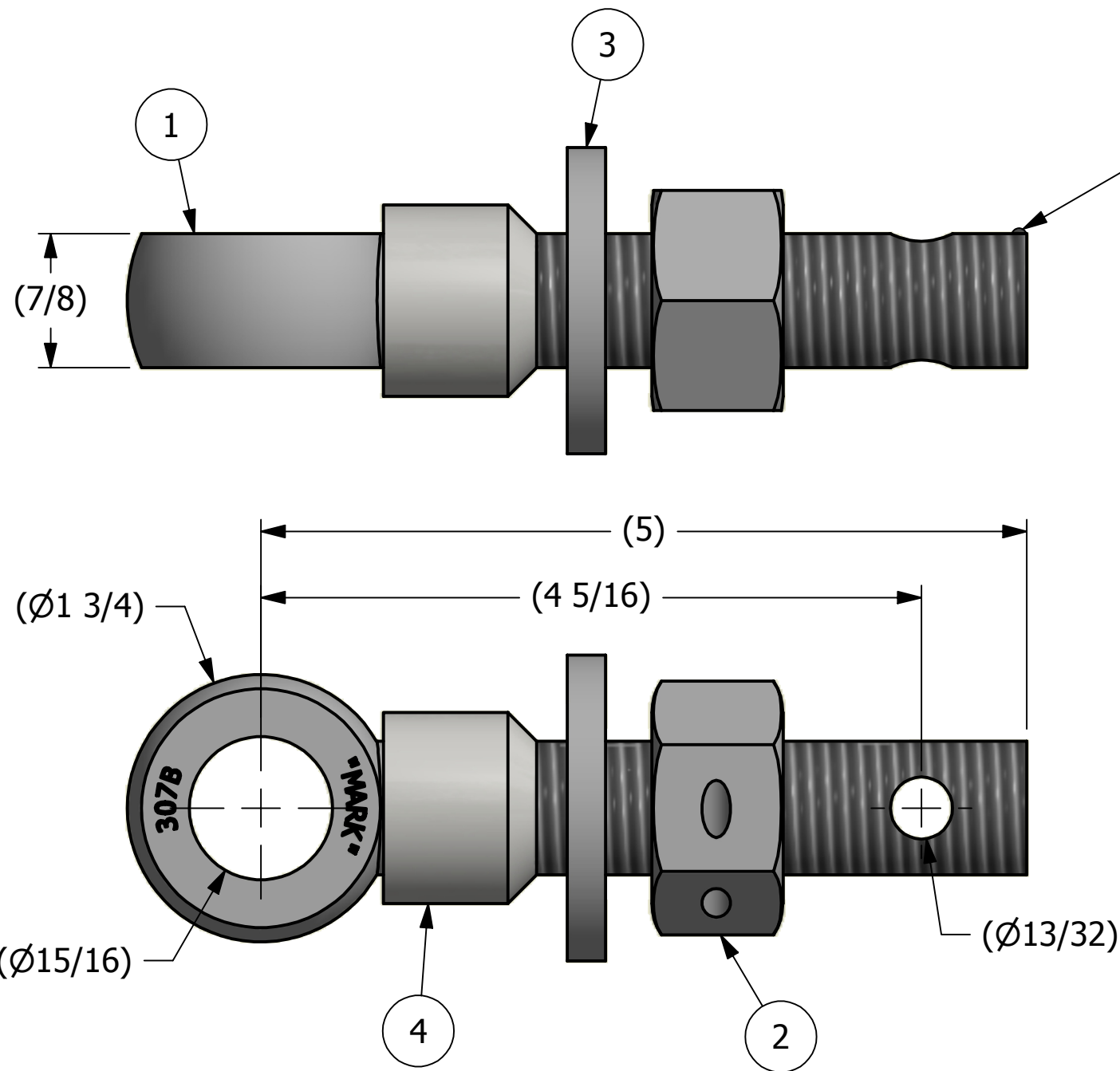
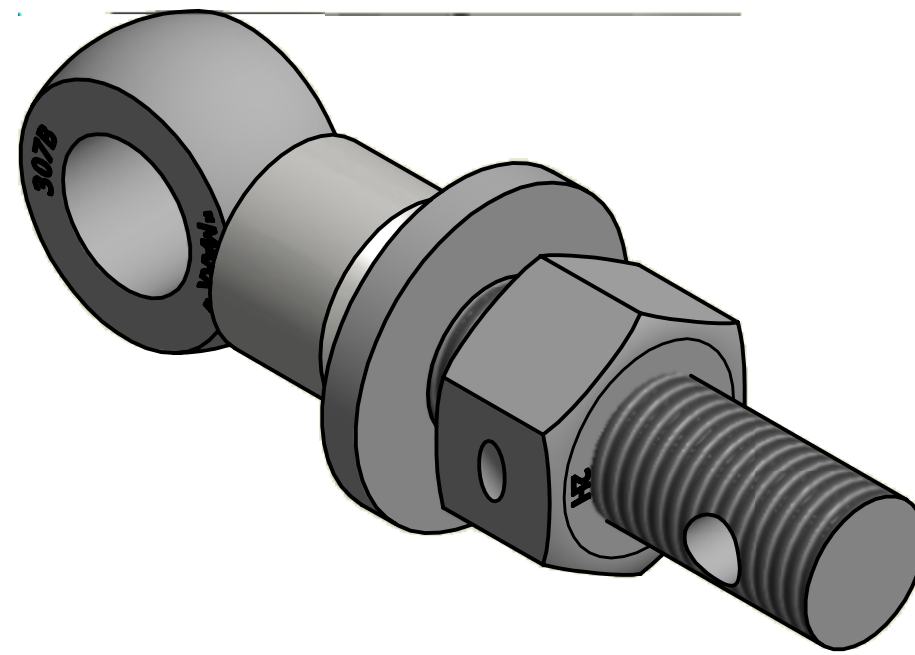


NO.	PART NAME	PART#	REQ'D	MATERIAL
1	EYEBOLT 7/8"X5"	EBR785HFT	1	CARBON STEEL
2	HEAVY HEX NUT 7/8"-9	N78XH	1	CARBON STEEL
3	FLAT WASHER 7/8"	WASH78T	1	CARBON STEEL
4	EYEBOLT SAFETY COLLAR 7/8"	COLLAR78S3T3	1	303 SS



APPLY A BEAD OF WELD TO THE TWO END THREADS AFTER INSTALLING WASHER AND NUT



A	TAK	12-4-13	RELEASED FOR PRODUCTION
REV	BY	DATE	DESCRIPTION

<small>UNLESS OTHERWISE SPECIFIED DIMENSIONAL TOLERANCES</small> FRACTIONAL: ±1/16 X.XX: ±.03 X.XXX: ±.015 ANGULAR: ±1° <small>DEBURR ALL SHARP EDGES. ALL MACHINED SURFACES TO HAVE A 125 RMS FINISH UNLESS NOTED OTHERWISE.</small> <small>THIRD ANGLE PROJECTION</small>	DRAWN BY:	JJK
	CHECKED BY:	CHL
	PROTOTYPE BY:	JJK
	PROTOTYPE DATE:	11/5/2013
	APPROVED FOR PRODUCTION BY:	CHL
	PRODUCTION DATE:	12/4/2013

**SALCO PRODUCTS, INC.**

PART NAME: EYEBOLT ASSEMBLY 7/8"X5"

MATERIAL: SEE BOM

PROJECT #: 130923FR2    SHEET #: 1 OF 1    SCALE: 1:1

DRAWING #: **B37655**    PART #: **EB785XHHFTATC3**

THIS PRINT, PROPERTY OF SALCO PRODUCTS INC., CONTAINS PROPRIETARY INFORMATION AND MUST NOT BE COPIED, REPRODUCED, OR USED DETRIMENTALLY TO OUR INTEREST.