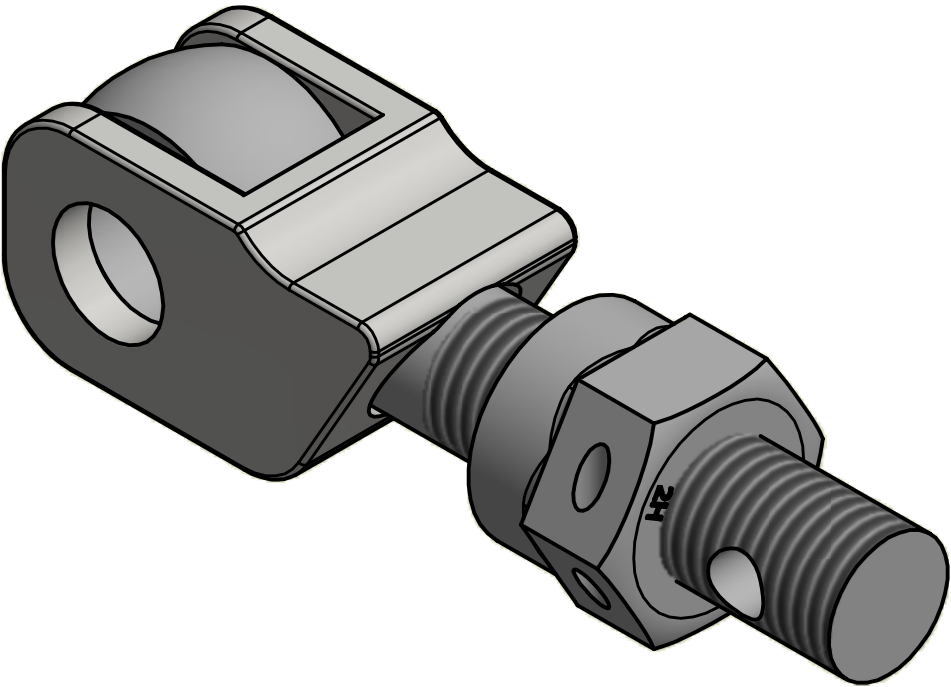
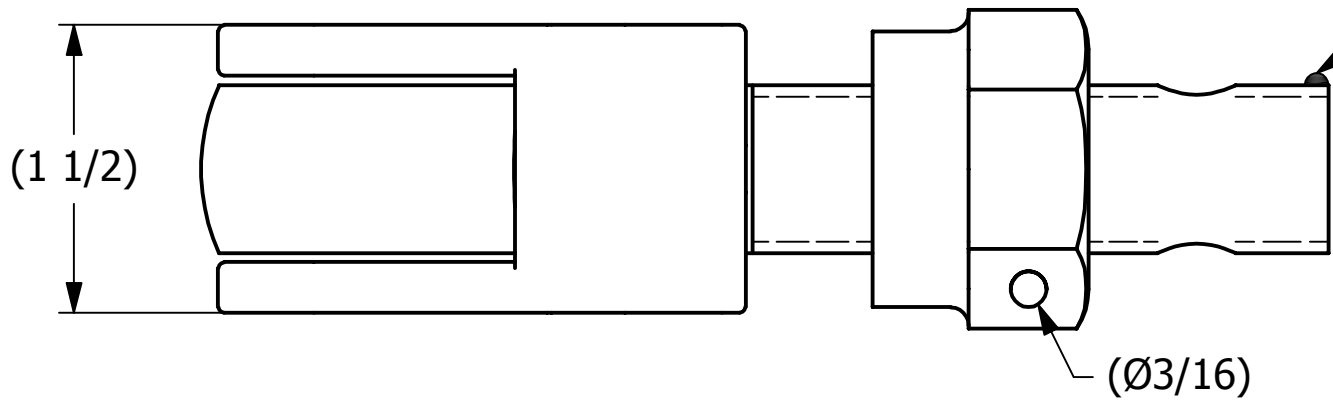
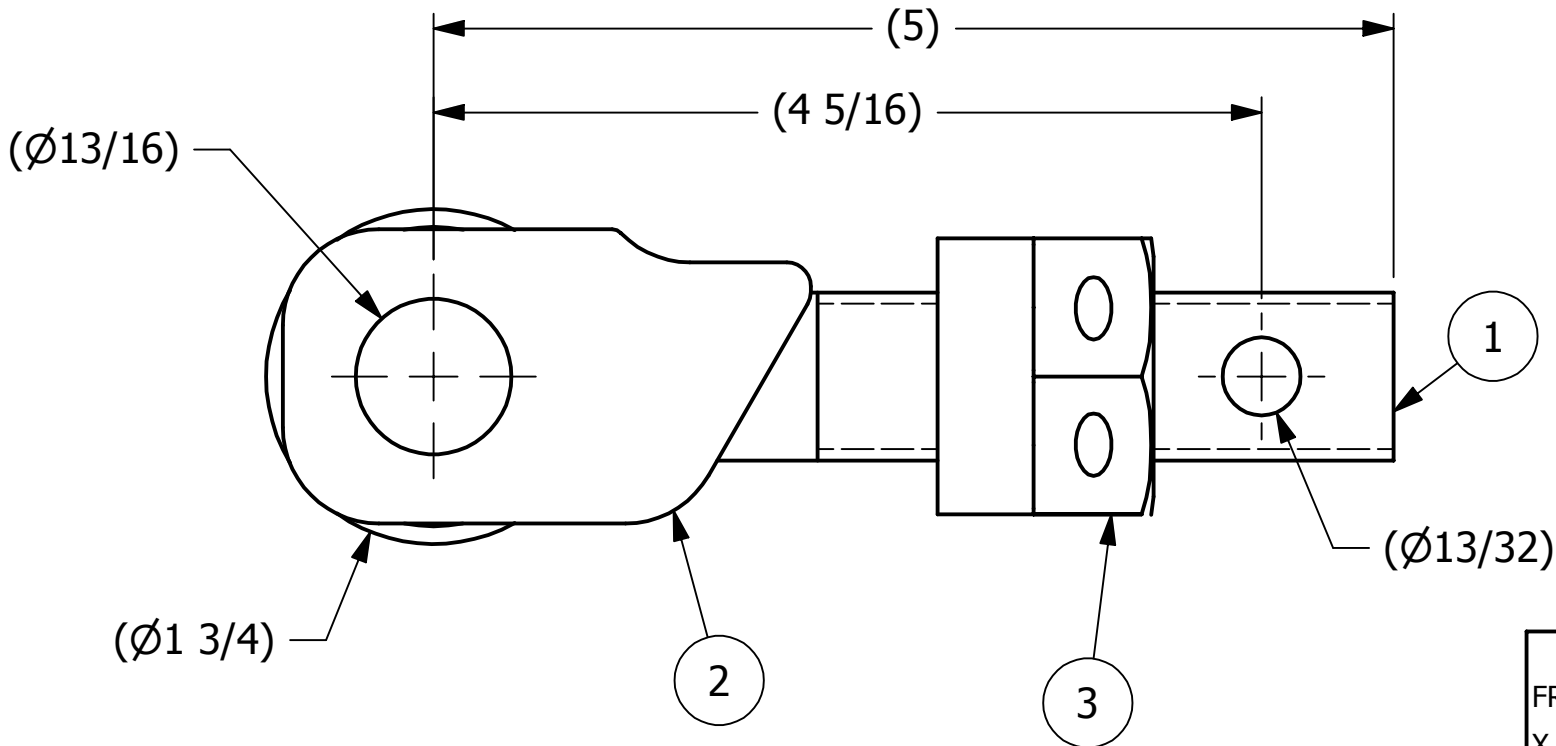


NO.	PART NAME	PART #	REQ'D	MATERIAL
1	EYEBOLT 7/8"X5"	EBR785H	1	CARBON STEEL
2	EYEBOLT SAFETY CATCH 7/8"	DEB275SC	1	316 SS
3	HEAVY HEX FERRULE NUT 7/8"-9	N78XSNH	1	CARBON STEEL



APPLY A BEAD OF WELD TO THE TWO END
THREADS AFTER INSTALLING SAFETY CATCH AND NUT.



ISOMETRIC VIEW



B	JJK	4-21-14	UPDATED EYEBOLT OD
A	CHL	1-15-04	REPLACED PF114S4 & SN78XHS6 W/ WELD STOP, PART# WAS EB785HHNSC
REV	BY	DATE	DESCRIPTION

UNLESS OTHERWISE SPECIFIED DIMENSIONAL TOLERANCES FRACTIONAL: $\pm 1/16$ X.XX: $\pm .03$ X.XXX: $\pm .015$ ANGULAR: $\pm 1^\circ$ DEBURR ALL SHARP EDGES. ALL MACHINED SURFACES TO HAVE A 125 RMS FINISH UNLESS NOTED OTHERWISE. THIRD ANGLE PROJECTION	DRAWN BY:	CHL	 SALCO PRODUCTS, INC.	
	CHECKED BY:	SAB		
	PROTOTYPE BY:	CHL	PART NAME: EYEBOLT ASSEMBLY 7/8"X5"	
	PROTOTYPE DATE:	3/9/2001	MATERIAL: SEE BOM	
	APPROVED FOR PRODUCTION BY:	SAB	PROJECT #: 001127	SHEET #: 1 OF 1
	PRODUCTION DATE:	3/9/2001	DRAWING #: B15542	PART #: EB785XSNHHASC

THIS PRINT, PROPERTY OF SALCO PRODUCTS INC., CONTAINS PROPRIETARY INFORMATION
AND MUST NOT BE COPIED, REPRODUCED, OR USED DETRIMENTALLY TO OUR INTEREST.