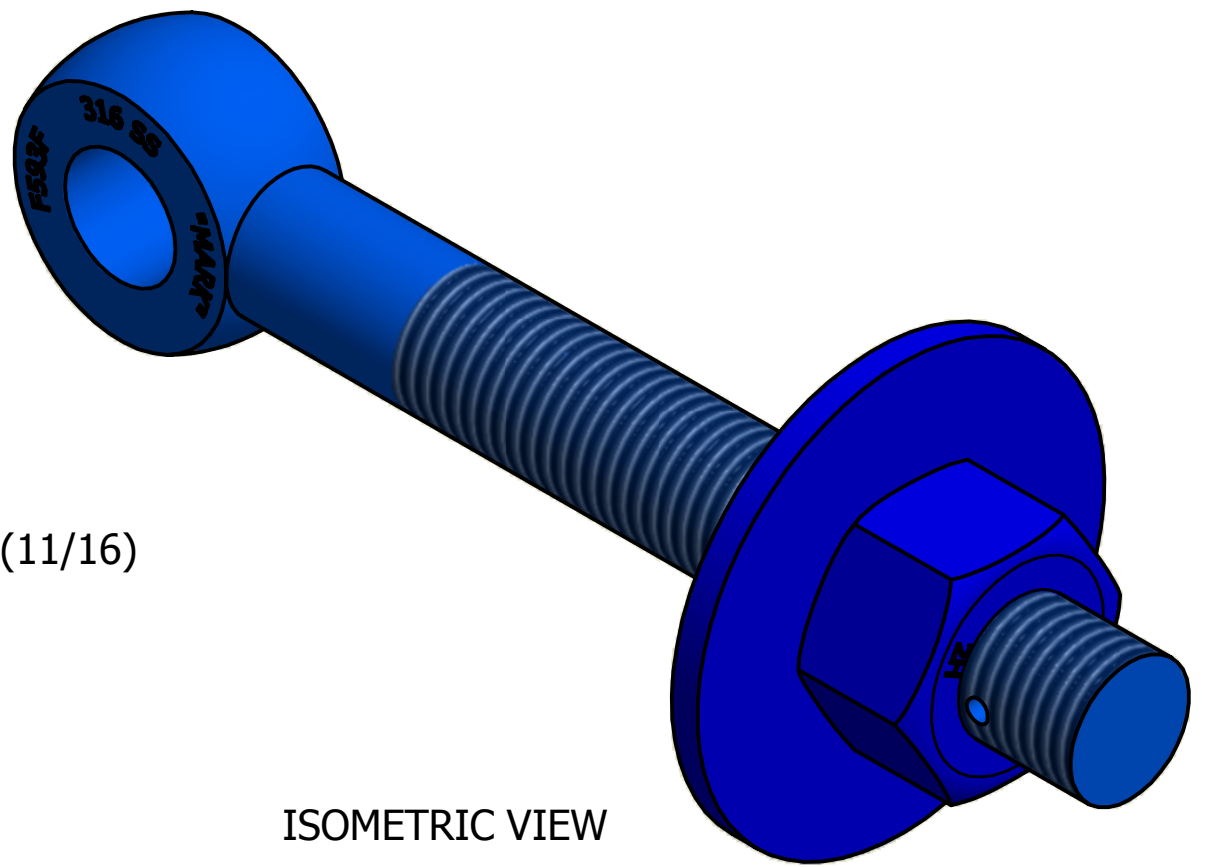
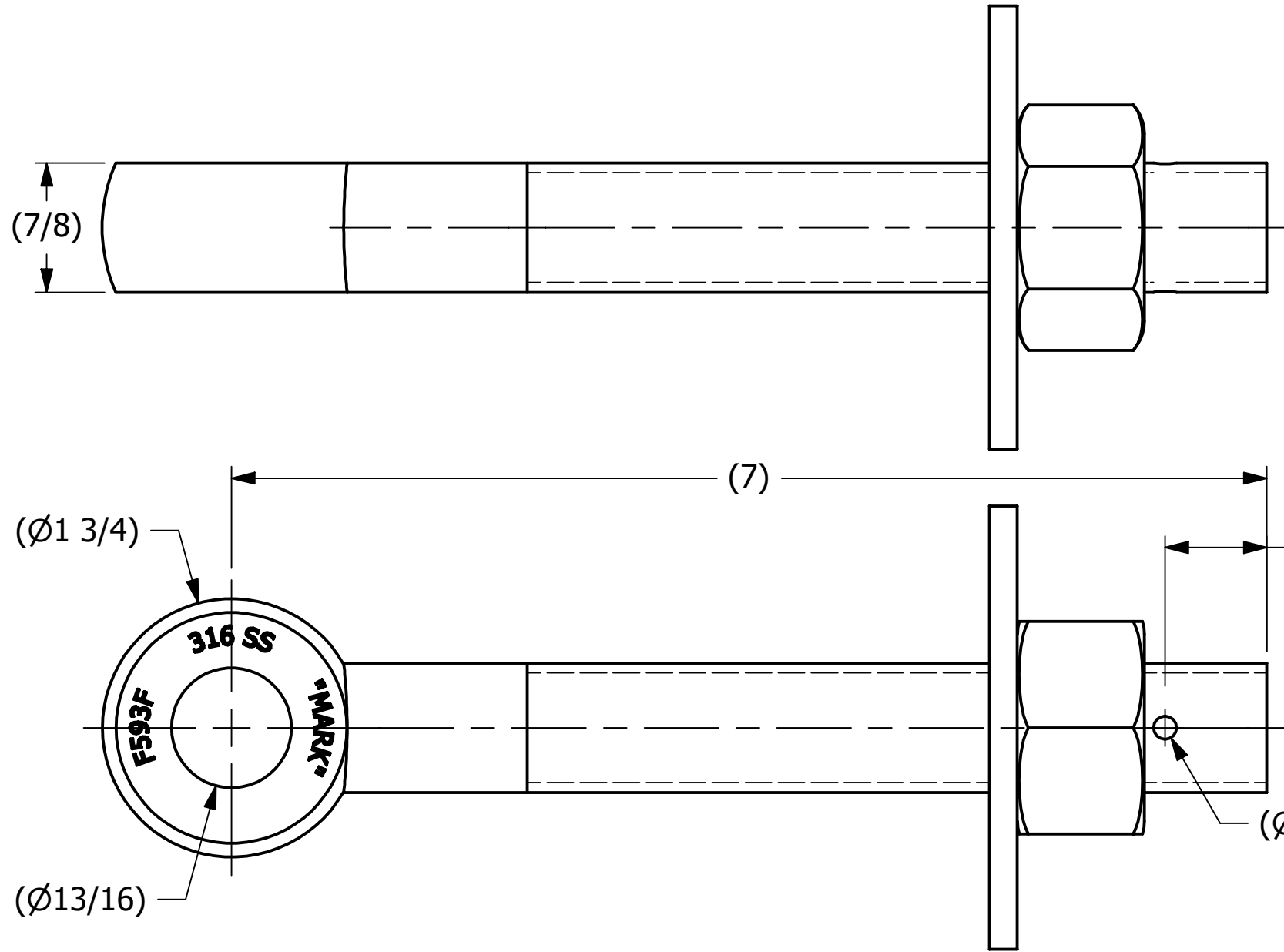


NO	PART NAME	PART#	REQ'D	MATERIAL
1	EYEBOLT 7/8"X7"	EBR787HS6T	1	316 SS/PTFE
2	HEAVY HEX NUT 7/8"-9	N78XT	1	CS/PTFE
3	FLAT WASHER 7/8"	WASH783G5T	1	MEDIUM CS/PTFE



NOTE:
PARTS TO BE PTFE COATED PRIOR TO ASSEMBLY.

REV	BY	DATE	DESCRIPTION
A	RJP	4-12-17	CHANGED 'TEFLON' TO 'PTFE'

UNLESS OTHERWISE SPECIFIED DIMENSIONAL TOLERANCES	DRAWN BY:	JJK
FRACTIONAL: ±1/16	CHECKED BY:	CHL
X.XX: ±.03	PROTOTYPE BY:	JJK
X.XXX: ±.015	PROTOTYPE DATE:	12/12/2013
ANGULAR: ±1°	APPROVED FOR PRODUCTION BY:	JJK
DEBURR ALL SHARP EDGES. ALL MACHINED SURFACES TO HAVE A 125 RMS FINISH UNLESS NOTED OTHERWISE.	PRODUCTION DATE:	12/18/2013
THIRD ANGLE PROJECTION		

SALCO PRODUCTS, INC.

PART NAME: EYEBOLT ASSEMBLY 7/8"X7"

MATERIAL: SEE BOM

PROJECT #: 131211FR1 SHEET #: 1 OF 1 SCALE: 1:1

DRAWING #: **B37957** PART #: **EB787XHAS6CNT**

THIS PRINT, PROPERTY OF SALCO PRODUCTS INC., CONTAINS PROPRIETARY INFORMATION AND MUST NOT BE COPIED, REPRODUCED, OR USED DETRIMENTALLY TO OUR INTEREST.