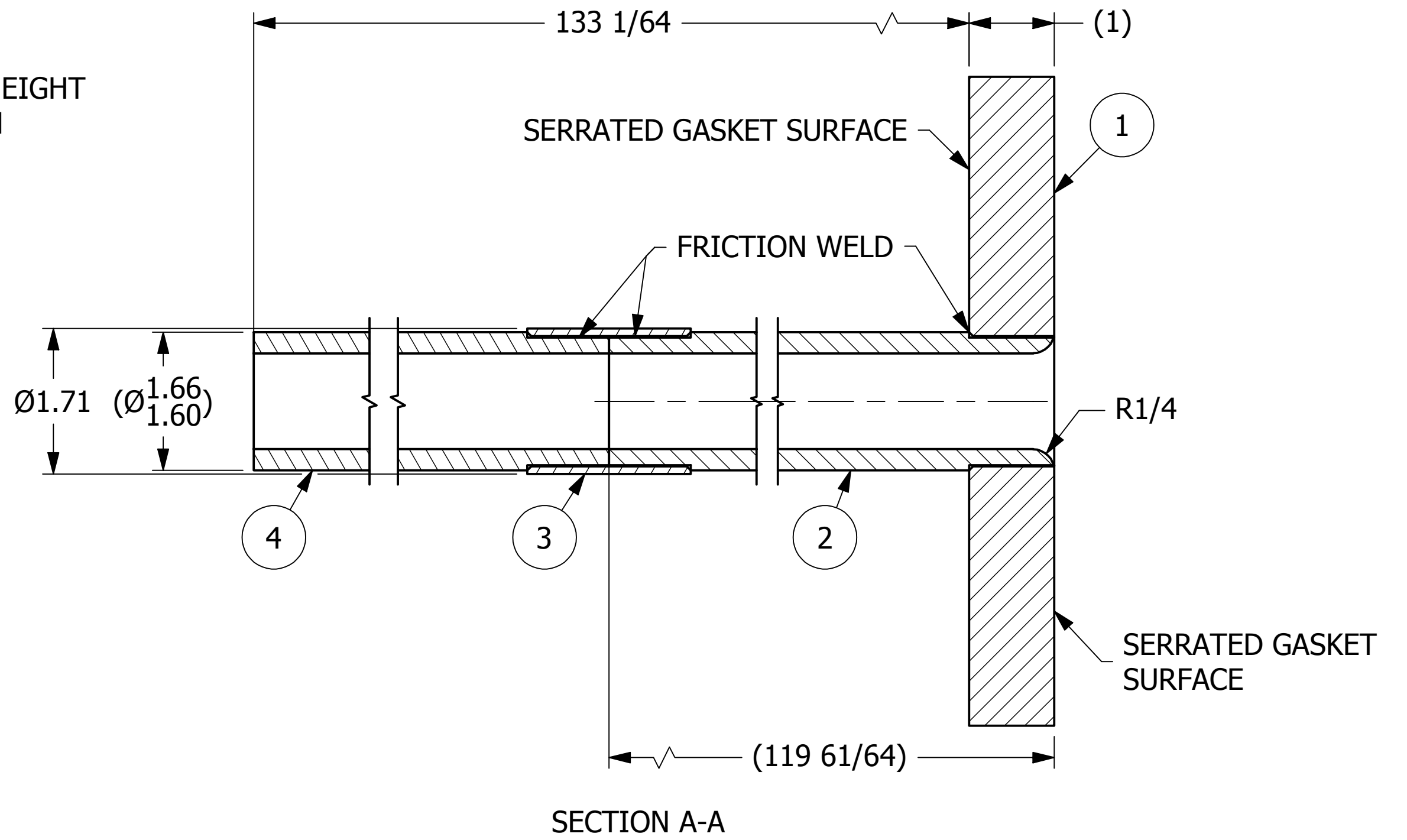
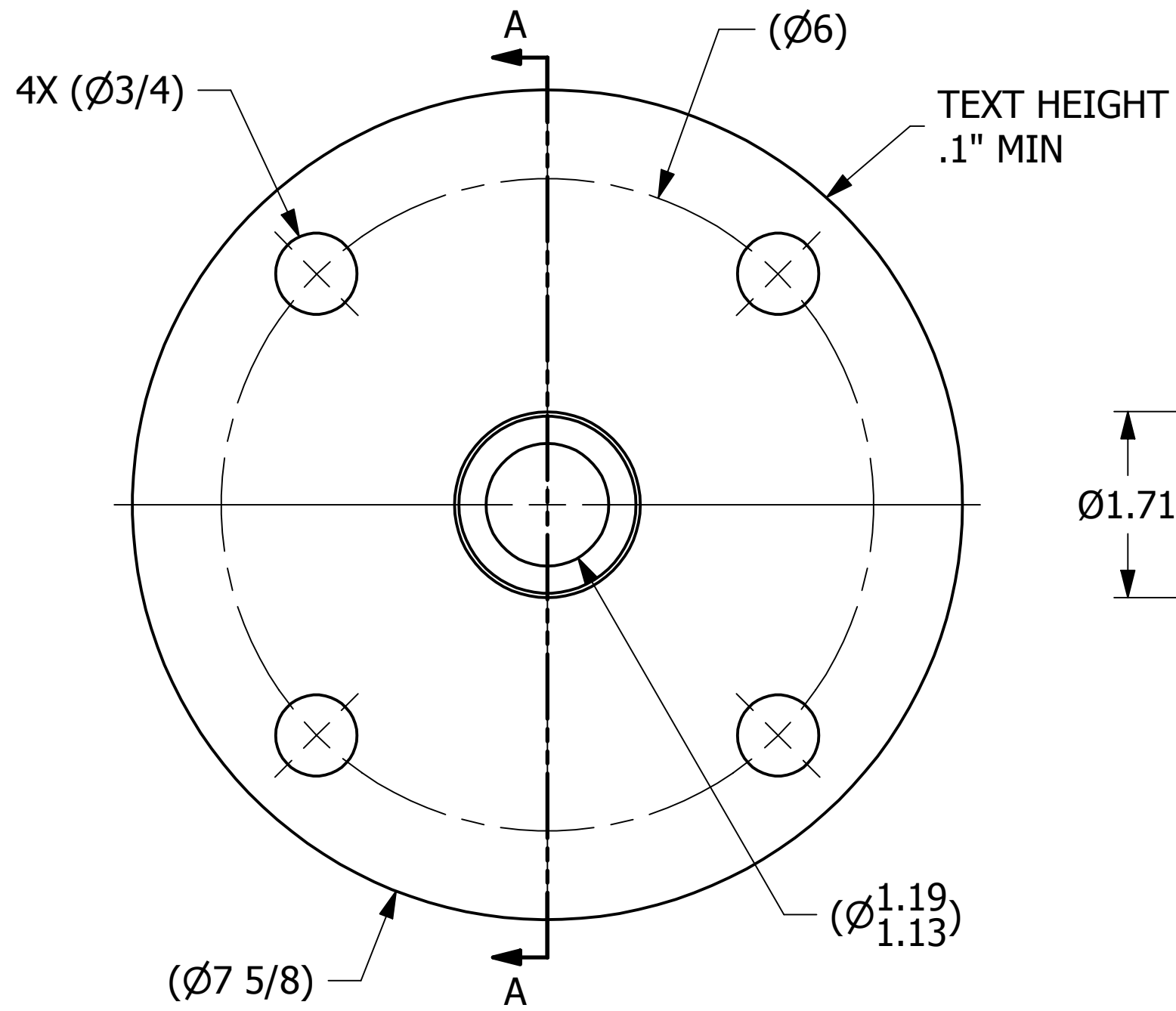


NO.	PART NAME	PART#	REQ'D	MATERIAL
1	FLANGE 3" 150 LB	HS3FLDGSH2	1	SALCO PE
2	TUBE 1 5/8"X1 1/8"	A35578	1	SALCO PE
3	COUPLING 1 1/2"	A35614	1	SALCO PE
4	TUBE 1 5/8"X1 1/8"	A35617	1	SALCO PE



- NOTES:
1. BORE Ø1.500 HOLE IN FLANGE BEFORE WELDING
 2. SEE QAP5A-1 FOR MARKING PROCEDURES.

A	JJK	11-7-14	RELEASED FOR PRODUCTION
REV	BY	DATE	DESCRIPTION

<small>UNLESS OTHERWISE SPECIFIED DIMENSIONAL TOLERANCES FRACTIONAL: ±1/16 X.XX: ±.03 X.XXX: ±.015 ANGLE: ±1° DEBURR ALL SHARP EDGES. ALL MACHINED SURFACES TO HAVE A 125 RMS FINISH UNLESS NOTED OTHERWISE.</small>	DRAWN BY:	GDS
	CHECKED BY:	WRB
	PROTOTYPE BY:	GDS
	PROTOTYPE DATE:	3/6/2013
	APPROVED FOR PRODUCTION BY:	CHL
	PRODUCTION DATE:	11/7/2014

SALCO PRODUCTS, INC.

PART NAME: **EDUCATION TUBE 3" X 1 5/8"**

MATERIAL: **SEE BOM**

PROJECT #: **130306FR2** SHEET #: **1 OF 1** SCALE: **3:4**

DRAWING #: **C35579** PART #: **HS3DT118158113**