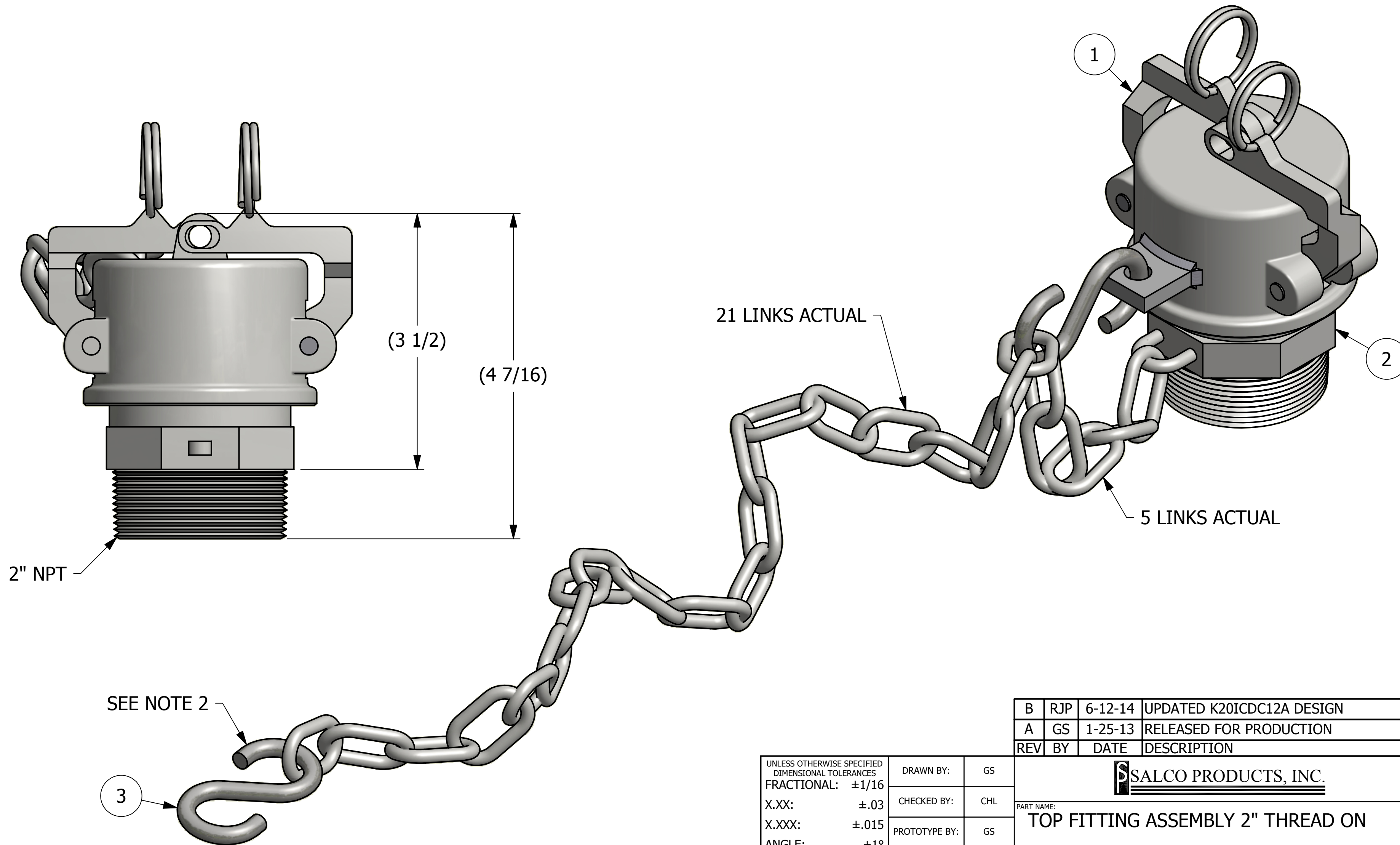


NO.	PART NAME	PART#	REQ'D	MATERIAL
1	DUST CAP ASSEMBLY 2"	K20ICDC12A	1	SEE DWG
2	QUICK CONNECT ADAPTER 2" THREAD ON	K2IMPA	1	DI
3	S-HOOK 1/4"	SC25SH	1	CS Z/P

NOTES:

- GASKET IS VITON GF-600S.
- SHIP S-HOOK LOOSE.



REV	BY	DATE	DESCRIPTION
B	RJP	6-12-14	UPDATED K20ICDC12A DESIGN
A	GS	1-25-13	RELEASED FOR PRODUCTION

<small>UNLESS OTHERWISE SPECIFIED DIMENSIONAL TOLERANCES FRACTIONAL: ±1/16 X.XX: ±.03 X.XXX: ±.015 ANGLE: ±1° DEBURR ALL SHARP EDGES. ALL MACHINED SURFACES TO HAVE A 125 RMS FINISH UNLESS NOTED OTHERWISE.</small>	DRAWN BY:	GS
	CHECKED BY:	CHL
	PROTOTYPE BY:	GS
	PROTOTYPE DATE:	1/17/2013
	APPROVED FOR PRODUCTION BY:	GS
	PRODUCTION DATE:	1/25/2013

SALCO PRODUCTS, INC.		
PART NAME: TOP FITTING ASSEMBLY 2" THREAD ON		
MATERIAL: SEE BOM/NOTE		
PROJECT #:	SHEET #:	SCALE:
120905FR	1 OF 1	1:1
DRAWING #:	PART #:	
C34147	K20ICUMP12A	