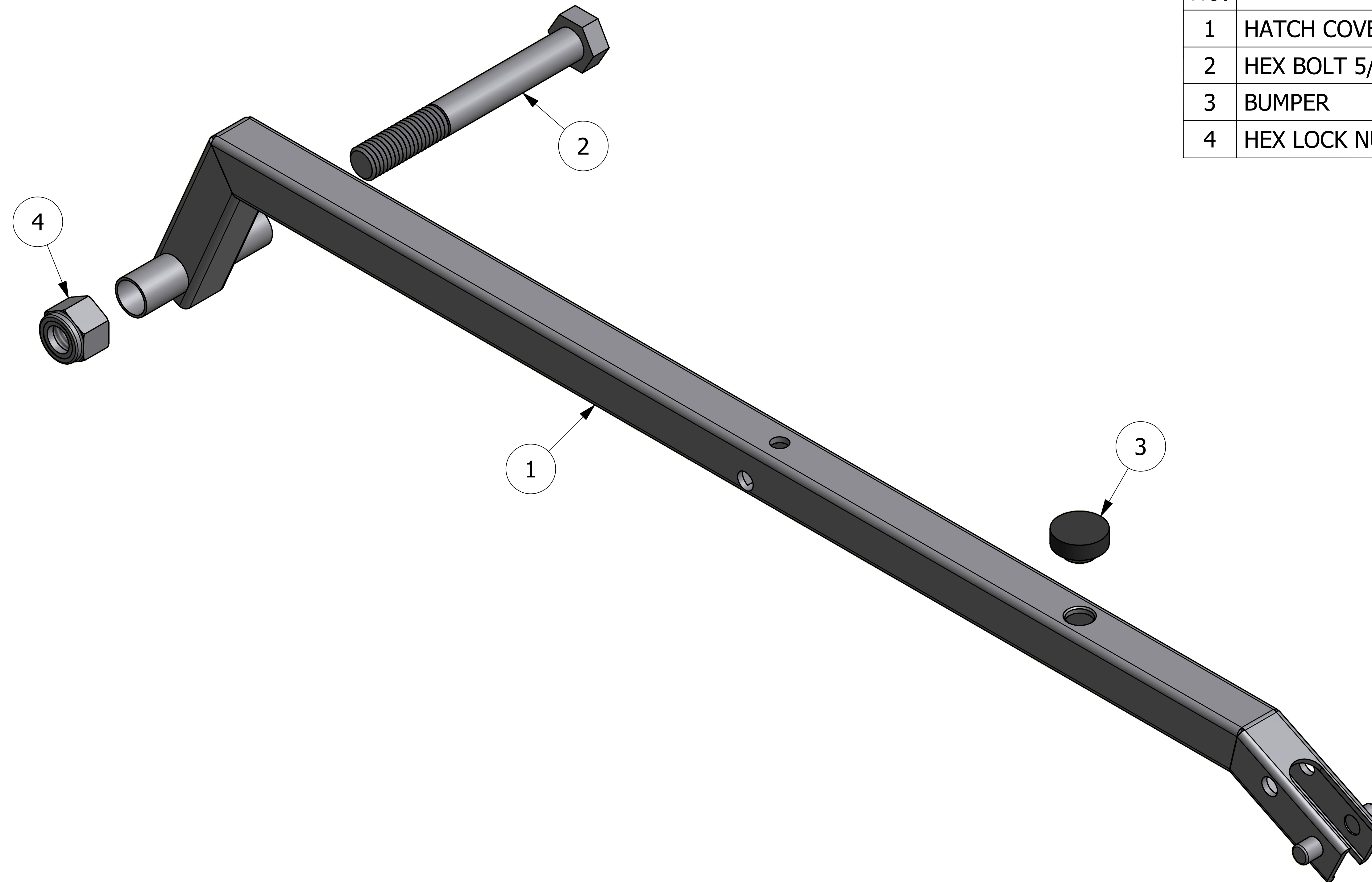


NO.	PART NAME	PART #	REQ'D	MATERIAL
1	HATCH COVER ARM	P20SAS2B	1	304 SS
2	HEX BOLT 5/8"-11X5"	HB585S	1	18-8 SS
3	BUMPER	VAB	1	EPDM
4	HEX LOCK NUT 5/8"-11	BVG71	1	18-8 SS



A	JG	4-9-15	RELEASED FOR PRODUCTION
REV	BY	DATE	DESCRIPTION

UNLESS OTHERWISE SPECIFIED DIMENSIONAL TOLERANCES FRACTIONAL: ±1/16 X.XX: ±.03 X.XXX: ±.015 ANGULAR: ±1° DEBURR ALL SHARP EDGES. ALL MACHINED SURFACES TO HAVE A 125 RMS FINISH UNLESS NOTED OTHERWISE. THIRD ANGLE PROJECTION	DRAWN BY:	CHL
	CHECKED BY:	PJG
	PROTOTYPE BY:	CHL
	PROTOTYPE DATE:	2/2/2004
	APPROVED FOR PRODUCTION BY:	JG
	PRODUCTION DATE:	4/9/2015

<b>SALCO PRODUCTS, INC.</b>		
PART NAME: <b>HATCH COVER ARM ASSEMBLY 20"</b>		
MATERIAL: <b>SEE BOM</b>		
PROJECT #: <b>WAG0095</b>	SHEET #: <b>1 OF 1</b>	SCALE: <b>1:1</b>
DRAWING #: <b>D18808</b>	PART #: <b>P20SCAB</b>	

THIS PRINT, PROPERTY OF SALCO PRODUCTS INC. CONTAINS PROPRIETARY INFORMATION AND MUST NOT BE COPIED, REPRODUCED, OR USED DETRIMENTALLY TO OUR INTEREST.