

## APPLICATION FOR RENEWAL OF APPROVAL FOR PRESSURE RELIEF DEVICES, VALVES, CLOSURES, AND FITTINGS

1. AAR APPROVAL No. E202146
2. Date of Application 10/01/2019
3. Previous AAR Approval E-099035
4. Applicant: Salco Products Inc.
5. Address: 1385 101st Street, Suite A, Lemont IL 60439
6. Drawing No. E13035      7. Latest rev. 2      8. Date of latest rev. 7/8/09
9. Description of device: Magnetic Gauge Device      10. Device ID No. MGD1000

**CERTIFICATION:** The subject device is **unchanged** from the previous approval, and conforms with the latest revision of AAR Specifications for Tank Cars, Appendix A. The device conforms with drawing listed above.

11. By: \_\_\_\_\_ Title: \_\_\_\_\_

If device is **changed** since latest approval, fill in the following blanks

12. Reference Previous Drawing	New Drawing	If on Service Trial
No. _____ Rev. ___ Date _____	No. _____ Rev. ___ Date _____	S.T. No. _____
No. _____ Rev. ___ Date _____	No. _____ Rev. ___ Date _____	S.T. No. _____
No. _____ Rev. ___ Date _____	No. _____ Rev. ___ Date _____	S.T. No. _____

13. New drawing supersedes previous one  or does not obsolete it

CHANGES

REASONS FOR CHANGES

- |   |   |
|---|---|
| <p>14. a. _____</p> <p>b. _____</p> <p>c. _____</p> <p>d. _____</p> <p style="text-align: center;">(if needed use supplemental sheet)</p> | <p>a. _____</p> <p>b. _____</p> <p>c. _____</p> <p>d. _____</p> |
|---|---|

15. Normal operational effect of changes of device: \_\_\_\_\_

\_\_\_\_\_

16. Drawing submitted with this application: \_\_\_\_\_

**CERTIFICATION:** The above data is correct and conforms with AAR Specifications for Tank Cars, Appendix A. The device conforms with drawing listed above.

17. By: \_\_\_\_\_ Title: \_\_\_\_\_

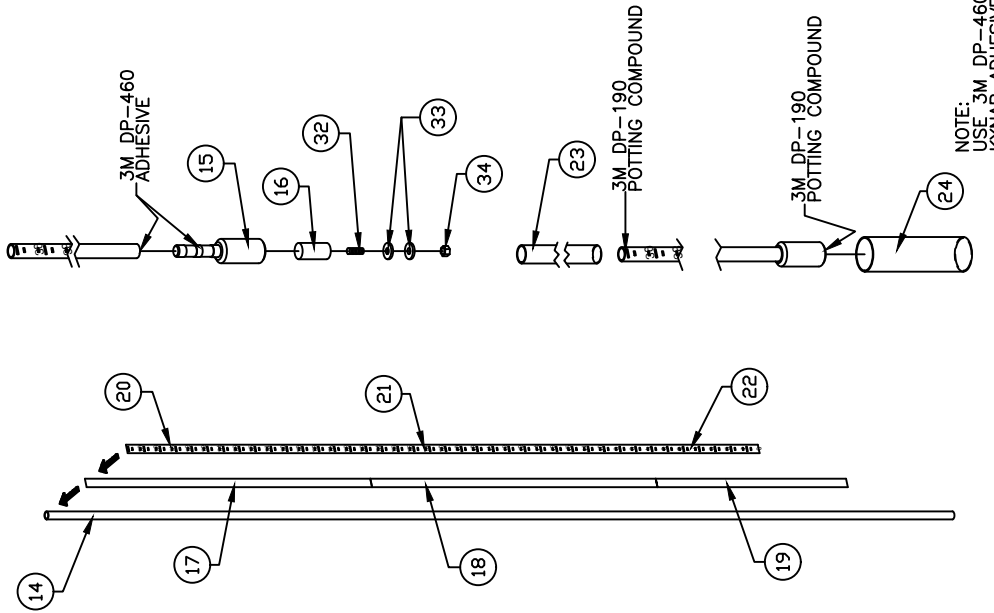
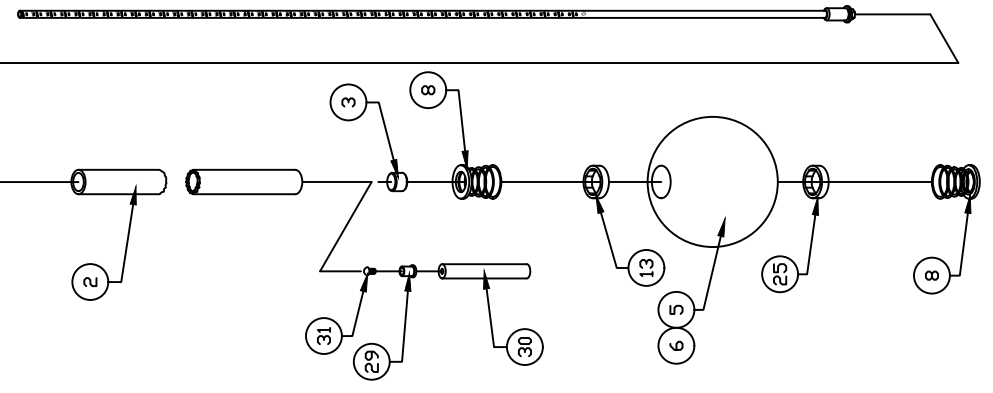
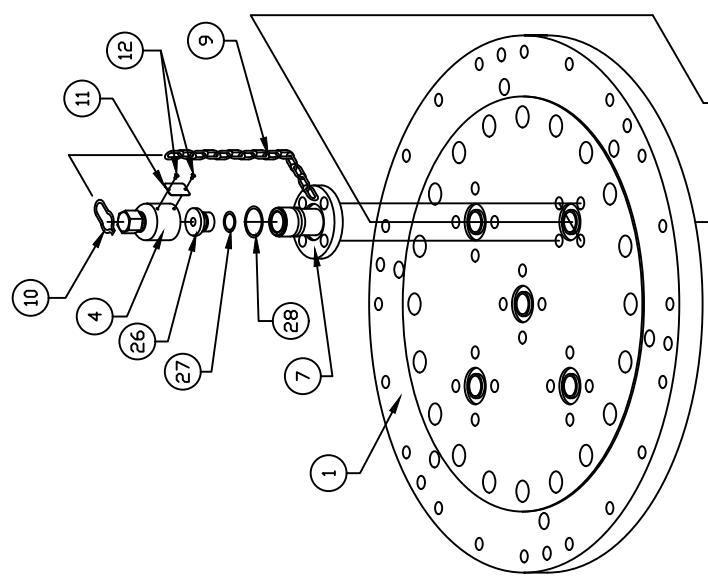
APPROVAL AAR Tank Car Committee:

*Kenneth B Dorsey*

Date Approved: 8/14/2020 \_\_\_\_\_

(Signature) on behalf of Committee

NO.	PART NAME	REQ'D	MATERIAL
1	FLANGE	1	304 S.S. PROUDC
2	EXTERNAL MAIN TUBE	1	304/304L S.S.
3	MAIN TUBE PIPE PLUG	1	303 S.S.
4	CAP	1	303 S.S. DR 1018
5	FLOAT	1	316 & 304 S.S.
6	FLOAT MAGNET	1	CERAMIC-5
7	MAIN BODY	1	303 S.S. DR 1018
8	SHAFT COLLAR	2	303 S.S.
9	CHAIN	1	S.S. DR C.S.
10	PIVOT RING	1	HR 1020
11	I.D. TAG	1	ANODIZED PHOTO PLATE
12	I.D. TAG DRIVE SCREW	2	18-8 S.S.
13	TOP FLOAT BUSHING (RED)	1	TEFLON
14	INTERNAL MAIN TUBE	1	6061-T6 DRAWN ALUM.
15	MAGNET HOUSING	1	6061-T6S11 ALUM.
16	INTERNAL STICK MAGNET	1	4041 MATL.
17	COLORLED REFLECTIVE SHEETING (GREEN)	1	3M 680
18	COLORLED REFLECTIVE SHEETING (YELLOW)	1	3M 680
19	COLORLED REFLECTIVE SHEETING (RED)	1	3M 680
20	COLORLED REFLECTIVE SHEETING (RED)	1	3M ELEC. SPEC. # 5 TAPE
21	INCREMENTAL MARKING TAPE (26" TO 14")	1	3M ELEC. SPEC. # 5 TAPE
22	INCREMENTAL MARKING TAPE (13" TO 0")	1	3M ELEC. SPEC. # 5 TAPE
23	KYNAR SHRINK TUBE	1	KYNAR
24	KYNAR SHRINK TUBE	1	KYNAR
25	BTM. FLOAT BUSHING (WHITE)	1	TEFLON
26	BUSHING	1	TEFLON
27	BUSHING O-RING	1	VITON
28	MAIN BODY O-RING	1	VITON
29	ELASTOMERIC BUMPER	1	ELASTOMER
30	MAIN TUBE BOTTOM SPACER	1	PVC
31	BUTTON HEAD CAP SCREW	1	18-8 S.S.
32	STUD	1	6061-T6 ALUM.
33	WASHER	2	TEFLON
34	HEX NUT	1	6061-T6 ALUM.



NOTE:  
USE 3M DP-460 AS  
KYNAR ADHESIVE.

2	CHL	7-8-09	REPLACED #8 & 9 WITH #8
1	KRSJ	8-20-99	ADDED PART NUMBER
REV	BY	DATE	DESCRIPTION

UNLESS OTHERWISE SPECIFIED DIMENSIONAL TOLERANCES			
FRACTIONAL	±1/16		
X.XX	±0.03		
X.XXX	±0.015		
ANGULAR	±1°		
THIS PRINT, PROPERTY OF SALCO PRODUCTS INC., CONTAINS PROPRIETARY INFORMATION AND MUST NOT BE COPIED, REPRODUCED, OR USED WITHOUT THE WRITTEN PERMISSION OF SALCO PRODUCTS INC.			
THIRD ANGLE PROJECTION			

**SALCO PRODUCTS**

DRAWN BY: KRSJ    CHKD BY: SAB    SCALE: 1/3:1    APPROVAL DATE:

MATERIAL: SEE B.O.M.

PART NAME: MAGNETIC GAUGING DEVICE ASSEMBLY

PROJECT # 980808    PROTOTYPE AND DATE: KRSJ 12-11-98    APPROVED FOR PRODUCTION:

DRAWING # E13035    PART # MGD1000