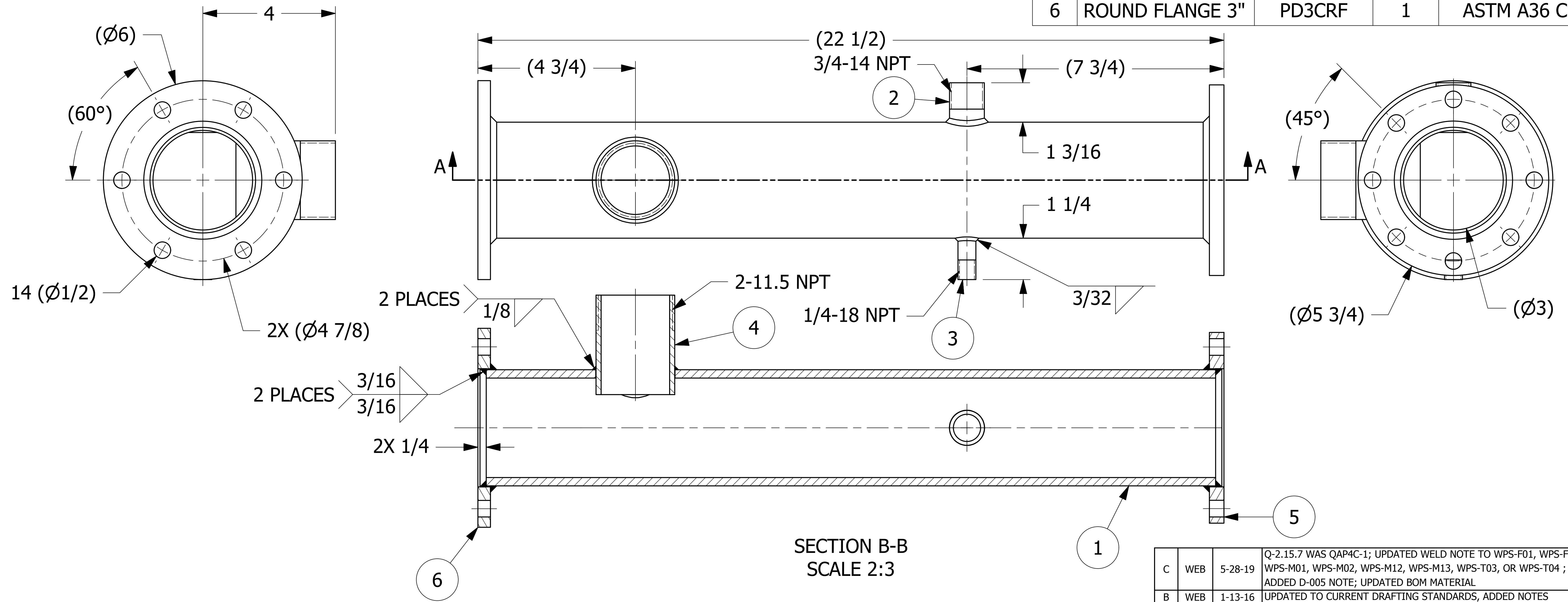


NO.	PART NAME	PART#	REQ'D	MATERIAL
1	PIPE 3"	C19284	1	ASTM A53 CS
2	PIPE NIPPLE 3/4"	A19286	1	ASTM A53 CS
3	PIPE NIPPLE 1/4"	A19287	1	ASTM A53 CS
4	PIPE NIPPLE 2"	A19288	1	ASTM A53 CS
5	ROUND FLANGE 3"	PD3CRF02	1	ASTM A36 CS
6	ROUND FLANGE 3"	PD3CRF	1	ASTM A36 CS



SECTION B-B
SCALE 2:3

- NOTES:
- SEE DOCUMENT WPS-F01, WPS-F02, WPS-M01, WPS-M02, WPS-M12, WPS-M13, WPS-T03, OR WPS-T04 FOR WELDING PROCEDURES.
 - WELD ACCEPTANCE CRITERIA TO MEET DOCUMENT D-005.
 - TEST PER Q-2.15.7.

REV	BY	DATE	DESCRIPTION
C	WEB	5-28-19	Q-2.15.7 WAS QAP4C-1; UPDATED WELD NOTE TO WPS-F01, WPS-F02, WPS-M01, WPS-M02, WPS-M12, WPS-M13, WPS-T03, OR WPS-T04 ; ADDED D-005 NOTE; UPDATED BOM MATERIAL
B	WEB	1-13-16	UPDATED TO CURRENT DRAFTING STANDARDS, ADDED NOTES
A	ACC	6-29-04	ADDED PART INTO THE SYSTEM

UNLESS OTHERWISE SPECIFIED DIMENSIONAL TOLERANCES	DRAWN BY:	ACC
FRACTIONAL: ±1/16	CHECKED BY:	KRSJ
X.XX: ±.03	PROTOTYPE BY:	ACC
X.XXX: ±.015	PROTOTYPE DATE:	6/29/2004
ANGULAR: ±1°	APPROVED FOR PRODUCTION BY:	ACC
DEBURR ALL SHARP EDGES. ALL MACHINED SURFACES TO HAVE A 125 RMS FINISH UNLESS NOTED OTHERWISE.	PRODUCTION DATE:	6/29/2004
THIRD ANGLE PROJECTION		

SALCO PRODUCTS, INC.

PART NAME:
BLOWDOWN PIPE 3"

MATERIAL:
SEE BOM

PROJECT #: **WAG0147** SHEET #: **1 OF 1** SCALE: **1:1**

DRAWING #: **D19291** PART #: **DF3A15A**