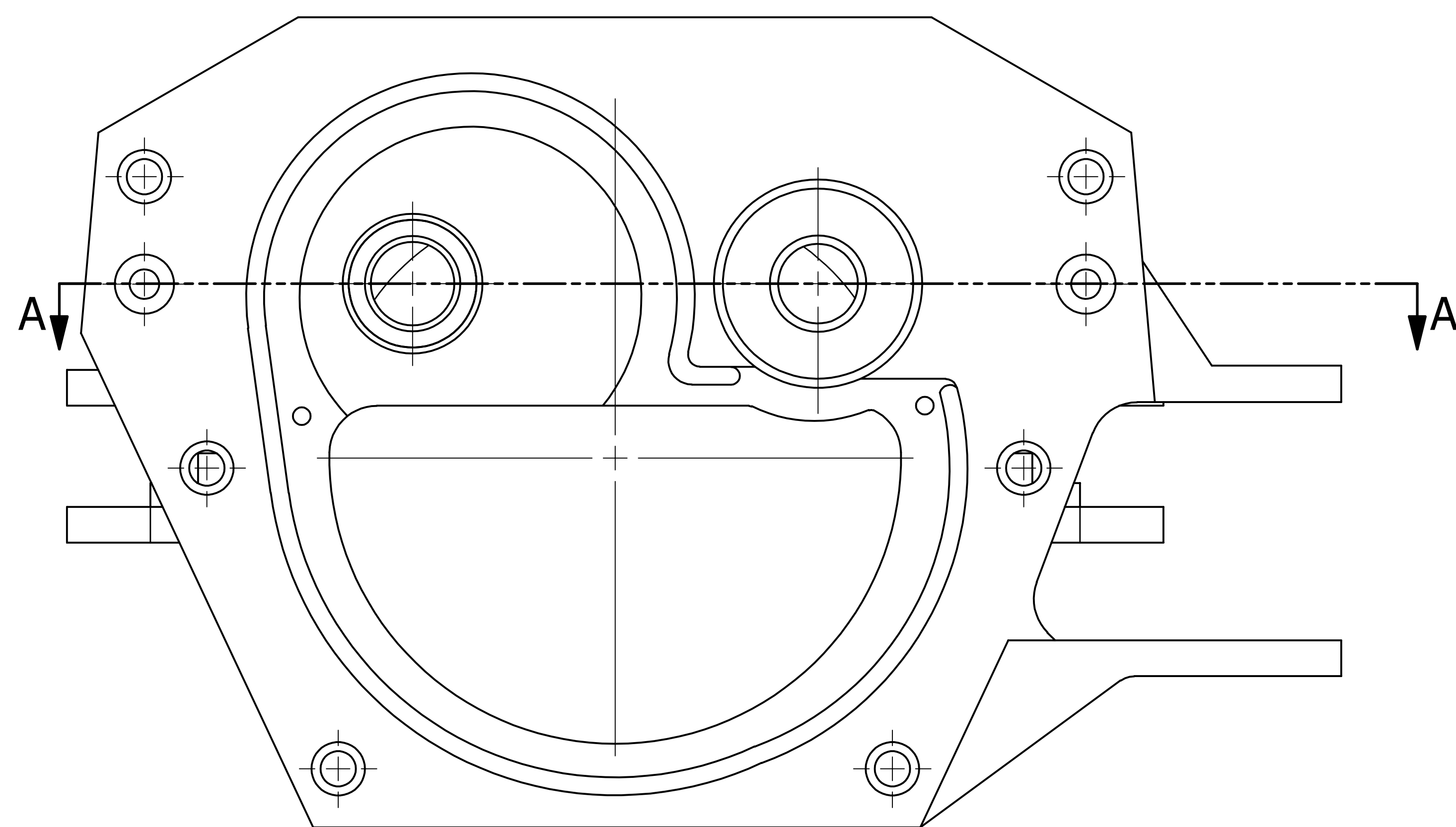
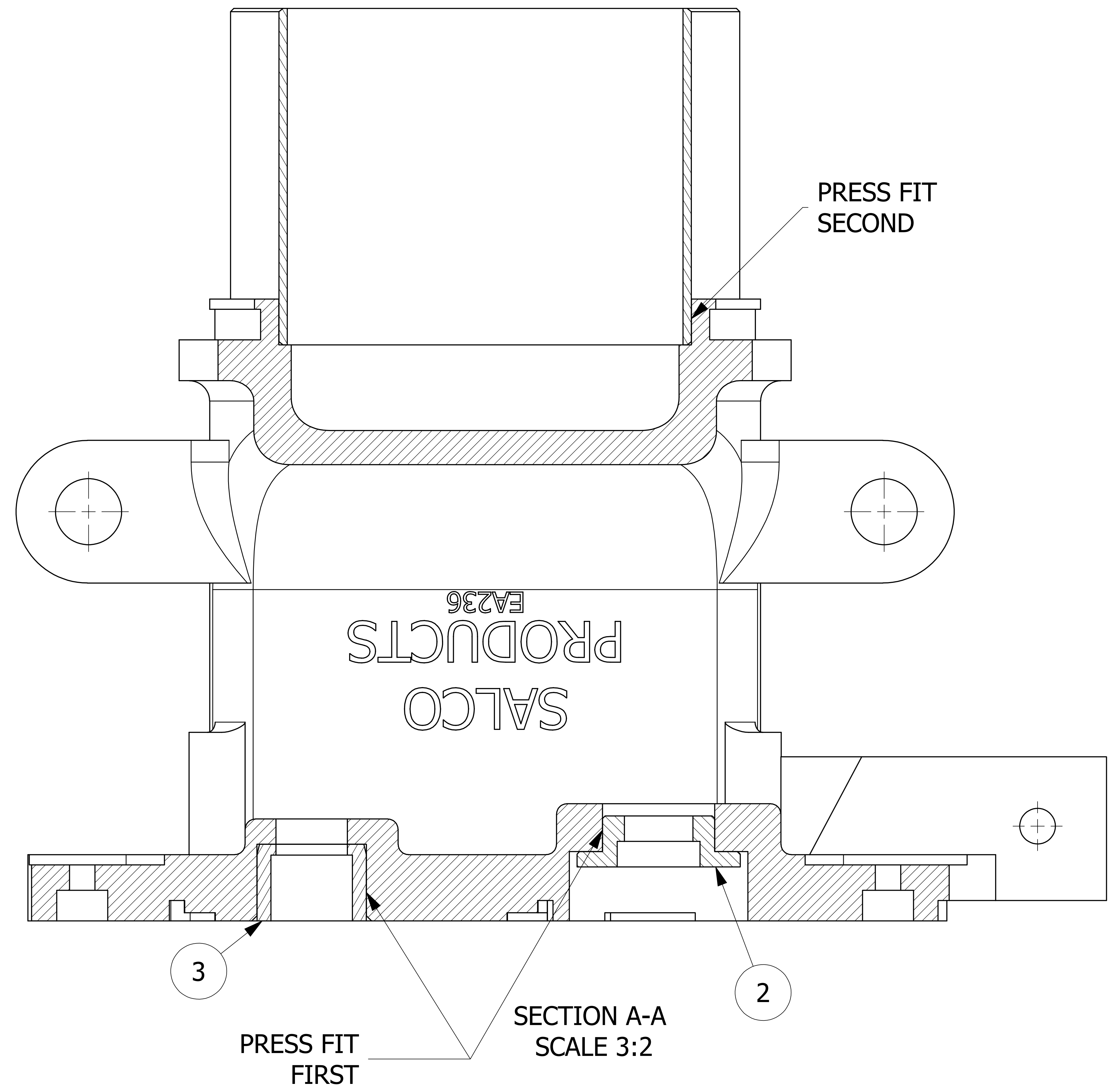
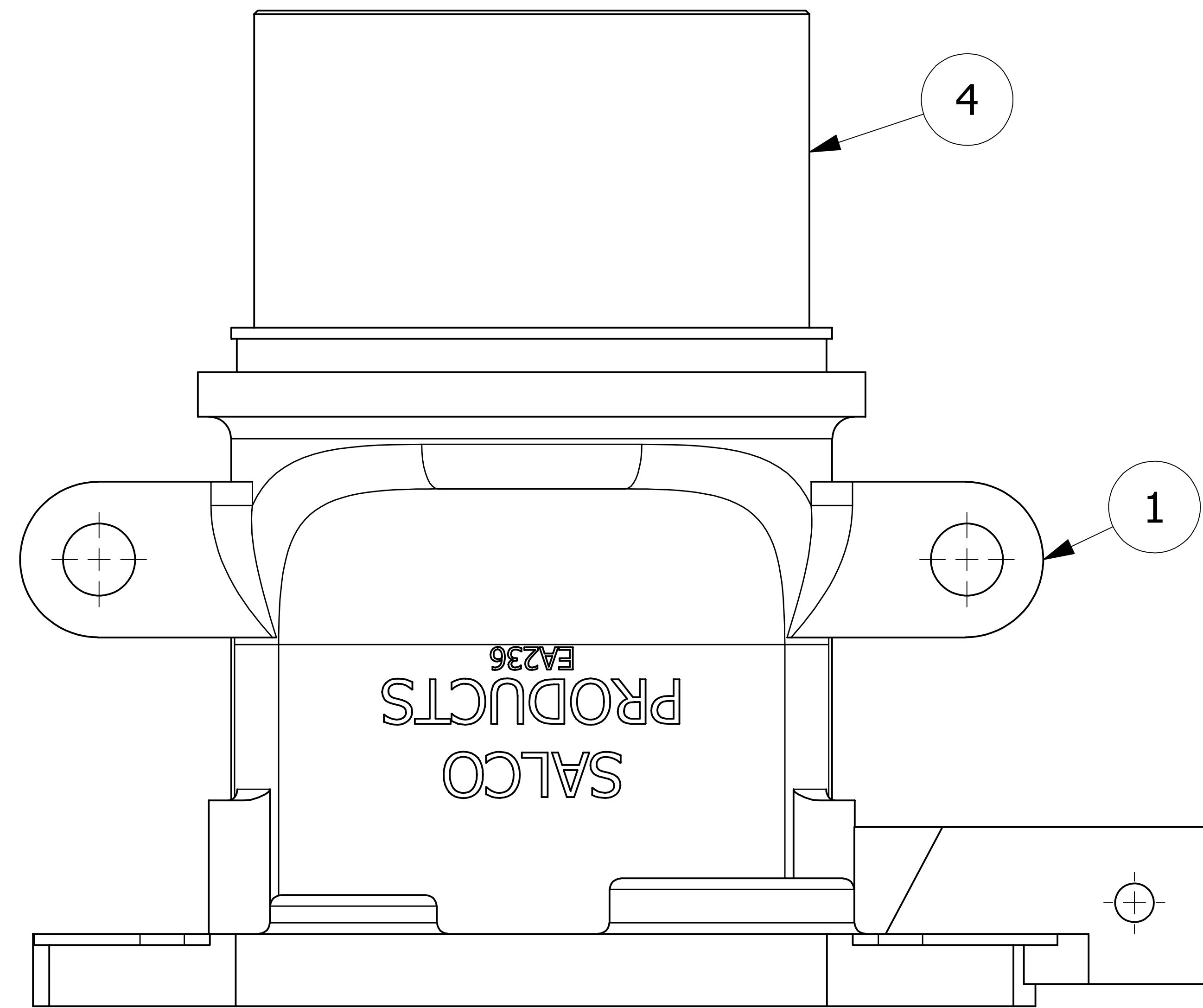


NO.	PART NAME	PART#	REQ'D	MATERIAL
1	END ADAPTER 5236	EA236	1	ALUMINUM
2	BUSHING 1 3/8" X 27/32"	A35600	1	ALUMINUM
3	BUSHING 1" X 11/32"	A35599	1	ALUMINUM
4	OUTLET NOZZLE	RPSN111A	1	ALUMINUM



A VD 01-16-14 RELEASED FOR PRODUCTION  
 REV BY DATE DESCRIPTION

UNLESS OTHERWISE SPECIFIED DIMENSIONAL TOLERANCES FRACTIONAL: $\pm 1/16$ X.XX: $\pm .03$ X.XXX: $\pm .015$ ANGULAR: $\pm 1^\circ$ DEBURR ALL SHARP EDGES. ALL MACHINED SURFACES TO HAVE A 125 RMS FINISH UNLESS NOTED OTHERWISE. THIRD ANGLE PROJECTION	DRAWN BY:	GS
	CHECKED BY:	CHL
	PROTOTYPE BY:	GS
	PROTOTYPE DATE:	3/8/2013
	APPROVED FOR PRODUCTION BY:	VD
	PRODUCTION DATE:	1/16/2014

**SALCO PRODUCTS, INC.**

PART NAME: **END ADAPTER ASSEMBLY**

MATERIAL: **SEE BOM**

PROJECT #: **110114** SHEET #: **1 OF 1** SCALE: **1:1**

DRAWING #: **E35627** PART #: **EA236A**