
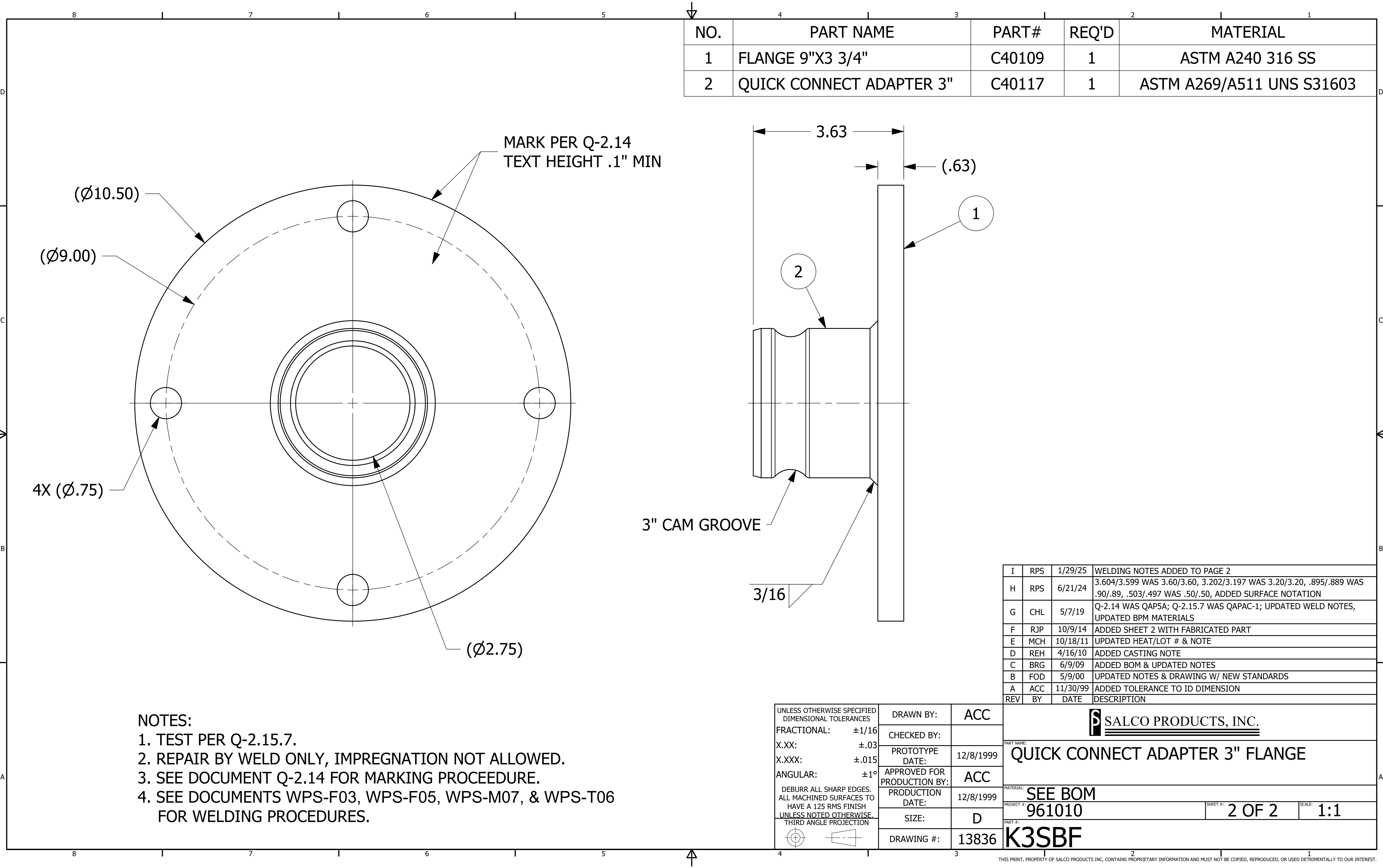


- NOTES:
- 1. TEST PER Q-2.15.7.
 - 2. REPAIR BY WELD ONLY, IMPREGNATION NOT ALLOWED.
 - 3. SEE DOCUMENT Q-2.14 FOR MARKING PROCEEDURE.

UNLESS OTHERWISE SPECIFIED DIMENSIONAL TOLERANCES FRACTIONAL: ±1/16 X.XX: ±.03 X.XXX: ±.015 ANGULAR: ±1° DEBURR ALL SHARP EDGES. ALL MACHINED SURFACES TO HAVE A 125 RMS FINISH UNLESS NOTED OTHERWISE. THIRD ANGLE PROJECTION	DRAWN BY:	ACC
	CHECKED BY:	
	PROTOTYPE DATE:	12/8/1999
	APPROVED FOR PRODUCTION BY:	ACC
	PRODUCTION DATE:	12/8/1999
	SIZE:	D
	DRAWING #:	13836

I	RPS	1/29/25	WELDING NOTES ADDED TO PAGE 2
REV	BY	DATE	DESCRIPTION
SEE FINAL SHEET FOR COMPLETE LIST OF DRAWING REVISIONS			
<div><div></div><div>SALCO PRODUCTS, INC.</div></div>			
PART NAME:			
QUICK CONNECT ADAPTER 3" FLANGE			
MATERIAL:			
SEE BOM			
PROJECT #		SHEET #:	SCALE:
961010		1 OF 2	1:1
PART #:			
K3SBF			




NO.	PART NAME	PART#	REQ'D	MATERIAL
1	FLANGE 9"X3 3/4"	C40109	1	ASTM A240 316 SS
2	QUICK CONNECT ADAPTER 3"	C40117	1	ASTM A269/A511 UNS S31603

I	RPS	1/29/25	WELDING NOTES ADDED TO PAGE 2
H	RPS	6/21/24	3.604/3.599 WAS 3.60/3.60, 3.202/3.197 WAS 3.20/3.20, .895/.889 WAS .90/.89, .503/.497 WAS .50/.50, ADDED SURFACE NOTATION
G	CHL	5/7/19	Q-2.14 WAS QAP5A; Q-2.15.7 WAS QAPAC-1; UPDATED WELD NOTES, UPDATED BPM MATERIALS
F	RJP	10/9/14	ADDED SHEET 2 WITH FABRICATED PART
E	MCH	10/18/11	UPDATED HEAT/LOT # & NOTE
D	REH	4/16/10	ADDED CASTING NOTE
C	BRG	6/9/09	ADDED BOM & UPDATED NOTES
B	FOD	5/9/00	UPDATED NOTES & DRAWING W/ NEW STANDARDS
A	ACC	11/30/99	ADDED TOLERANCE TO ID DIMENSION
REV	BY	DATE	DESCRIPTION

NOTES:

1. TEST PER Q-2.15.7.
2. REPAIR BY WELD ONLY, IMPREGNATION NOT ALLOWED.
3. SEE DOCUMENT Q-2.14 FOR MARKING PROCEEDURE.
4. SEE DOCUMENTS WPS-F03, WPS-F05, WPS-M07, & WPS-T06 FOR WELDING PROCEDURES.

UNLESS OTHERWISE SPECIFIED DIMENSIONAL TOLERANCES FRACTIONAL: ±1/16 X.XX: ±.03 X.XXX: ±.015 ANGULAR: ±1° DEBURR ALL SHARP EDGES. ALL MACHINED SURFACES TO HAVE A 125 RMS FINISH UNLESS NOTED OTHERWISE. THIRD ANGLE PROJECTION	DRAWN BY:	ACC
	CHECKED BY:	
	PROTOTYPE DATE:	12/8/1999
	APPROVED FOR PRODUCTION BY:	ACC
	PRODUCTION DATE:	12/8/1999
	SIZE:	D
DRAWING #:		13836

**QUICK CONNECT ADAPTER 3" FLANGE**

SEE BOM
961010

2 OF 2

1:1

K3SBF