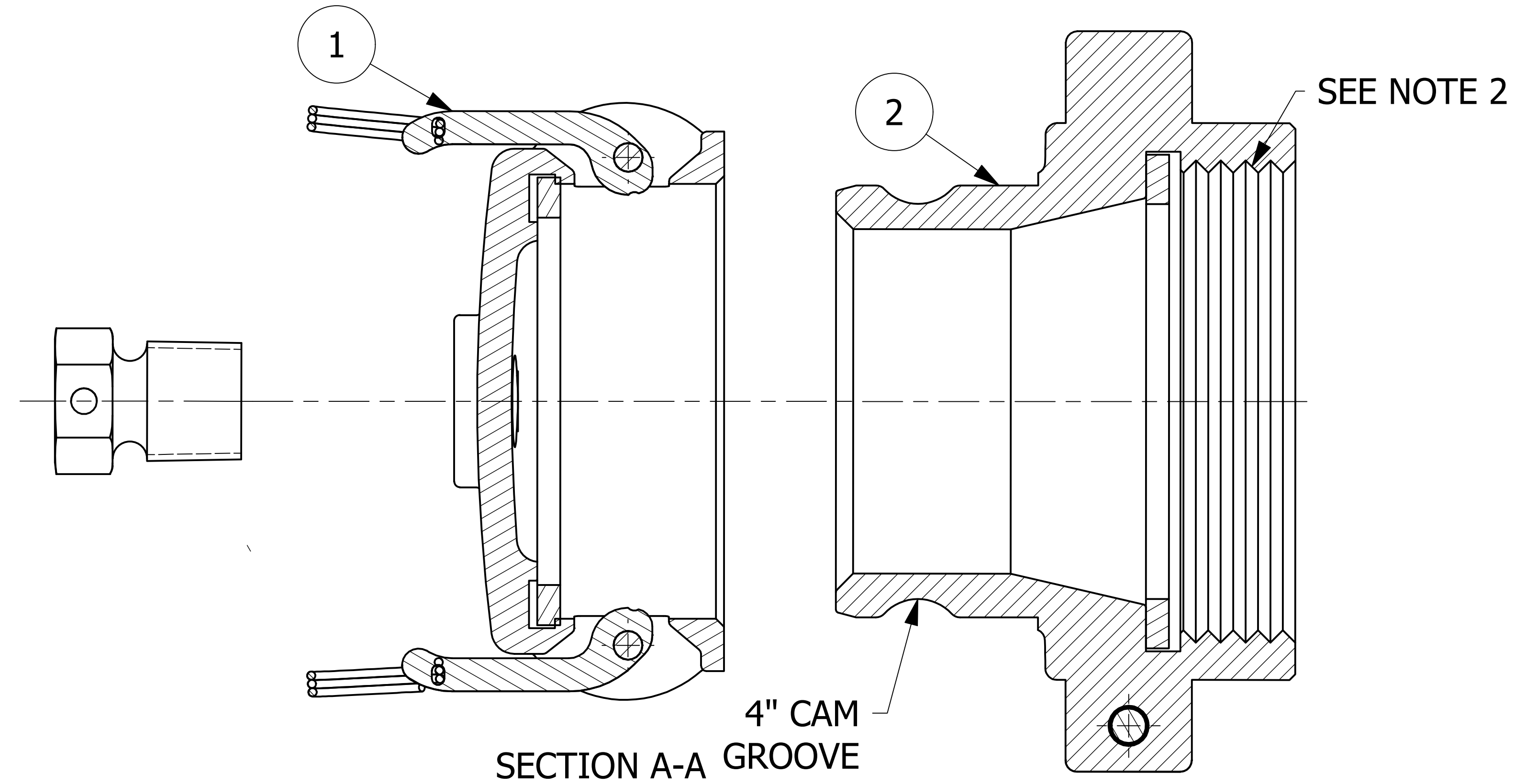
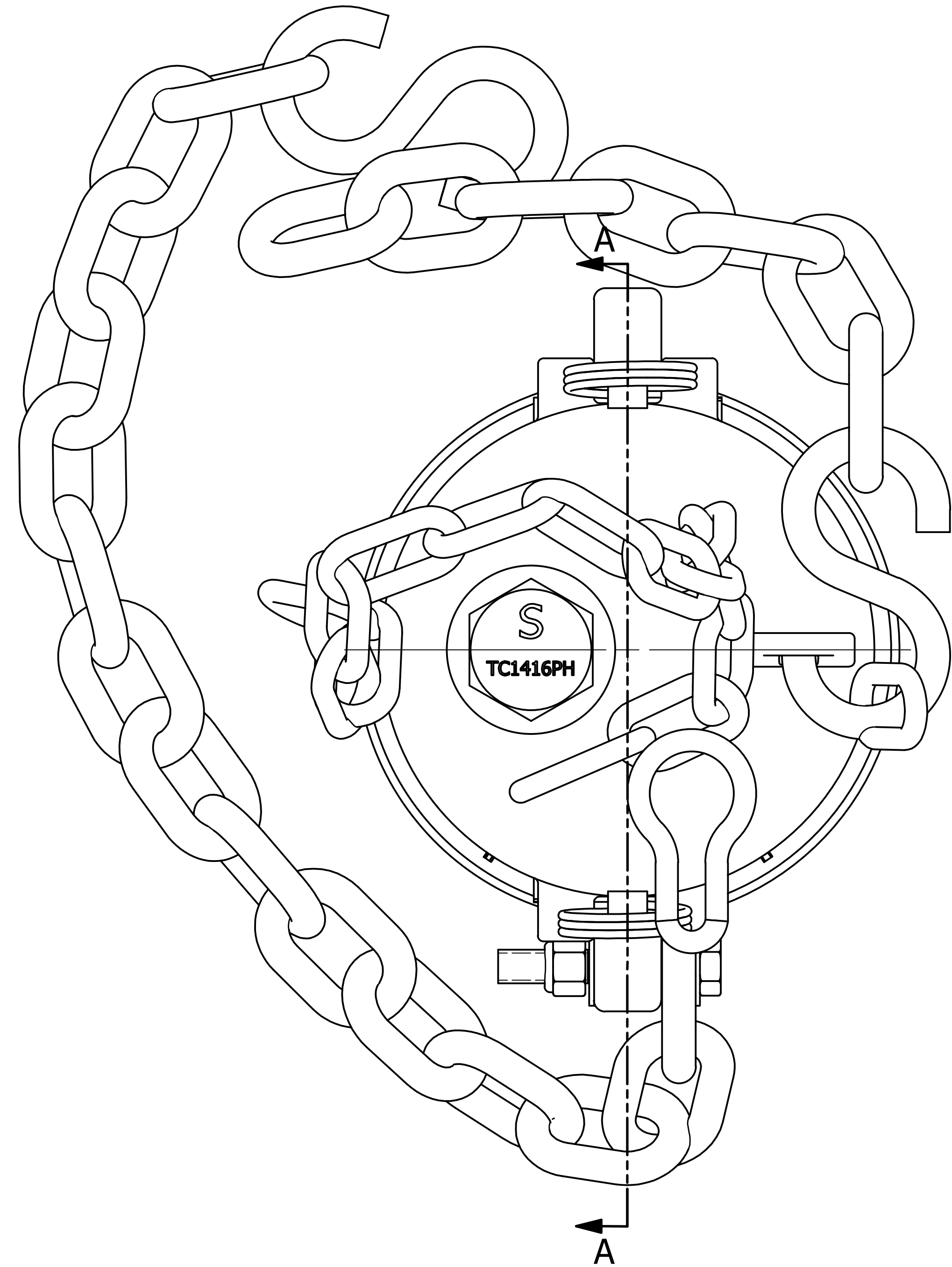


| NO. | PART NAME                          | PART #      | REQ'D | MATERIAL |
|-----|------------------------------------|-------------|-------|----------|
| 1   | QUICK CONNECT CAP 4" CAMMED        | K4SDCA2OMYA | 1     | 316 SS   |
| 2   | QUICK CONNECT ADAPTER 4" THREAD ON | K4SA2OMYA   | 1     | 316 SS   |



**NOTES:**

1. APPROXIMATE HEIGHT = 6 1/2"
2. 5 1/4"-4 UN-2B THREADS CONFORM TO ANSI B1.1 STANDARD AND FIGURE E18 FROM AAR TANK CAR MANUAL.
3. AAR APPROVAL# E-232133.
4. THIS ASSEMBLY IS NOT DOT APPROVED AND CAN BE USED ONLY ON AAR STENCILED CARS.
5. QUICK DISCONNECT MEETS A-A-59326D.
6. CASTINGS ARE 316 SS GRADE CF-8M, ASTM# A743.
7. GASKETS ARE WHITE FDA NITRILE.

|     |     |         |  |
|-----|-----|---------|--|
| E   | RPS | 4/12/24 | AAR APPROVAL# WAS E-139514                             |
| D   | RJP | 11/1/13 | AAR APPROVAL # WAS E-039015, MIL SPEC WAS MIL-C-27487G |
| C   | CHL | 1/5/04  | AAR APPROVAL # WAS E-939034                            |
| B   | FOD | 3/6/00  | UPDATED B.O.M. W/SUBASSEMBLIES, PART # WAS K4SOMYA     |
| A   | ACC | 5/13/98 | CHAIN IAMETER WAS 9/32"                                |
| REV | BY  | DATE    | DESCRIPTION  |

|  |                             |           |
|--|-----------------------------|-----------|
| UNLESS OTHERWISE SPECIFIED DIMENSIONAL TOLERANCES  | DRAWN BY:                   | BRW       |
| FRACTIONAL: ±1/16  | CHECKED BY:                 | ACC       |
| X.XX: ±.03   | PROTOTYPE DATE:             | 3/27/1996 |
| X.XXX: ±.015   | APPROVED FOR PRODUCTION BY: | ACC       |
| ANGULAR: ±1°   | PRODUCTION DATE:            | 3/27/1996 |
| DEBURR ALL SHARP EDGES. ALL MACHINED SURFACES TO HAVE A 125 RMS FINISH UNLESS NOTED OTHERWISE. | SIZE:                       | D         |
| THIRD ANGLE PROJECTION   | DRAWING #:                  | 8089      |

**SALCO PRODUCTS, INC.**

**QUICK CONNECT 4" THREAD ON**

**SEE BOM**

SHEET #: **1 OF 1** SCALE: **1:1**

**K4S2OMYA**