

NO.	PART NAME	PART #	REQ'D	MATERIAL
1	QUICK CONNECT CAP 4" CAMMED	K4SDC2A	1	316 SS
2	QUICK CONNECT ADAPTER 4" THREAD ON	K4SA2A	1	316 SS

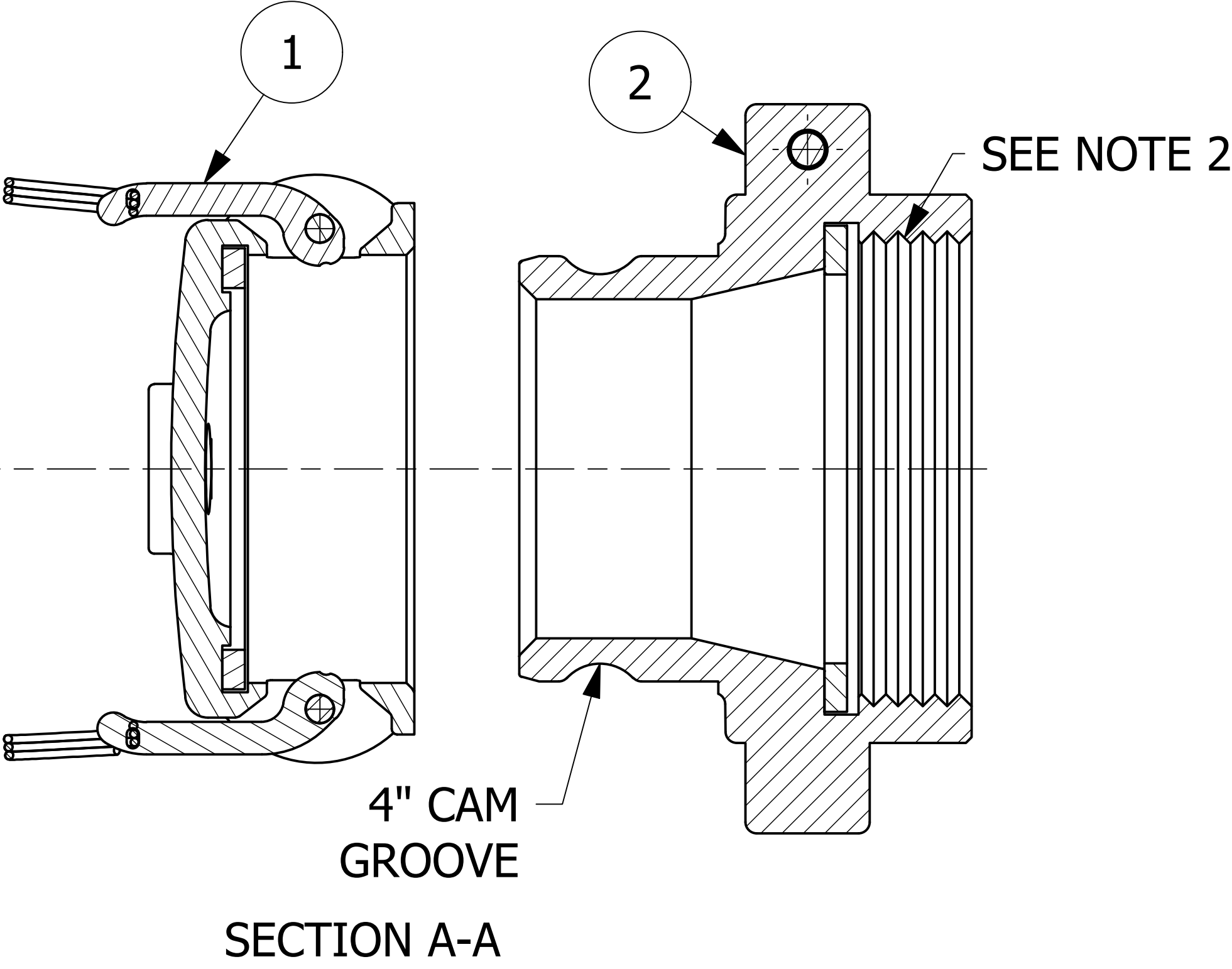
15X Ø3/8" CHAIN LINKS
APPROXIMATE LENGTH IS 21"

15X Ø3/8" CHAIN LINKS
APPROXIMATE LENGTH IS 21"

S-HOOK
SHIPS
LOOSE

S-HOOK
SHIPS
LOOSE

- NOTES:
1. APPROXIMATE HEIGHT = 6 1/2".
 2. 5 1/4" - 4 UN 2B THREADS CONFORM TO ANSI B1.1 STANDARD AND FIGURE E18 FROM AAR TANK CAR MANUAL.
 3. AAR APPROVAL # E-232133.
 4. THIS ASSEMBLY IS NOT DOT APPROVED AND CAN BE USED ONLY ON AAR STENCILED CARS.
 5. QUICK DISCONNECT MEETS A-A-59326D.
 6. CASTINGS ARE ASTM A743 GRADE CF8M 316 SS.
 7. GASKETS ARE WHITE FDA NITRILE.



G	WEB	3/13/25	AAR APPROVAL # WAS E-139514; UPDATED TITLE BLOCK
F	RJP	12/20/13	AAR APPROVAL # WAS 039015, MIL SPEC WAS MIL-C-27487G
E	CHL	1/9/04	AAR APPROVAL # WAS E-939034
D	ACC	12/21/00	UPDATED PART NUMBER AND BOM
C	MRC	11/13/97	REMOVED NIPPLE, WERE STRAIGHT ARMS
B	MRC	11/7/97	TSW916 WAS RP103MW
A	ACC	11/10/97	UPDATED BOM
REV	BY	DATE	DESCRIPTION

UNLESS OTHERWISE SPECIFIED DIMENSIONAL TOLERANCES	DRAWN BY:	ACC
FRACTIONAL: ±1/16	CHECKED BY:	ACC
X.XX: ±.03	PROTOTYPE DATE:	10/29/1996
X.XXX: ±.015	APPROVED FOR PRODUCTION BY:	ACC
ANGULAR: ±1°	PRODUCTION DATE:	10/29/1996
DEBURR ALL SHARP EDGES. ALL MACHINED SURFACES TO HAVE A 125 RMS FINISH UNLESS NOTED OTHERWISE.	SIZE:	D
THIRD ANGLE PROJECTION	DRAWING #:	8439

SALCO PRODUCTS, INC.		
PART NAME: QUICK CONNECT 4" THREAD ON		
MATERIAL: SEE BOM		
PROJECT #: 961030	SHEET #: 1 OF 1	SCALE: 3:4
PART #: K4SCU2A		