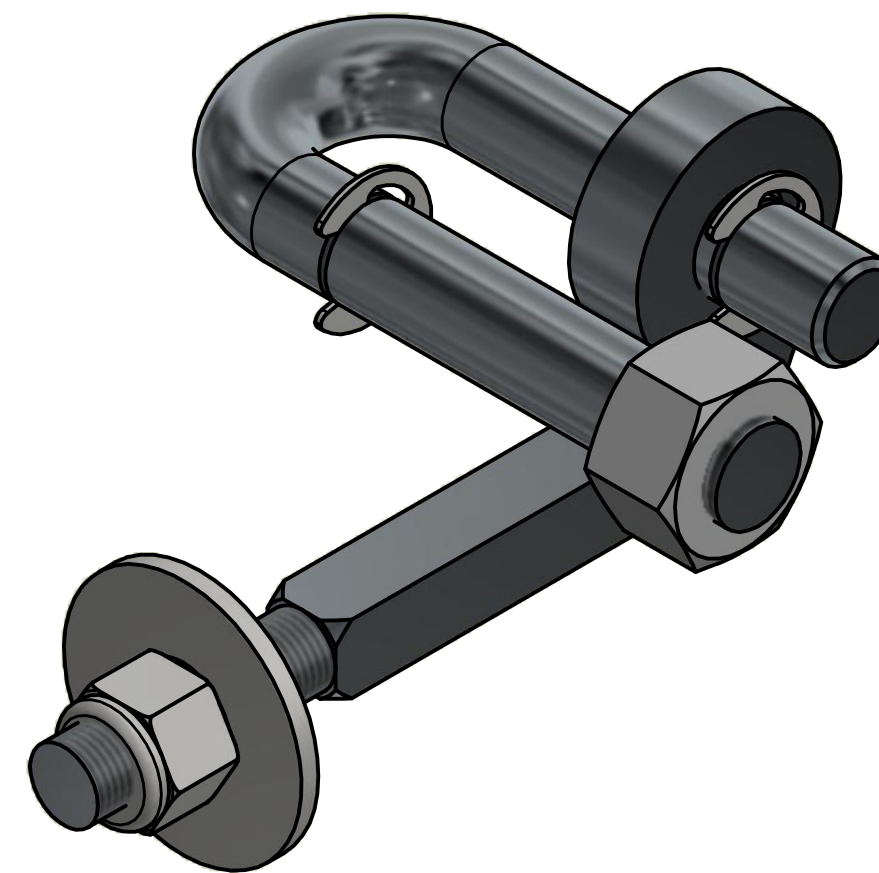
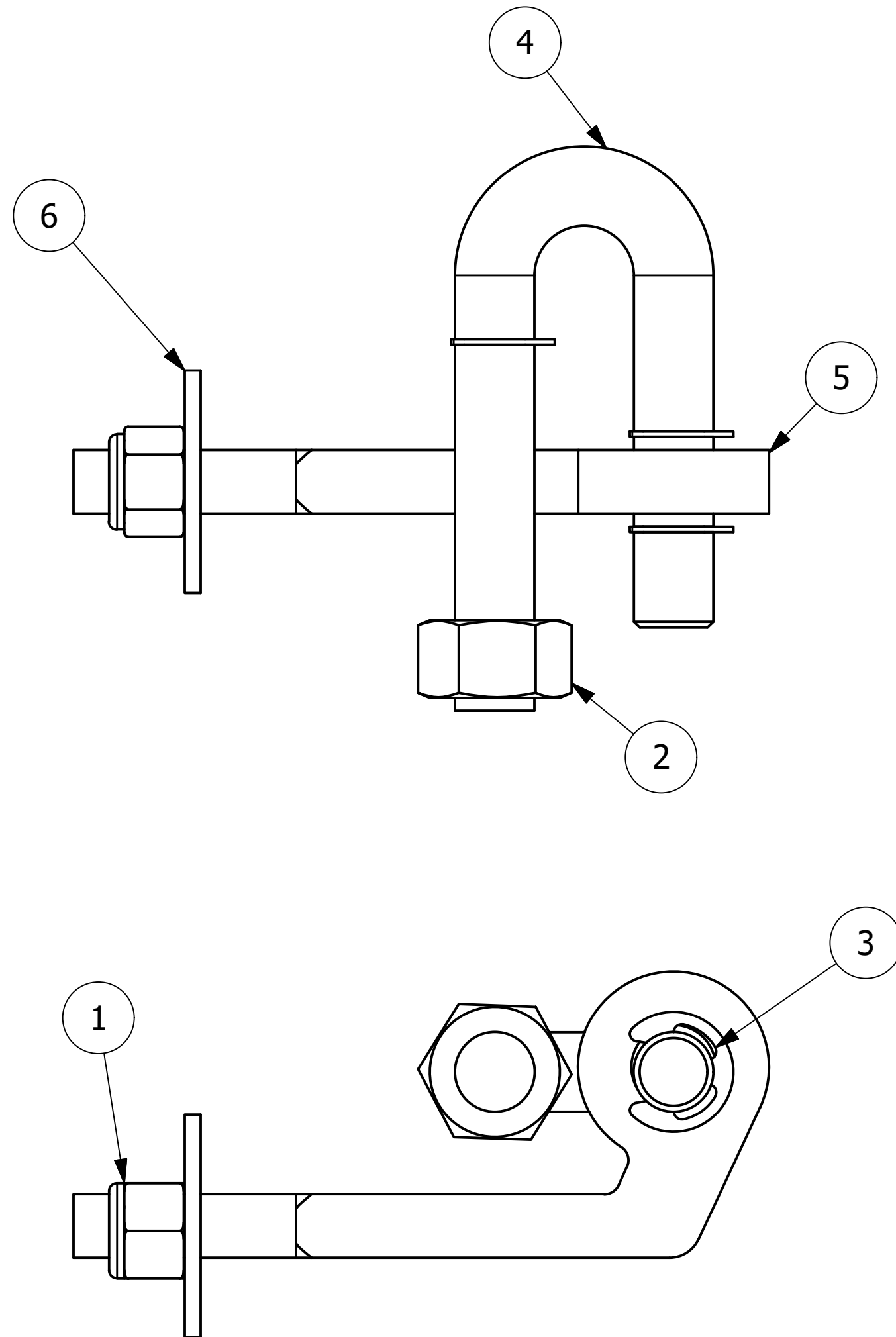


NO.	PART NAME	PART#	REQ'D	MATERIAL
1	HEX LOCK NUT 1/2"-20	A16502	1	CS Z/P
2	HEX NUT 5/8 CS	A16569	1	CARBON STEEL Z/P
3	E-CLIP 5/8"	A16570	3	CARBON STEEL Z/P
4	VALVE COVER LOCK BAR	B16492	1	CARBON STEEL Z/P
5	VALVE COVER LOCK BAR	B16493	1 </td <td>CARBON STEEL Z/P</td>	CARBON STEEL Z/P
6	FLAT WASHER 5/8" USS	HB20W	1	CS Z/P



ISOMETRIC VIEW

REV	BY	DATE	DESCRIPTION
D	BP	3/29/23	REPLACED PART A16494 WITH HB20W
C	BG	4/8/15	CHANGED LN37216 BACK TO A16569
B	JG	1/20/15	REPLACED A16569 W/ LN37216
A	CHL	6/3/02	NEW PART ADDED TO SYSTEM

UNLESS OTHERWISE SPECIFIED DIMENSIONAL TOLERANCES FRACTIONAL: $\pm 1/16$ X.XX: $\pm .03$ X.XXX: $\pm .015$ ANGLE: $\pm 1^\circ$ DEBURR ALL SHARP EDGES. ALL MACHINED SURFACES TO HAVE A 125 RMS FINISH UNLESS NOTED OTHERWISE. THIRD ANGLE PROJECTION	DRAWN BY:	CHL
	CHECKED BY:	KRS1
	PROTOTYPE DATE:	2/16/2015
	APPROVED FOR PRODUCTION BY:	KRS1
	PRODUCTION DATE:	6/3/2002
	SIZE:	C
DRAWING #:	16571	

SALCO PRODUCTS, INC.		
PART NAME: OUTLET COVER LOCK		
MATERIAL: SEE BOM		
PROJECT #:	011202B	SHEET #: 1 OF 1
PART #:		SCALE: 1 : 1
LC1932A		