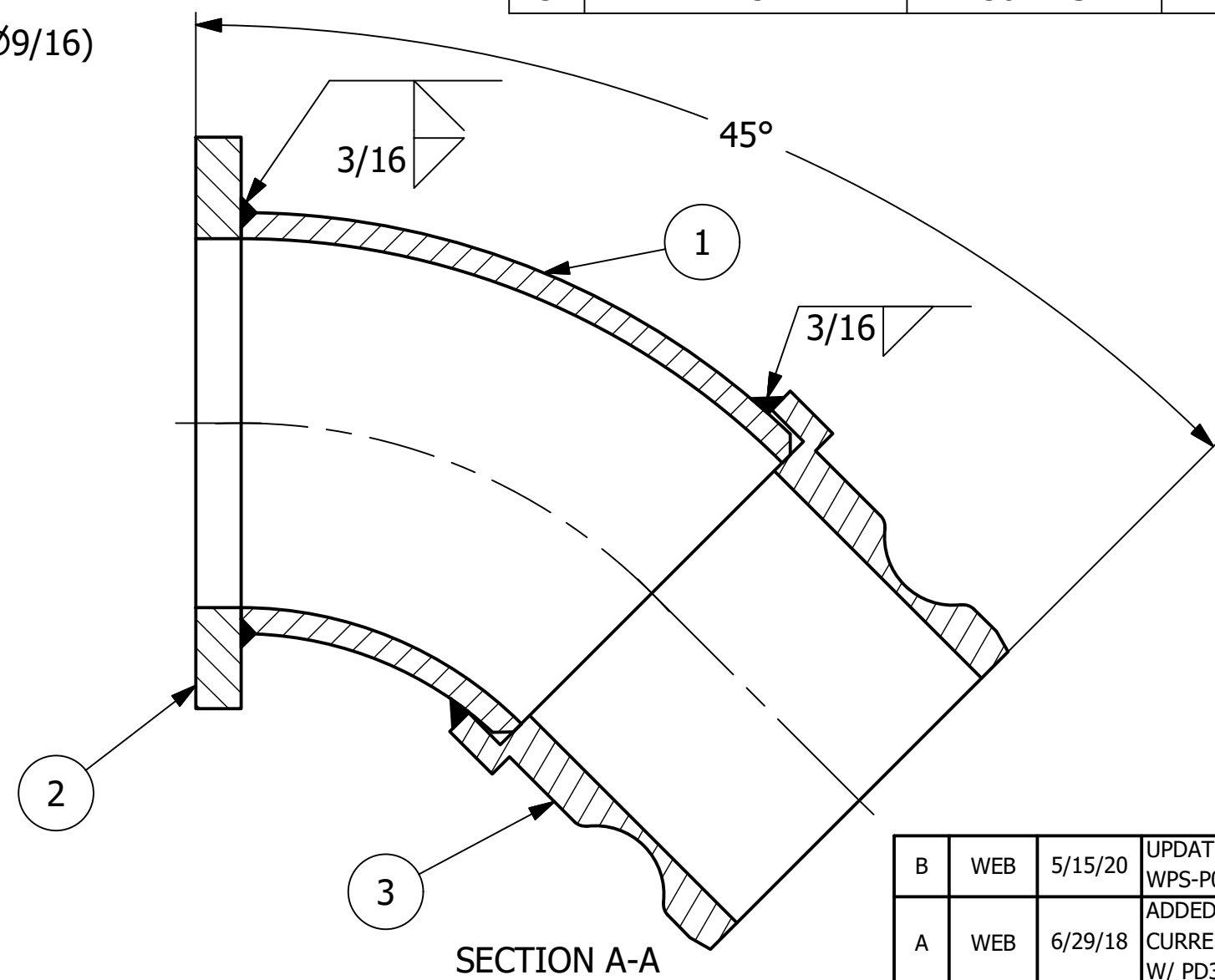
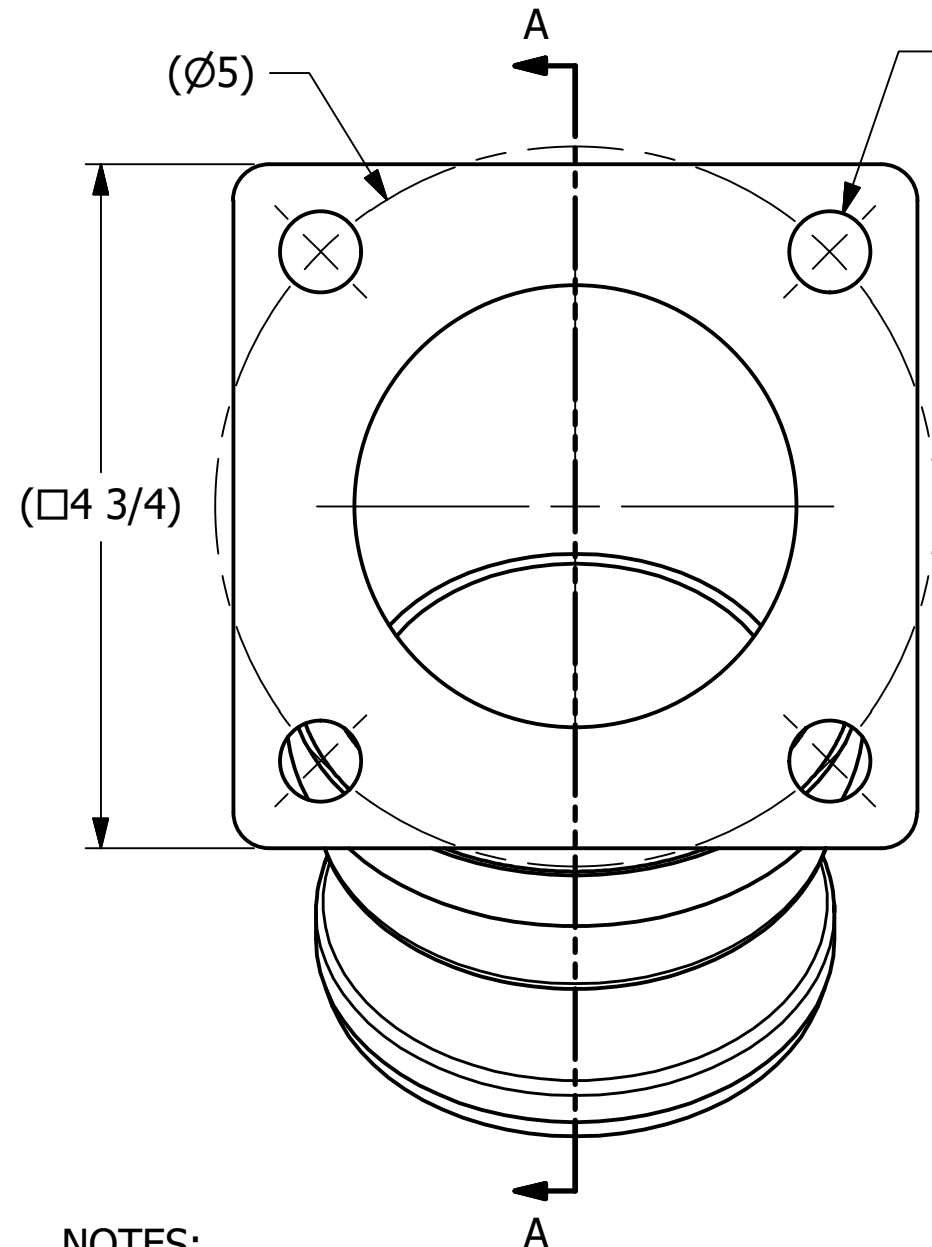


NO.	PART NAME	PART#	REQ'D	MATERIAL
1	ELBOW 3" X 45°	3A45SCH40ELB	1	ASTM B361 WP6061S
2	SQUARE FLANGE 3"	PD3ASF04	1	ASTM B209 6061-T62/T651
3	ADAPTER 3"	PT30AWSAL	1	ASTM B26 356.0-T6



- NOTES:**
1. TEST PER Q-2.15.7.
 2. SEE DOCUMENTS WPS-M08, WPS-P01, & WPS-T01 FOR WELDING SPECIFICATIONS.
 3. WELD ACCEPTANCE CRITERIA TO MEET DOCUMENT D-005.
 4. FLANGE GASKET SURFACE TO BE FREE OF WELD SPATTER.
 5. CLEAN ASSEMBLY OF DEBRIS AND OIL. REMOVE ALL BURRS AND SHARP EDGES.

REV	BY	DATE	DESCRIPTION
B	WEB	5/15/20	UPDATED WELD PROCEDURE DOCUMENTS TO WPS-M08, WPS-P01, & WPS-T01; UPDATED TITLE BLOCK
A	WEB	6/29/18	ADDED NOTES, WELD CALLOUT, AND UPDATED TO CURRENT DRAFTING STANDARDS, REPLACED PD3ASF W/ PD3ASF04

UNLESS OTHERWISE SPECIFIED DIMENSIONAL TOLERANCES		DRAWN BY:	ACC
FRACTIONAL:	±1/16	CHECKED BY:	
X.XX:	±.03	PROTOTYPE DATE:	11/27/2001
X.XXX:	±.015	APPROVED FOR PRODUCTION BY:	ACC
ANGULAR:	±1°	PRODUCTION DATE:	11/27/2001
DEBURR ALL SHARP EDGES. ALL MACHINED SURFACES TO HAVE A 125 RMS FINISH UNLESS NOTED OTHERWISE.		SIZE:	B
THIRD ANGLE PROJECTION		DRAWING #:	16455

SALCO PRODUCTS, INC.

PART NAME: **ELBOW 3"X45°**

MATERIAL: **SEE BOM**

PROJECT #: **010910** SHEET #: **1 OF 1** SCALE: **3:4**

PART #: **PD3A45F01A**