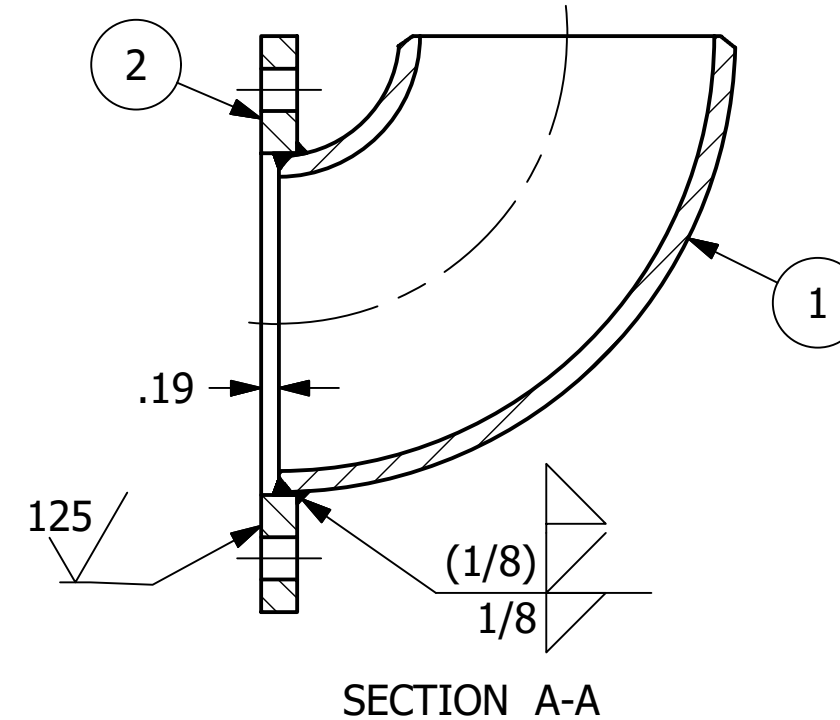
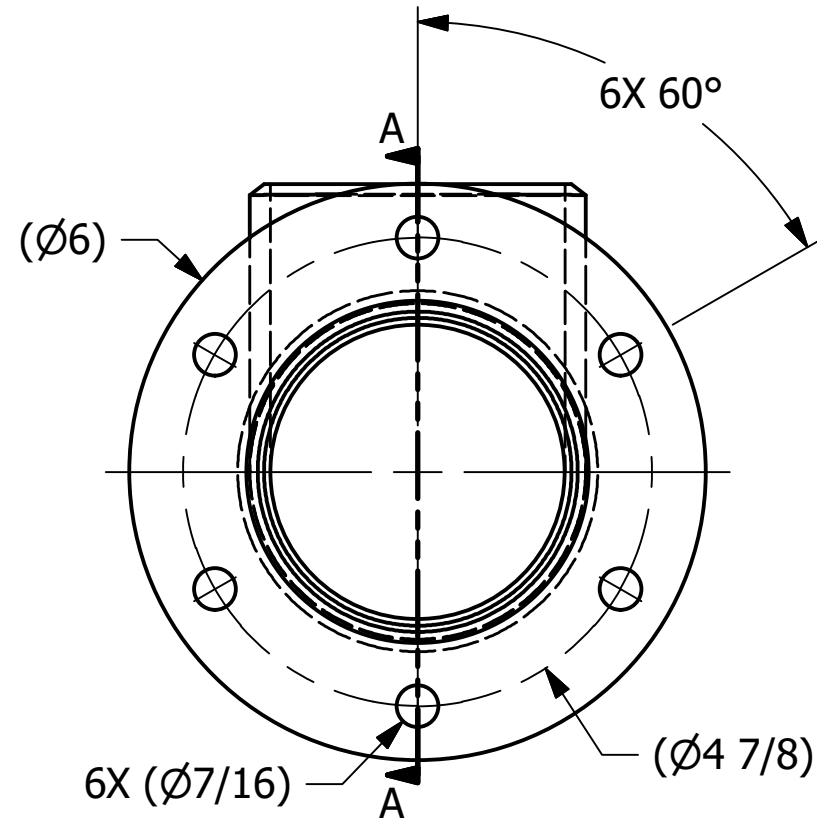


NO.	PART NAME	PART#	REQ'D	MATERIAL
1	ELBOW 3" X 90°	3A90SCH40ELB	1	ASTM B361 WP6061S
2	ROUND FLANGE 3"	PD3ARF	1	ASTM B209 6061-T62/T651



- NOTES:
1. TEST PER Q-2.15.7.
 2. SEE DOCUMENTS WPS-T01, WPS-M09, & WPS-P01 FOR WELDING PROCEDURE.
 3. WELD ACCEPTANCE CRITERIA TO MEET DOCUMENT D-005.

REV	BY	DATE	DESCRIPTION
E	TAK	4/7/20	UPDATED MATERIAL FOR PD3ARF
D	WEB	2/18/20	UPDATED TITLEBLOCK, PART NAME, & BOM MATERIALS; TEST PER Q-2.15.7 WAS PART MUST PASS QAP4E-1; UPDATED WELD PROCEDURE TO WPS-T01, WPS-M09, & WPS-P01; ADDED D-005 NOTE; UPDATED WELD SYMBOL
C	BRG	2/18/09	ADDED SURFACE FINISH NOTE
B	PJG	6/18/07	ADDED NOTE AND WELD SYMBOL
A	ACC	2/25/02	FLANGE WAS PD3AUF

UNLESS OTHERWISE SPECIFIED DIMENSIONAL TOLERANCES		DRAWN BY:	ACC
FRACTIONAL:	$\pm 1/16$	CHECKED BY:	
X.XX:	$\pm .03$	PROTOTYPE DATE:	1/4/2002
X.XXX:	$\pm .015$	APPROVED FOR PRODUCTION BY:	ACC
ANGULAR:	$\pm 1^\circ$	PRODUCTION DATE:	1/14/2002
DEBURR ALL SHARP EDGES. ALL MACHINED SURFACES TO HAVE A 125 RMS FINISH UNLESS NOTED OTHERWISE.		SIZE:	B
THIRD ANGLE PROJECTION		DRAWING #:	16600

SALCO PRODUCTS, INC.

PART NAME: **ELBOW 3" X 90°**

MATERIAL: **SEE BOM**

PROJECT #: **010910** SHEET #: **1 OF 1** SCALE: **1:2**

PART #: **PD3A90F03**