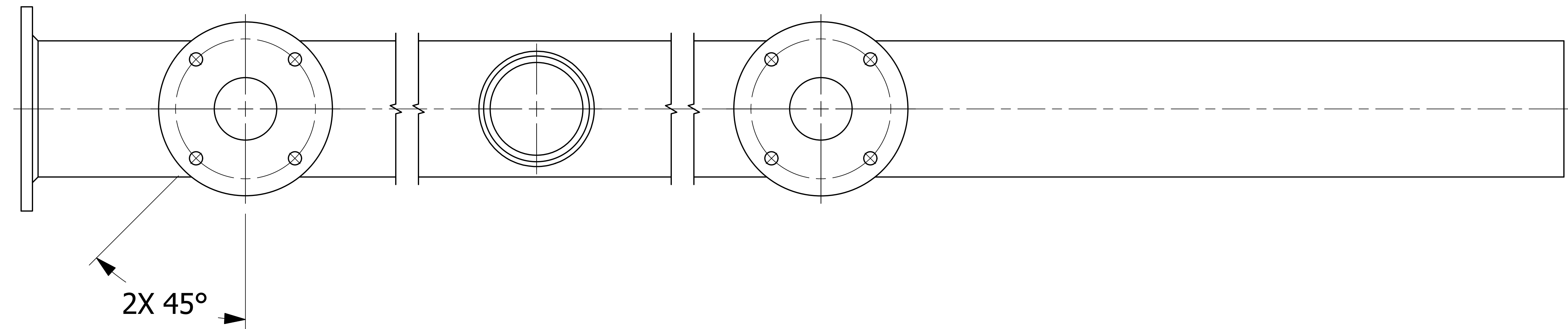
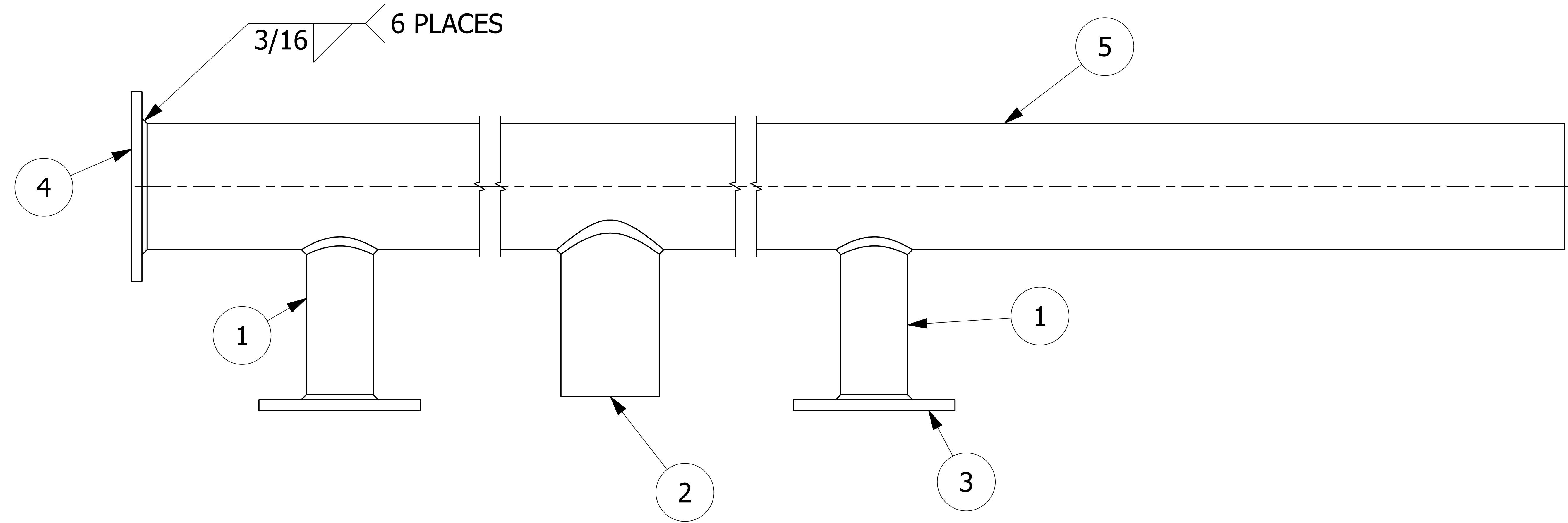
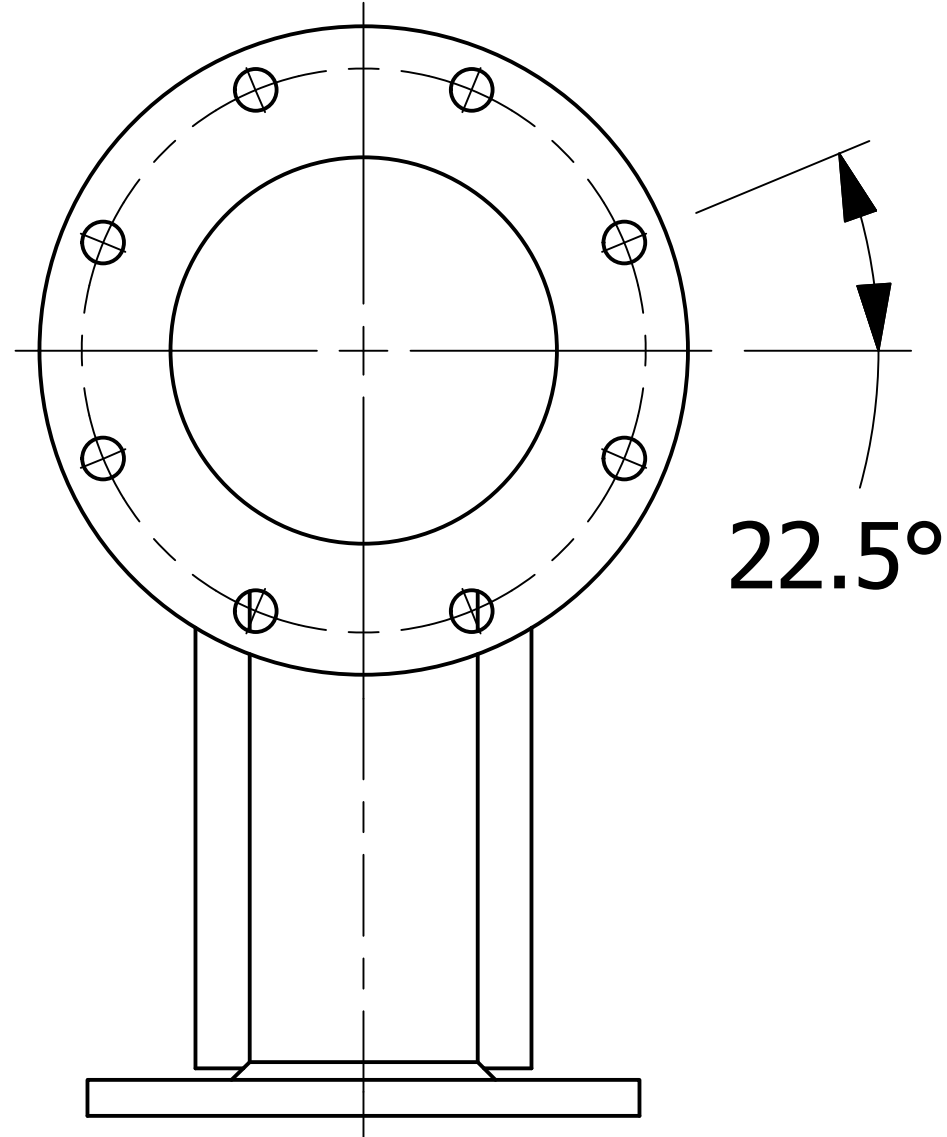


NO.	PART NAME	PART#	REQ'D	MATERIAL
1	PIPE 2"	A48710	2	6061-T6 ALUMINUM
2	PIPE 3"	A48711	1	ASTM B241 6063-T6 AL
3	FLANGE 2"	C37134	2	6061-T6 ALUMINUM
4	FLANGE 4"	C37135	1	6061-T6
5	PIPE 4"	D37133	1	6063-T6



- NOTES:**
1. SEE DOCUMENTS WPS-P01, WPS-M08 & WPS-T01 FOR APPROVED WELDING PROCEDURES.
 2. WELD ACCEPTANCE CRITERIA TO MEET DOCUMENT D-005.
 3. TEST PER Q-2.15.7.

REV	BY	DATE	DESCRIPTION
C	CHL	3/11/20	REMOVED DIMS, ADDED WPS-P01 & Q-2.15.7 NOTE
B	WEB	2/15/19	UPDATED WELD NOTE TO WPS-M08 & WPS-T01; ADDED D-005 NOTE; DRAWING# WAS E16311, UPDATED BOM MATERIALS, REPLACED P2A40 & P3A40 W/A48710 & A48711
A	WEB	4/5/17	RELEASED FOR PRODUCTION

UNLESS OTHERWISE SPECIFIED DIMENSIONAL TOLERANCES FRACTIONAL: ±1/16	DRAWN BY:	CHL
X.XX: ±.03	CHECKED BY:	ACC
X.XXX: ±.015	PROTOTYPE DATE:	1/28/2002
ANGULAR: ±1°	APPROVED FOR PRODUCTION BY:	EJF
DEBURR ALL SHARP EDGES. ALL MACHINED SURFACES TO HAVE A 125 RMS FINISH UNLESS NOTED OTHERWISE.	PRODUCTION DATE:	4/5/2017
THIRD ANGLE PROJECTION	SIZE:	E
	DRAWING #:	16655

SALCO PRODUCTS, INC.

PART NAME: **AIR INTAKE MANIFOLD 4"**

MATERIAL: **SEE BOM**

PROJECT #: **011001** SHEET #: **1 OF 1** SCALE: **1:2**

PART #: **PD4AIM01**