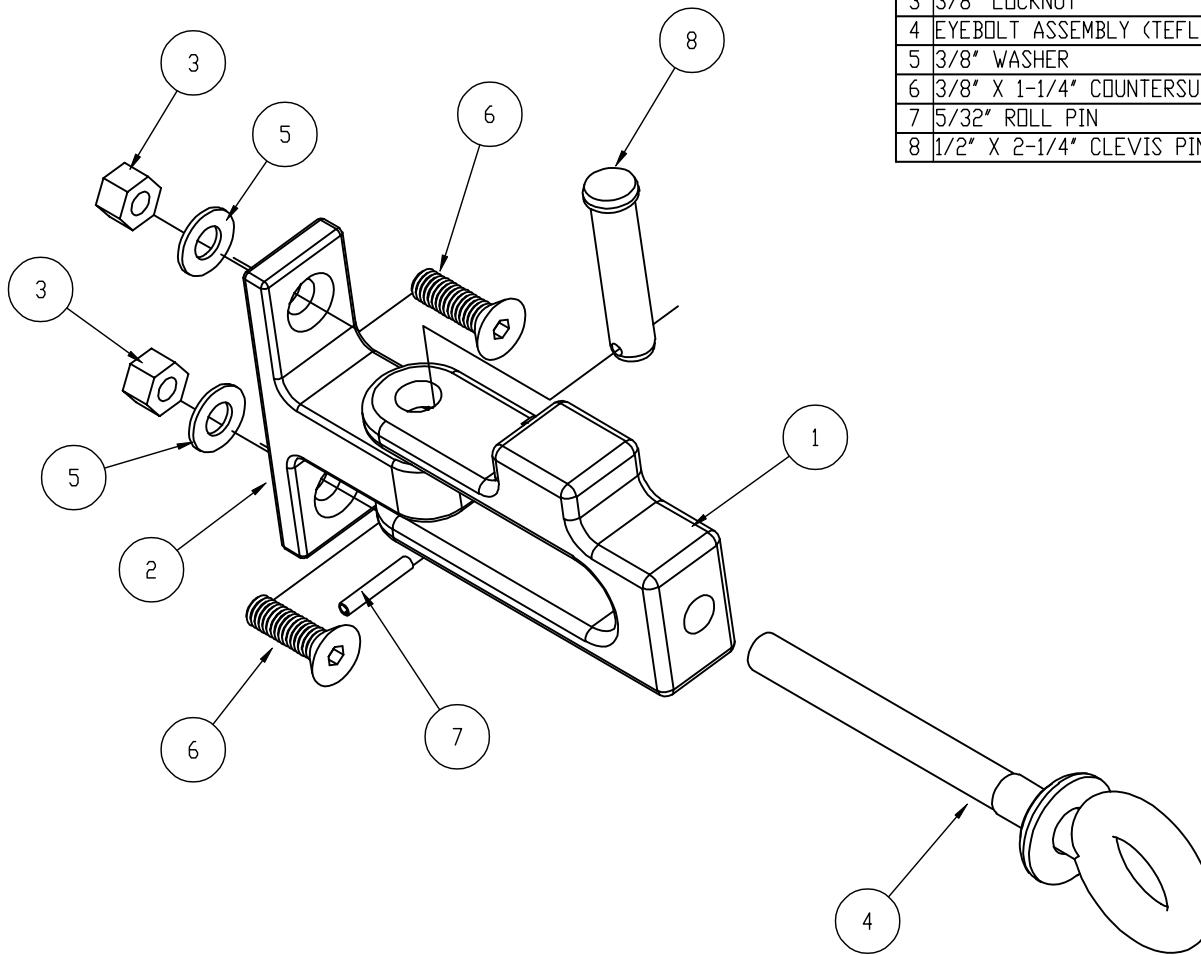


NO.	PART NAME	PART #	REQ'D	MATERIAL
1	PIVOT ARM	EA111PAB	1	ALUMINUM
2	GATE BRACKETS	EA111ACB	1	ALUMINUM
3	3/8" LOCKNUT	EA111N	2	CS Z/P
4	EYEBOLT ASSEMBLY (TEFLON COATED)	EB205TA	1	CARBON STEEL
5	3/8" WASHER	KL103FW	2	CS Z/P
6	3/8" X 1-1/4" COUNTERSUNK BOLT	SHC3815S	2	18-8 SS
7	5/32" ROLL PIN	T532RP	1	18-8 SS
8	1/2" X 2-1/4" CLEVIS PIN	YSD225CP	1	18-8 SS



NOTE:
SEE DRAWING FOR PART NUMBER RG11100A FOR PROPER
ORIENTATION OF THIS ASSEMBLY.


B	ACC	1-26-07	BOM ITEM #6 WAS SHC381S
A	ACC	11-11-99	COUNTERSUNK BOLT WAS A13236
REVI	BY	DATE	DESCRIPTION

UNLESS OTHERWISE SPECIFIED
DIMENSIONAL TOLERANCES

FRACTIONAL	±1/16
X.XX	±0.03
X.XXX	±0.015
ANGULAR	±1°

THIS PRINT, PROPERTY OF SALCO PRODUCTS INC.
CONTAINS PROPRIETARY INFORMATION AND MUST
NOT BE COPIED, REPRODUCED, OR USED
IN WHOLE OR IN PART WITHOUT THE WRITTEN
CONSENT OF SALCO PRODUCTS INC.

THIRD ANGLE PROJECTION

SALCO PRODUCTS			
DRAWN BY: ACC	CHKD BY:	SCALE: 1:1	APPROVAL DATE: 8-16-99
MATERIAL: SEE BOM			
PART NAME: LEFT HAND PIVOT ARM ASSEMBLY			
PROJECT #: 970223B	PROTOTYPE AND DATE:	APPROVED FOR PRODUCTION: ACC	
DRAWING #: C13678	PART #: RG111LPA		