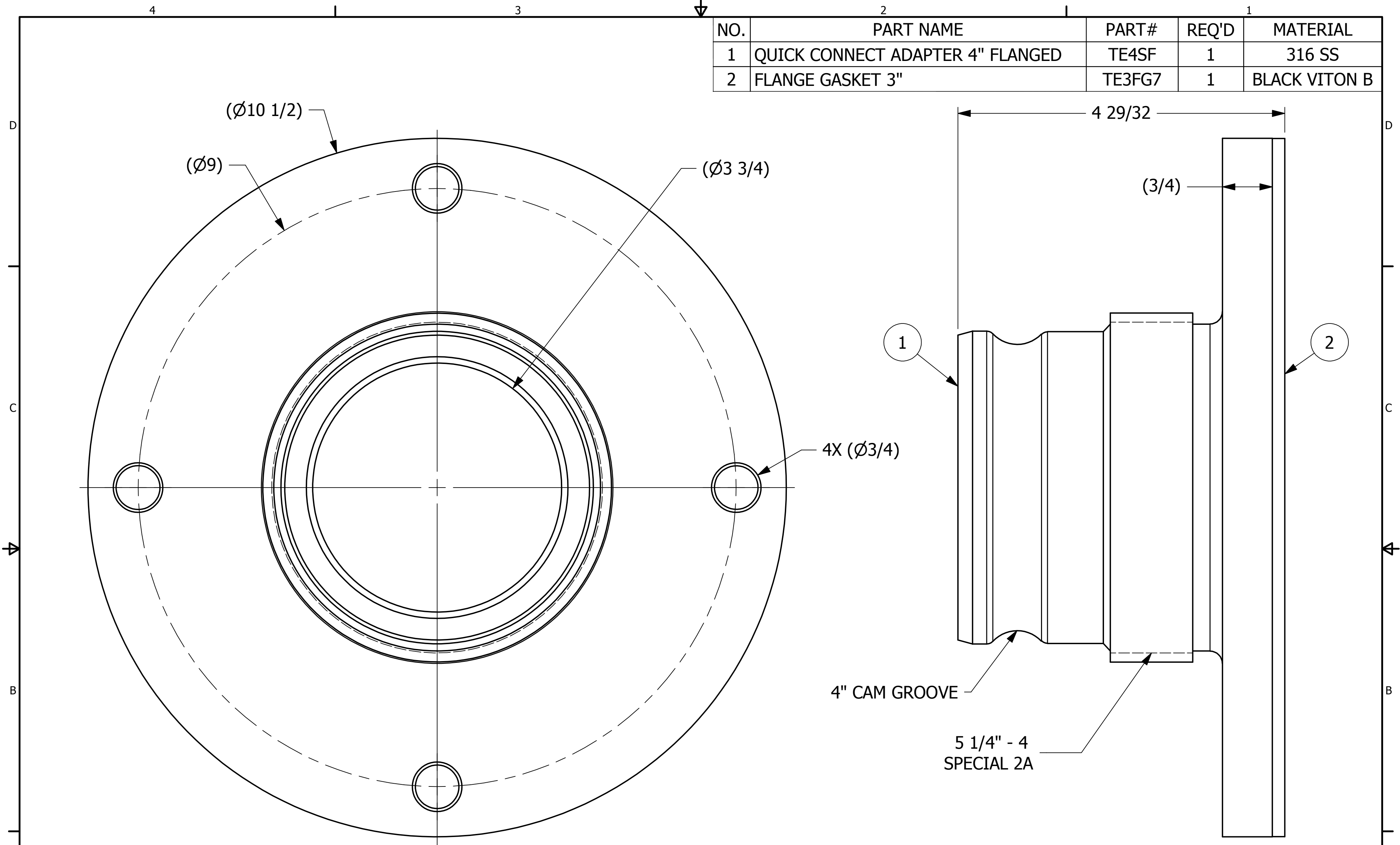


NO.	PART NAME	PART #	REQ'D	MATERIAL
1	QUICK CONNECT ADAPTER 4" FLANGED	TE4SF	1	316 SS
2	FLANGE GASKET 3"	TE3FG7	1	BLACK VITON B



**NOTES:**

1. THIS ASSEMBLY IS AAR AND DOT APPROVED.
2. AAR APPROVAL # E-149523.
3. QUICK DISCONNECT MEETS A-A-59326D.
4. ADAPTER THREADS PER FIGURE E.18 IN THE AAR TANK CAR MANUAL.

REV	BY	DATE	DESCRIPTION
B	WEB	11-17-15	ADDED NOTES, UPDATED TITLEBLOCK
A	WEB	8-12-13	RELEASED FOR PRODUCTION

<small>UNLESS OTHERWISE SPECIFIED DIMENSIONAL TOLERANCES FRACTIONAL: ±1/16 X.XX: ±.03 X.XXX: ±.015 ANGLE: ±1° DEBURR ALL SHARP EDGES. ALL MACHINED SURFACES TO HAVE A 125 RMS FINISH UNLESS NOTED OTHERWISE.</small>	DRAWN BY:	WEB
	CHECKED BY:	CHL
	PROTOTYPE BY:	WEB
	PROTOTYPE DATE:	8/9/2013
	APPROVED FOR PRODUCTION BY:	WEB
	PRODUCTION DATE:	8/12/2013

**SALCO PRODUCTS, INC.**

PART NAME: **QUICK CONNECT ADAPTER 4" FLANGED**

MATERIAL: **SEE BOM**

PROJECT #: **130709FR** SHEET #: **1 OF 1** SCALE: **1:1**

DRAWING #: **C36927** PART #: **TE4SF7**