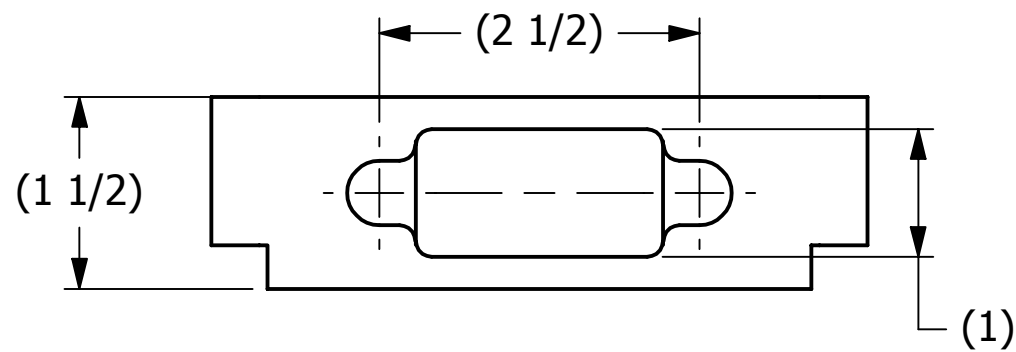
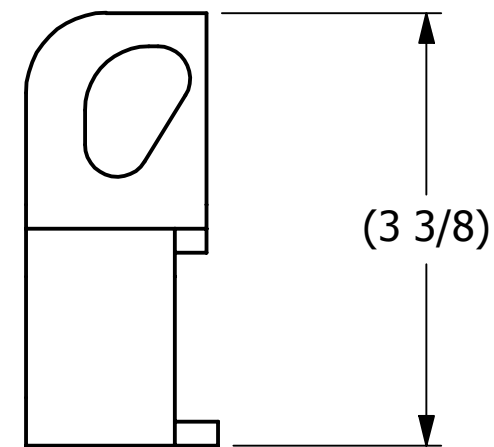
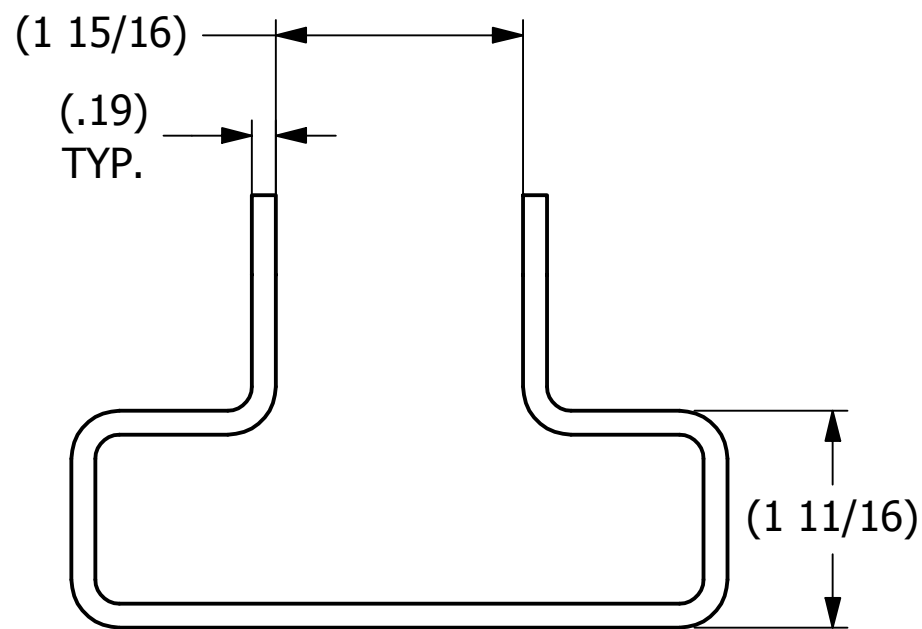


SALES DRAWING

SALES DRAWING



REV	BY	DATE	DESCRIPTION
D	CHL	6-19-12	DIM 13.50, 3.38 WAS 14.50, 3.88
C	GS	6-4-12	UPDATED DIMENSIONS
B	CHL	6-1-12	ADDED FLAT PATTERN, REMOVED BOM
A	ACC	5-17-07	ADDED PART INTO SYSTEM

<small>UNLESS OTHERWISE SPECIFIED DIMENSIONAL TOLERANCES</small> FRACTIONAL: $\pm 1/16$ X.XX: $\pm .03$ X.XXX: $\pm .015$ ANGULAR: $\pm 1^\circ$ <small>DEBURR ALL SHARP EDGES. ALL MACHINED SURFACES TO HAVE A 125 RMS FINISH UNLESS NOTED OTHERWISE.</small>	DRAWN BY:	ACC
	CHECKED BY:	PJG
	PROTOTYPE BY:	ACC
	PROTOTYPE DATE:	5/17/2007
	APPROVED FOR PRODUCTION BY:	PJG
<small>THIRD ANGLE PROJECTION</small> 	PRODUCTION DATE:	5/17/2007

PART NAME: SAFETY CATCH		
MATERIAL: CARBON STEEL		
PROJECT #: 010427B	SHEET #: 1 OF 1	SCALE: 2:3
DRAWING #: B20033	PART #: CLSFCZK	

THIS PRINT, PROPERTY OF SALCO PRODUCTS INC., CONTAINS PROPRIETARY INFORMATION AND MUST NOT BE COPIED, REPRODUCED, OR USED DETRIMENTALLY TO OUR INTEREST.