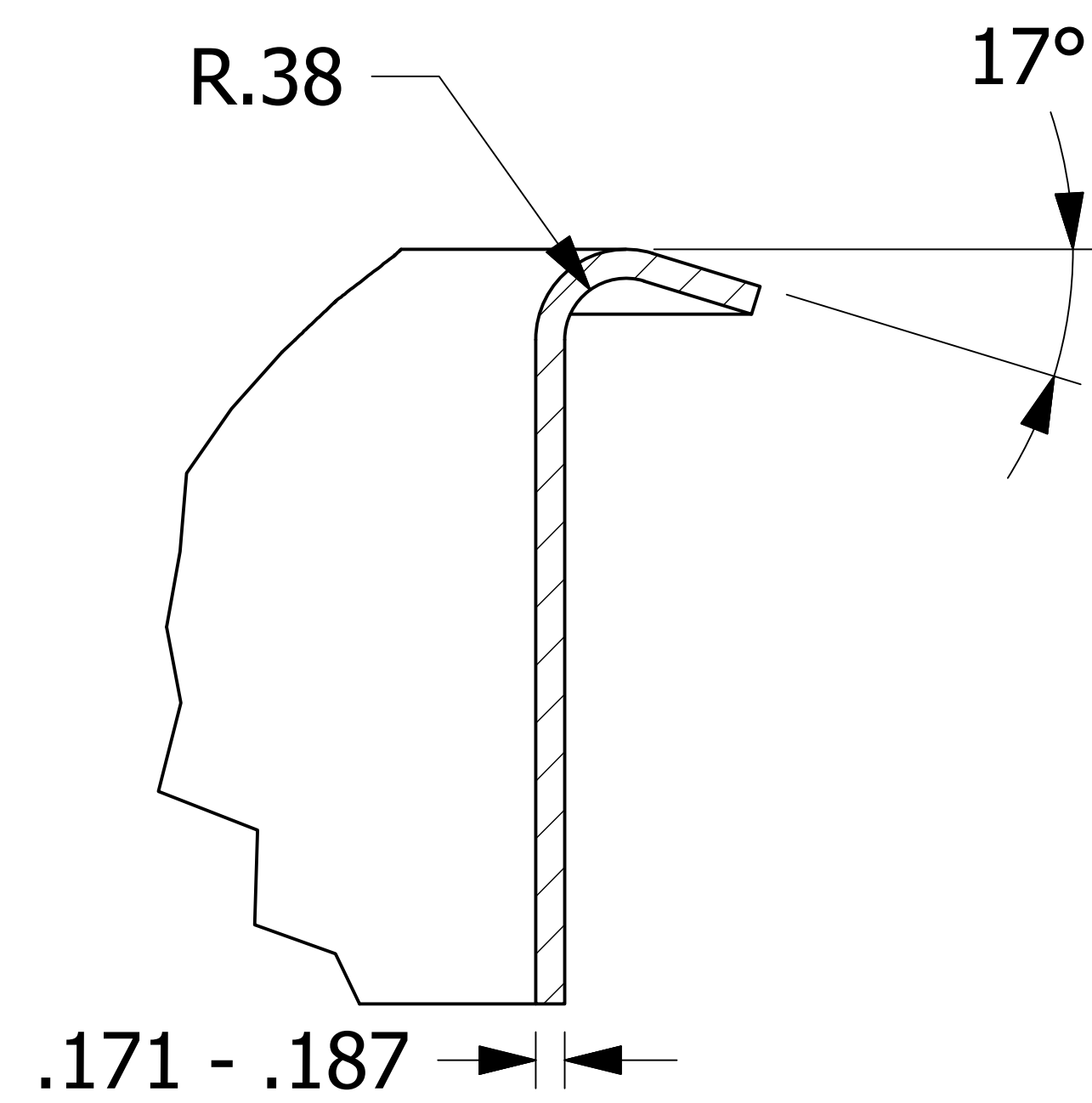
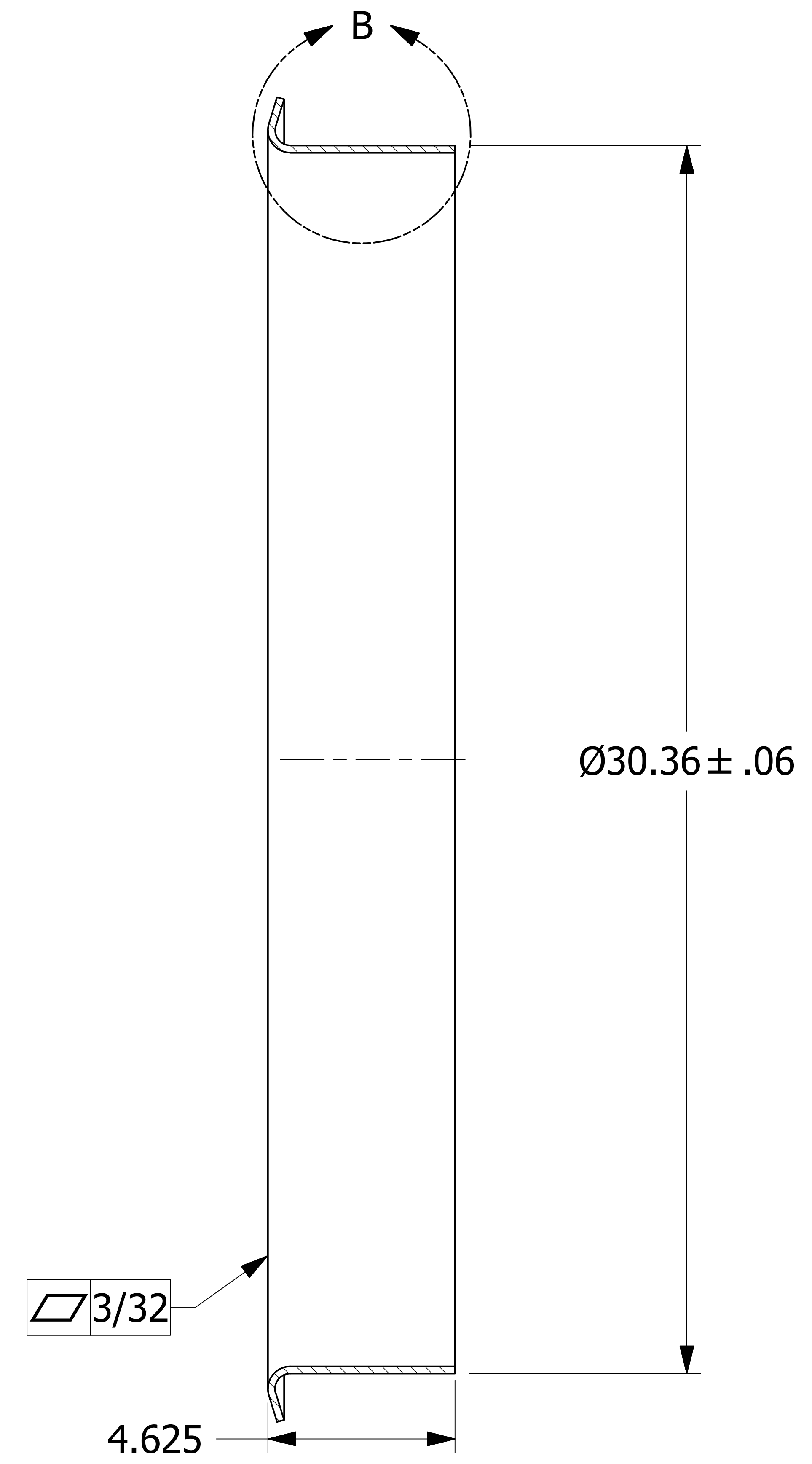
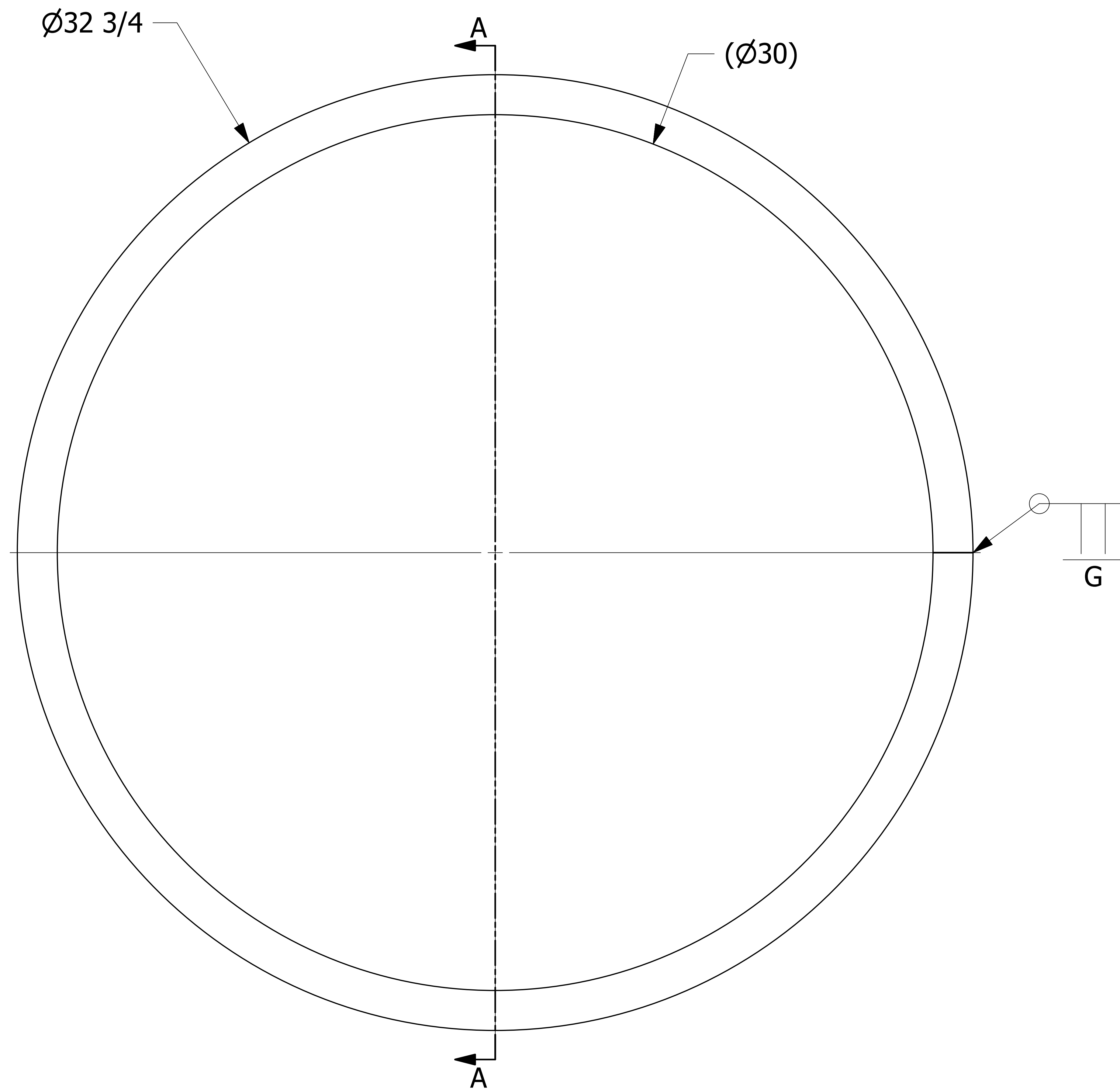


NOTE:
 WELDING MUST BE IN ACCORDANCE WITH AWS D15.1, OR APPROVED EQUIVALENT,
 BY CERTIFIED WELDERS. PROCEDURES NEED TO BE VENDOR SUPPLIED
 AND SALCO APPROVED.



DETAIL B
 SCALE 1 : 1

REV	BY	DATE	DESCRIPTION
C	BP	5/24/22	CHANGED FLATNESS 1/16 FROM TO 3/32
B	WEB	2/1/17	REMOVED CYLINDRICITY CONTROL FRAME, CHANGED DIM FROM $\text{Ø}32 \frac{21}{32}$ TO $\text{Ø}32 \frac{3}{4}$, MADE DIMS $\text{Ø}30$ & .187/171 WAS 179, UPDATED WELD SYMBOL
A	CHL	9/15/11	DRAWING ADDED TO NETWORK

UNLESS OTHERWISE SPECIFIED DIMENSIONAL TOLERANCES	DRAWN BY:	CHL
FRACTIONAL: $\pm 1/16$	CHECKED BY:	PJG
X.XX: $\pm .03$	PROTOTYPE DATE:	10/8/2009
X.XXX: $\pm .015$	APPROVED FOR PRODUCTION BY:	PJG
ANGULAR: $\pm 1^\circ$	PRODUCTION DATE:	9/15/2011
DEBURR ALL SHARP EDGES. ALL MACHINED SURFACES TO HAVE A 125 RMS FINISH UNLESS NOTED OTHERWISE.	SIZE:	E
THIRD ANGLE PROJECTION	DRAWING #:	27589

SALCO PRODUCTS, INC.

PART NAME: **HATCH RING 30"**

MATERIAL: **304 SS**

PROJECT #: **090925** SHEET #: **1 OF 1** SCALE: **1 / 2**

PART #: **HCR30SS**