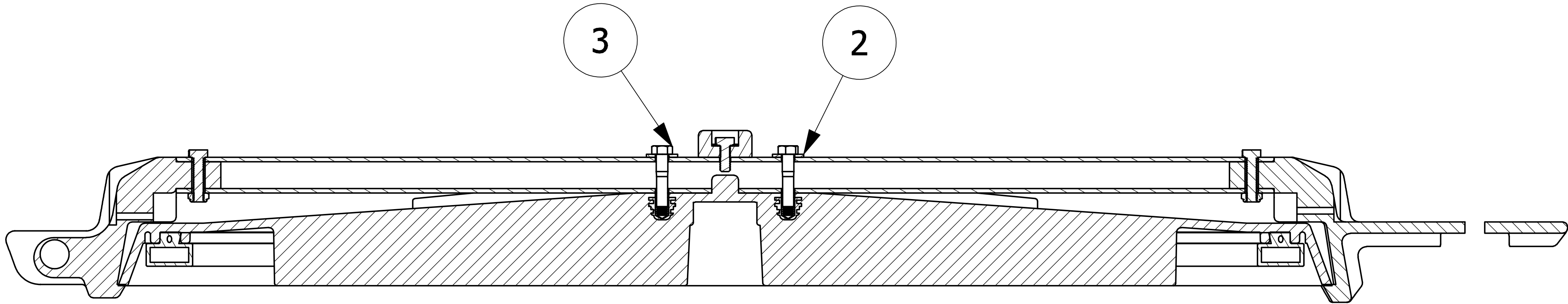
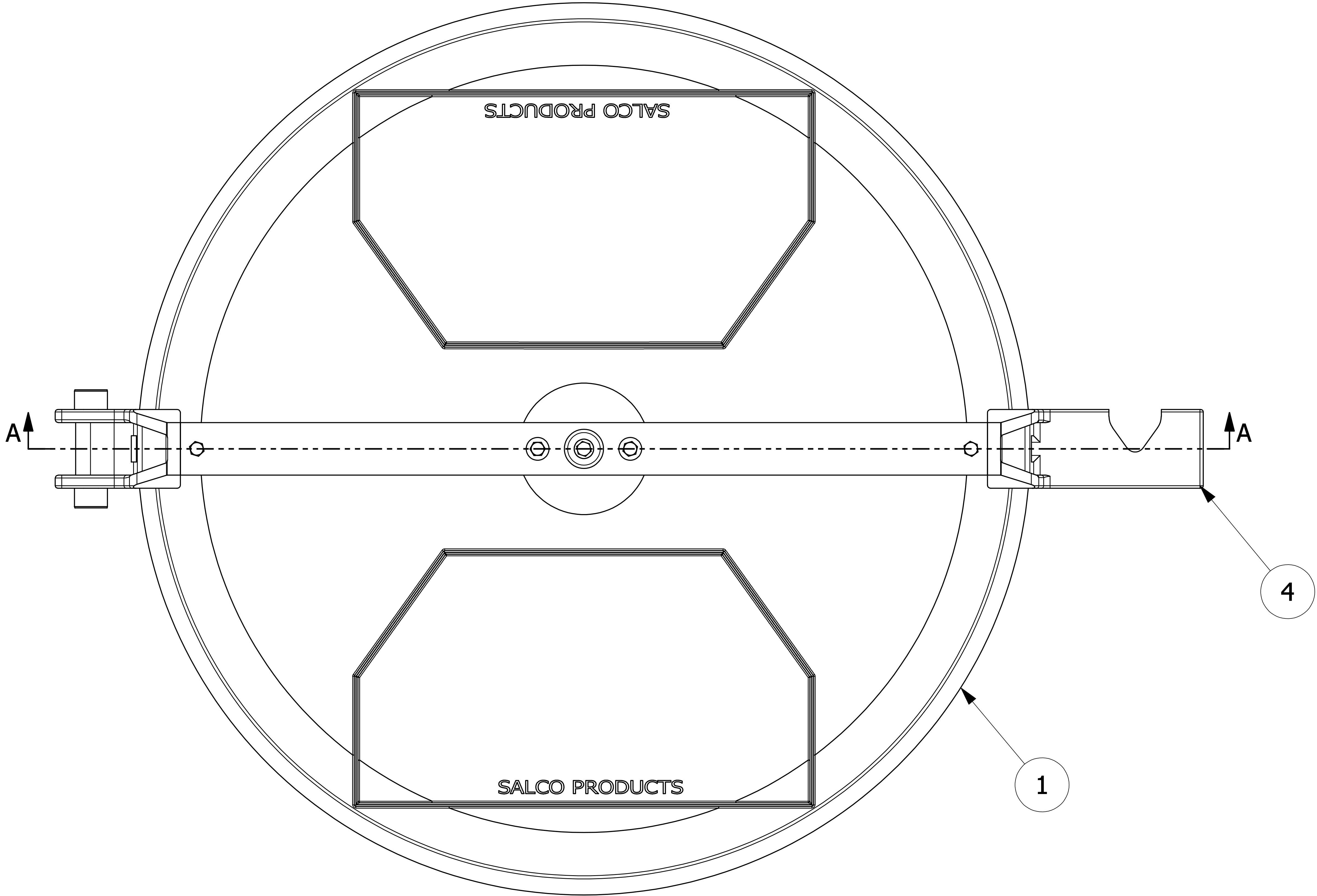


NO.	PART NAME	PART#	RE	MATERIAL
1	HATCH COVER 30"	PHC3007AS	1	SEE DWG
2	FLAT WASHER 5/16" USS	WASH516SS	2	18-8 SS
3	HEX BOLT 5/16"-18X1 1/2"	HB51615SS	2	18-8 SS
4	HATCH COVER ARM ASSEMBLY 30"	AE3007TPSA	1	SEE DWG



B	BRG	7-22-09	UPDATED DRAWING WITH NEW PHC3007AS	
A	PJG	8-25-08	NEW PART ADDED TO SYSTEM	
REV	BY	DATE	DESCRIPTION	
<div><div><div></div><div>SALCO PRODUCTS, INC.</div></div><div>PART NAME: HATCH COVER 30"</div></div>				
MATERIAL: SEE BOM				
PROJECT #:		060314	SHEET #:	1 OF 1
			SCALE:	1/2
DRAWING #:		E24466	PART #: PHC3007TPS	

UNLESS OTHERWISE SPECIFIED DIMENSIONAL TOLERANCES  FRACTIONAL: ±1/16 X.XX: ±.03 X.XXX: ±.015 ANGULAR: ±1°  <small>THIS PRINT, PROPERTY OF SALCO PRODUCTS INC. CONTAINS PROPRIETARY INFORMATION AND MUST NOT BE COPIED, REPRODUCED, OR USED DETRIMENTALLY TO OUR INTEREST.</small>  THIRD ANGLE PROJECTION	DRAWN BY:	PJG
	CHECKED BY:	PJG
	PROTOTYPE BY:	PJG
	PROTOTYPE DATE:	11/27/2007
	APPROVED FOR PRODUCTION BY:	PJG
PRODUCTION DATE:		8/25/2008