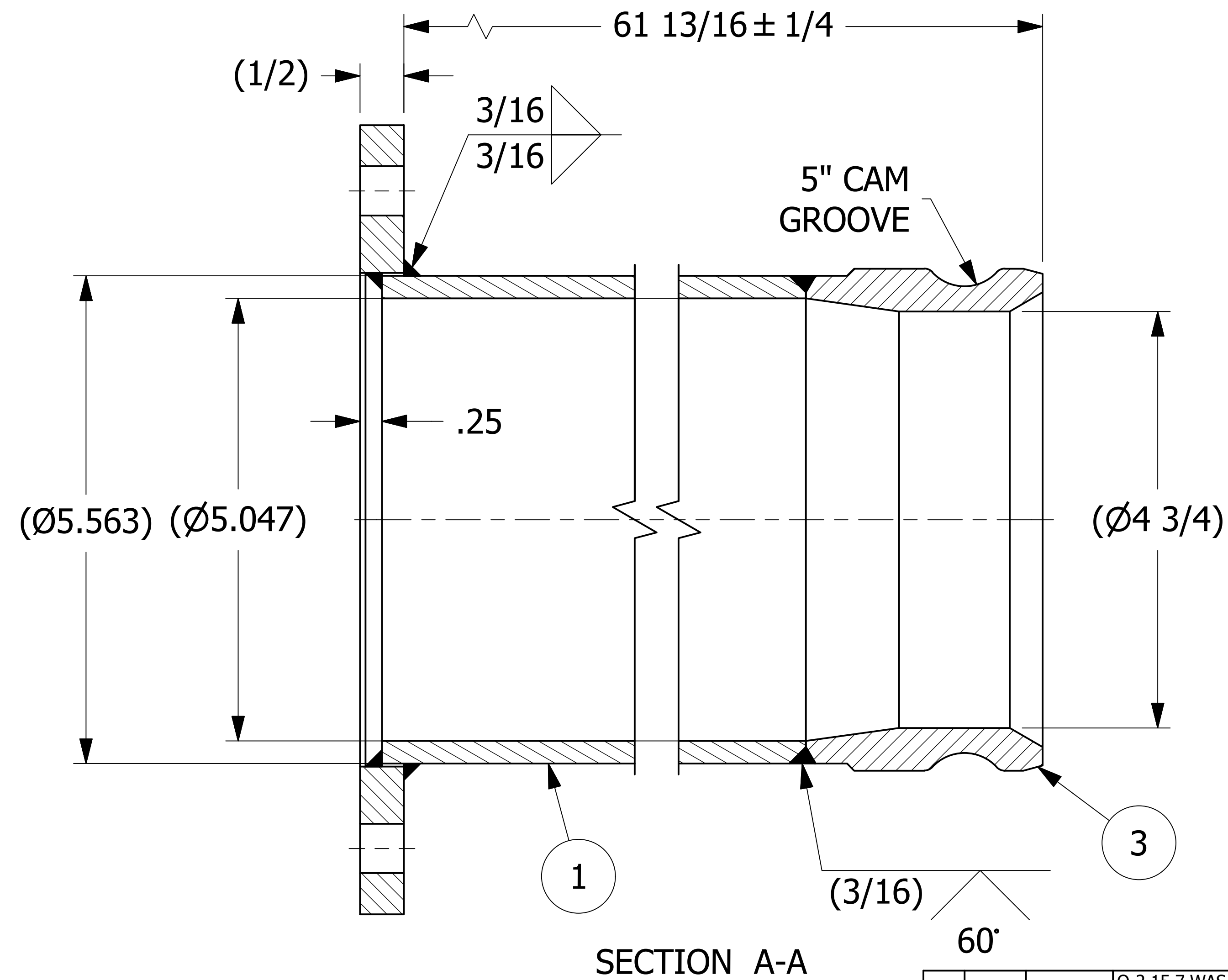
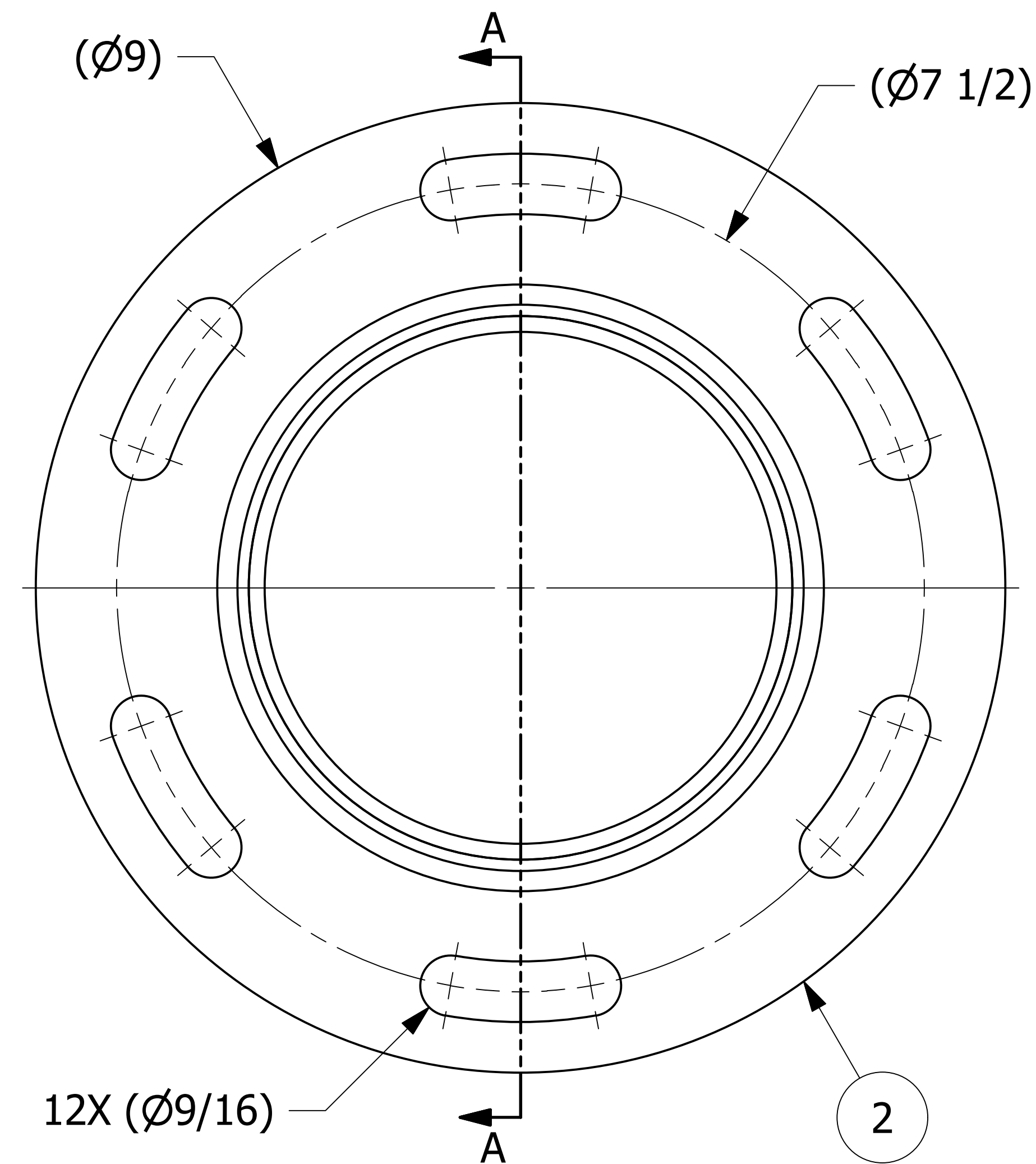


NO.	PART NAME	PART#	REQ'D	MATERIAL
1	PIPE 5"	C51857	1	6063-T6 ALUMINUM
2	ROUND FLANGE 5"	PD5ARF02	1	ASTM B209 6061-T62/T651
3	ADAPTER 5"	PDK5AWAB	1	ASTM B26 356.0-T6



- NOTES:**
- TEST PER Q-2.15.7.
  - SEE DOCUMENTS WPS-T01, WPS-P01 AND WPS-M08 FOR WELDING SPECIFICATIONS.
  - WELD ACCEPTANCE CRITERIA TO MEET DOCUMENT D-005.

REV	BY	DATE	DESCRIPTION
E	CHL	8/30/21	Q-2.15.7 WAS QAP4C-1, UPDATED WELD NOTES, ADDED D-005 NOTE, WELD SIZE WAS 1/4, REMOVED ALL AROUND WELD SYMBOL, REPLACED P5A40 W/C51857, DIM 61 13/16±1/4 WAS 61 13/16
D	CHL	6/11/13	REPLACED PDK5AWA W/PDK5AWAB UPDATED WELD SYMBOLS, REPLACED QAP4E-1 W/QAP4C-1, ADDED AWS D15.1
C	VD	12/16/10	REPLACED PDK5AWAB W/ PDK5AWA.
B	BRG	11/20/07	ADDED NOTE
A	CHL	3/26/07	ADDED PART TO SYSTEM

UNLESS OTHERWISE SPECIFIED DIMENSIONAL TOLERANCES	DRAWN BY:	CHL
FRACTIONAL: ±1/16	CHECKED BY:	ACC
X.XX: ±.03	PROTOTYPE DATE:	10/10/2001
X.XXX: ±.015	APPROVED FOR PRODUCTION BY:	ACC
ANGULAR: ±1°	PRODUCTION DATE:	3/26/2007
DEBURR ALL SHARP EDGES. ALL MACHINED SURFACES TO HAVE A 125 RMS FINISH. UNLESS NOTED OTHERWISE.	SIZE:	D
THIRD ANGLE PROJECTION	DRAWING #:	16273

**SALCO PRODUCTS, INC.**

PART NAME: **FLANGE ASSEMBLY 5"**

MATERIAL: **SEE BOM**

PROJECT #: **011001** SHEET #: **1 OF 1** SCALE: **1:1**

PART #: **PD5AKF01**