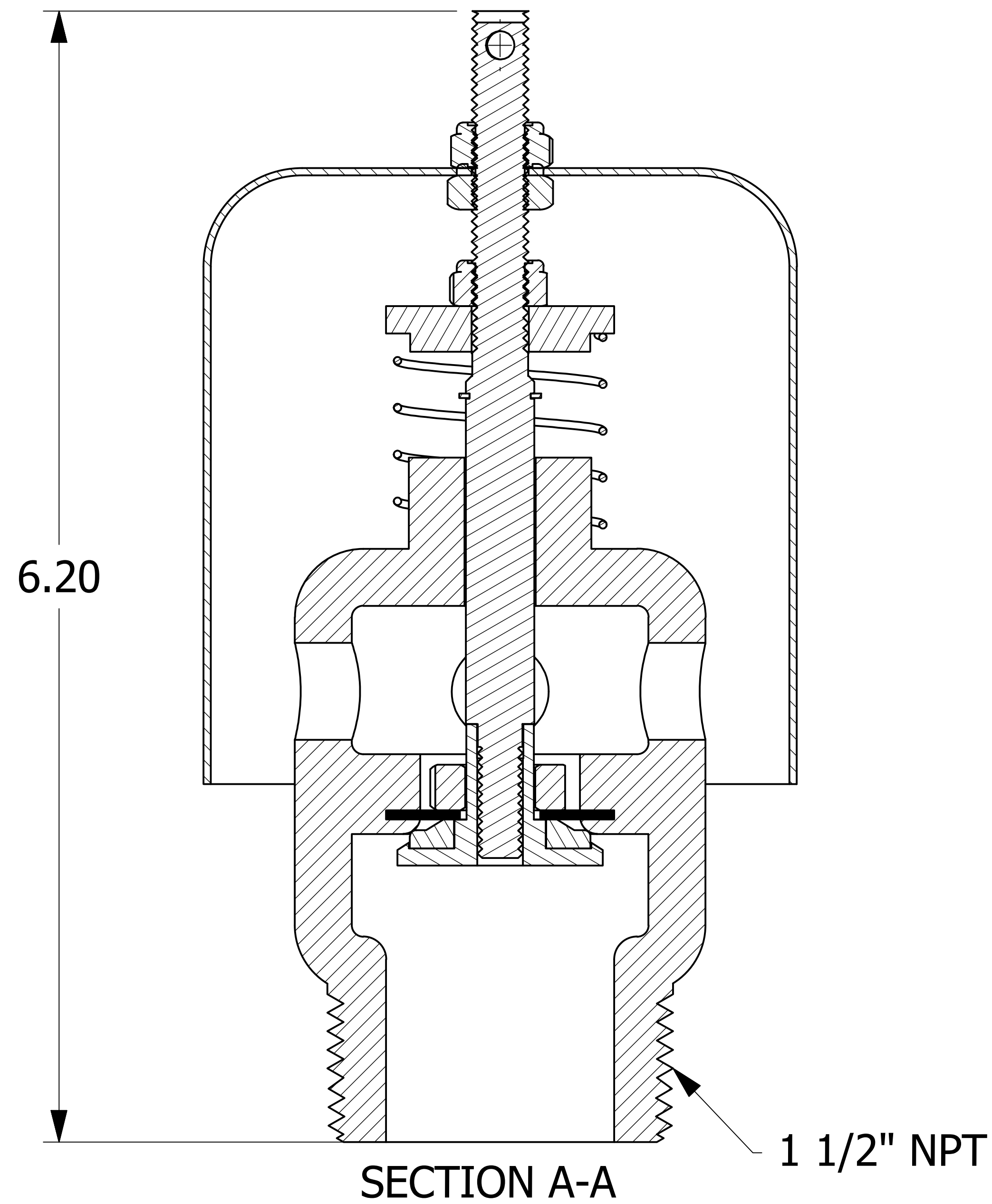
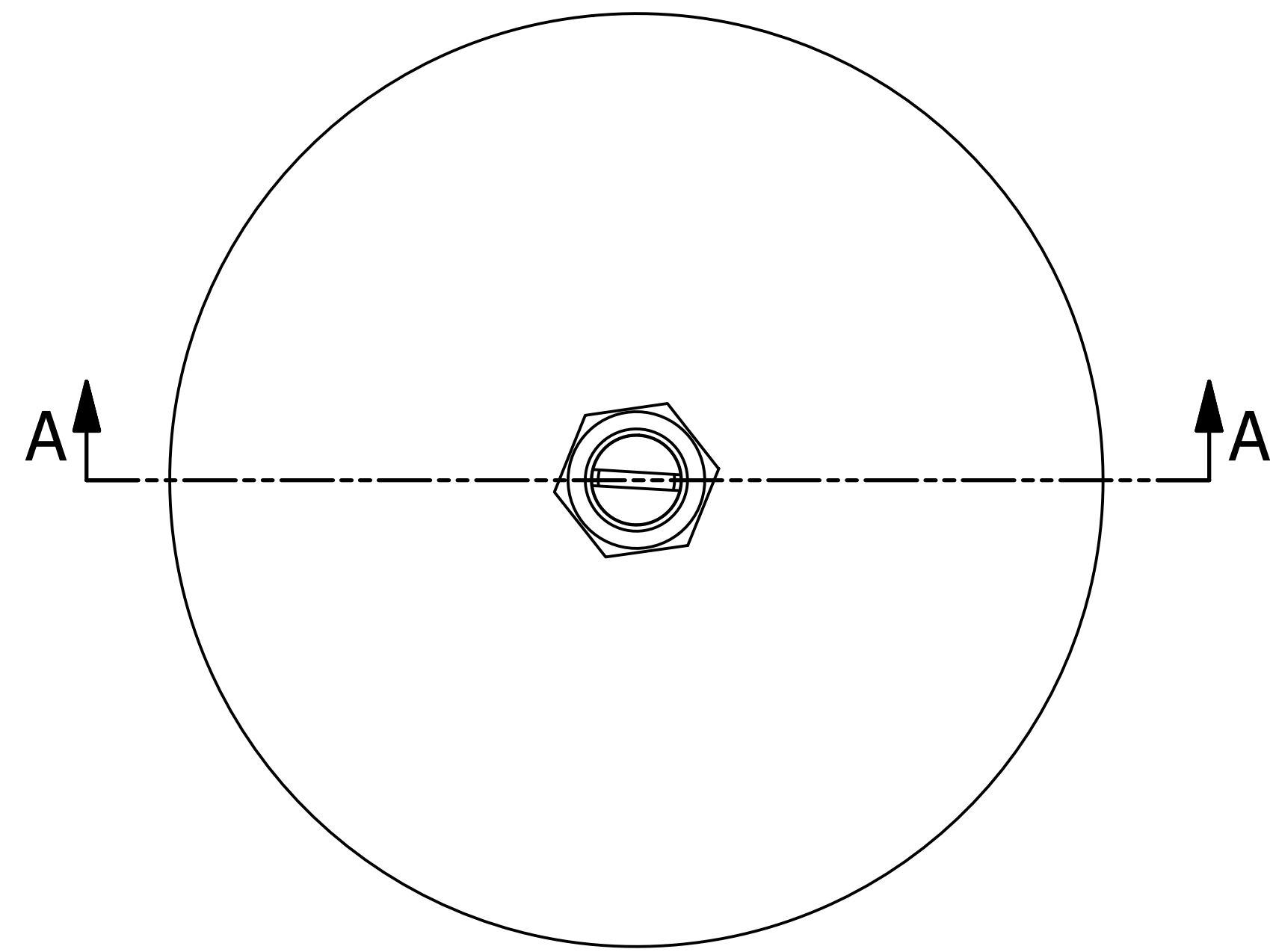
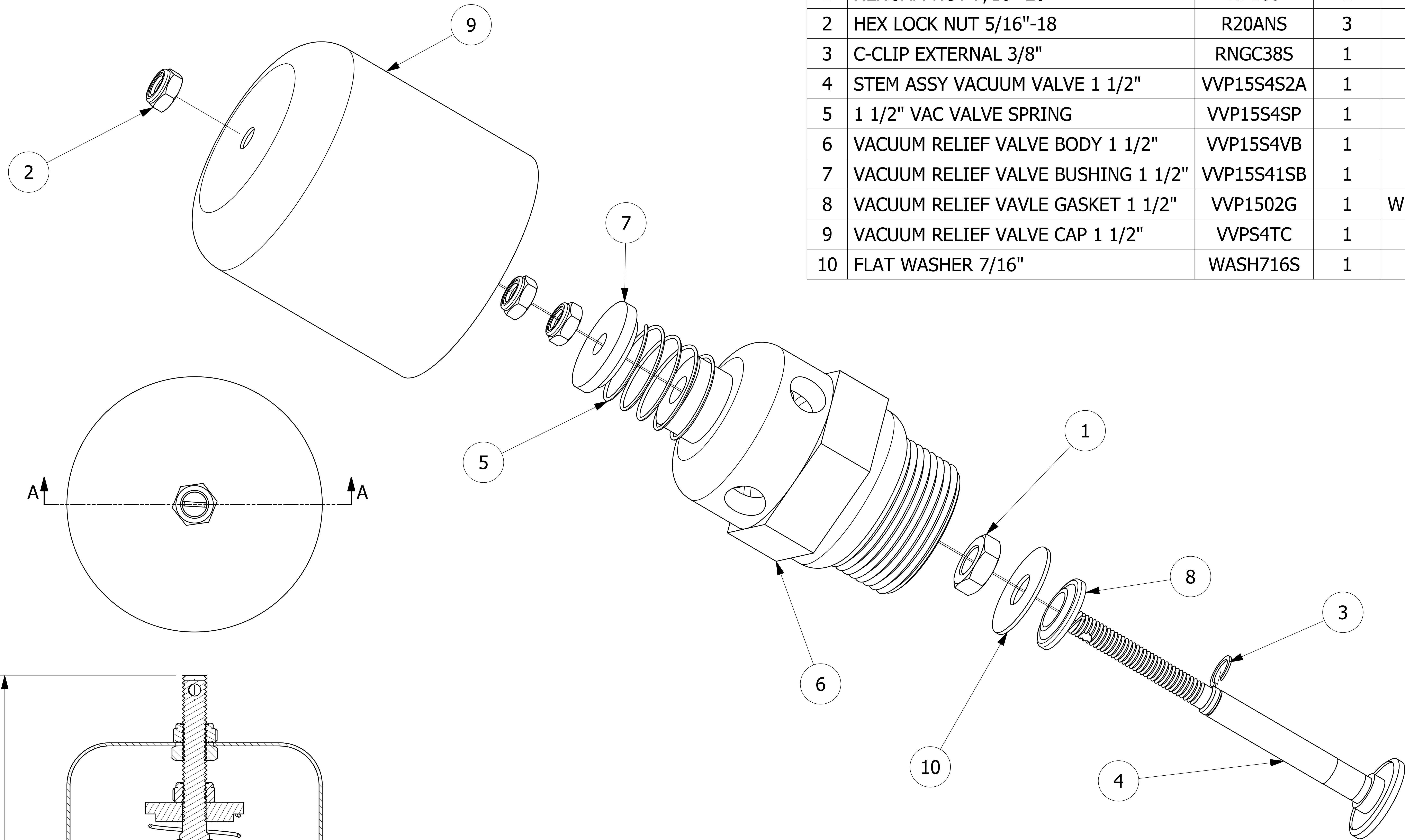


NO.	PART NAME	PART#	REQ'D	MATERIAL
1	HEX JAM NUT 7/16"-20	N716S	1	18-8 SS
2	HEX LOCK NUT 5/16"-18	R20ANS	3	18-8 SS
3	C-CLIP EXTERNAL 3/8"	RNGC38S	1	18-8 SS
4	STEM ASSY VACUUM VALVE 1 1/2"	VVP15S4S2A	1	303/18-8 SS
5	1 1/2" VAC VALVE SPRING	VVP15S4SP	1	304 SS
6	VACUUM RELIEF VALVE BODY 1 1/2"	VVP15S4VB	1	304 SS
7	VACUUM RELIEF VALVE BUSHING 1 1/2"	VVP15S41SB	1	303 SS
8	VACUUM RELIEF VALVE GASKET 1 1/2"	VVP1502G	1	WHITE FDA NITRILE
9	VACUUM RELIEF VALVE CAP 1 1/2"	VVPS4TC	1	304 SS
10	FLAT WASHER 7/16"	WASH716S	1	18-8 SS



B	WEB	6-26-18	UPDATED TO CURRENT DRAFTING STANDARDS, REPLACED VVP15S4SA WITH VVP15S4S2A
A	ACC	6-26-18	RELEASED FOR PRODUCTION
REV	BY	DATE	DESCRIPTION

UNLESS OTHERWISE SPECIFIED DIMENSIONAL TOLERANCES FRACTIONAL: ±1/16 X.XX: ±.03 X.XXX: ±.015 ANGULAR: ±1° DEBURR ALL SHARP EDGES. ALL MACHINED SURFACES TO HAVE A 125 RMS FINISH UNLESS NOTED OTHERWISE.	DRAWN BY: CHL
	CHECKED BY: ACC
	PROTOTYPE BY: CHL
	PROTOTYPE DATE: 4/6/2001
	APPROVED FOR PRODUCTION BY: ACC
THIRD ANGLE PROJECTION	PRODUCTION DATE: 4/6/2001

SALCO PRODUCTS, INC.			
PART NAME: VACUUM RELIEF VALVE 1 1/2" THREADED			
MATERIAL: SEE BOM			
PROJECT #:	000805	SHEET #:	1 OF 1
DRAWING #:	E15390	PART #:	VVP15S4102A
		SCALE:	2:1