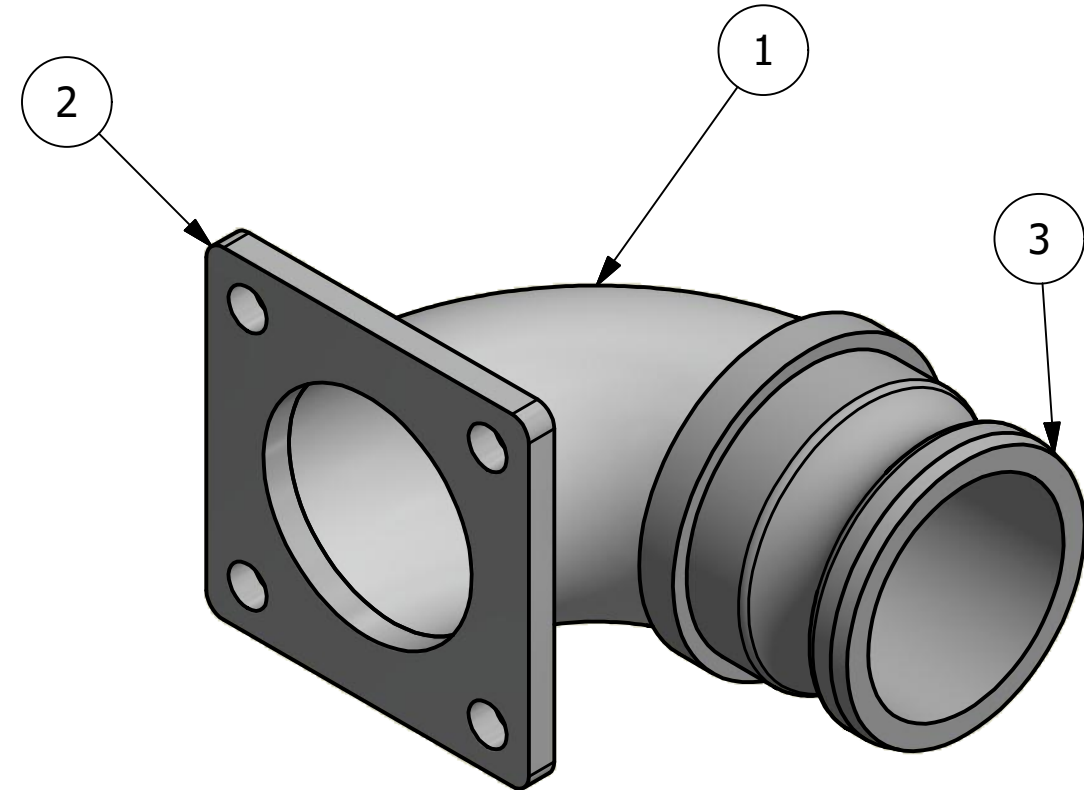
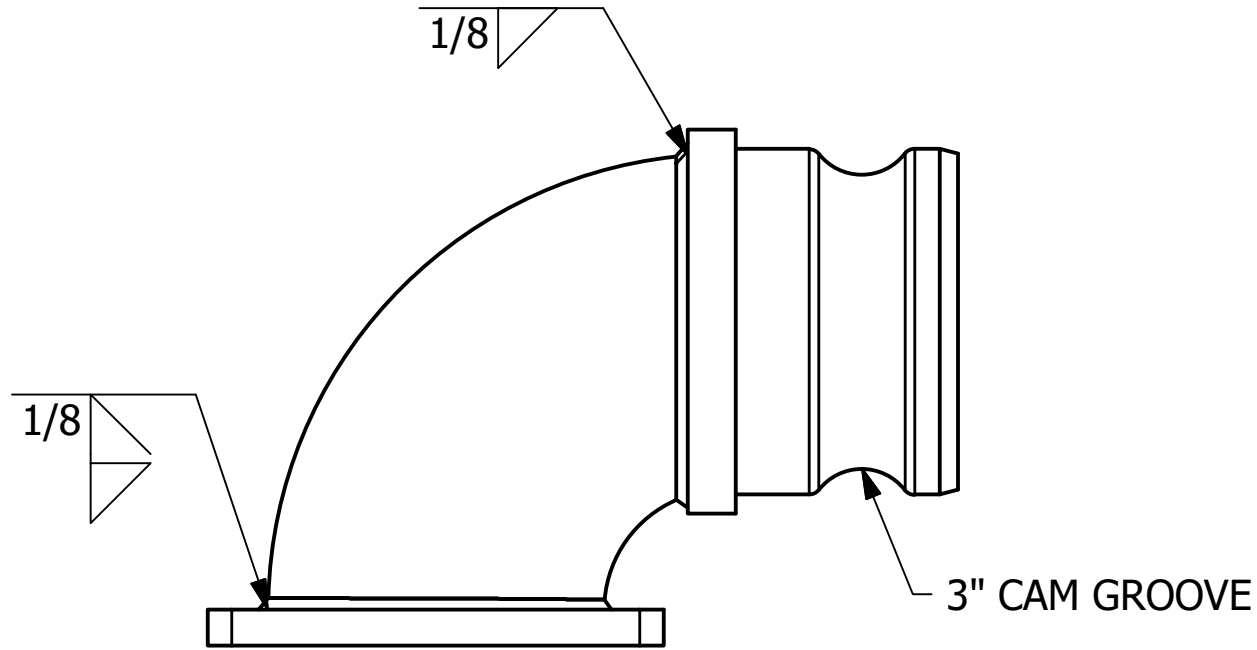
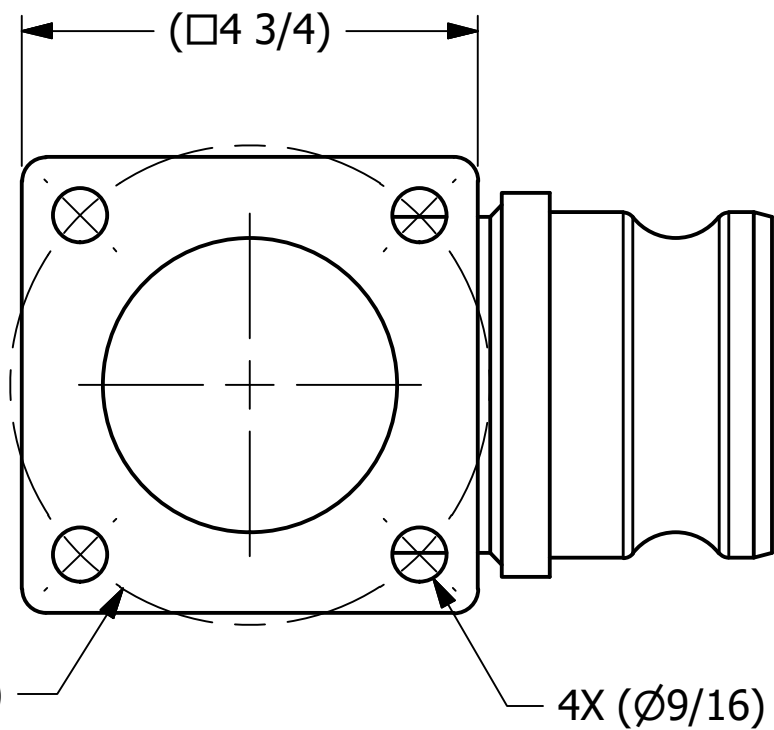


NO.	PART NAME	PART#	REQ'D	MATERIAL
1	ELBOW 3" X 90°	3A90SCH40ELB	1	ASTM B361 WP6061S
2	SQUARE FLANGE 3"	PD3ASF04	1	ASTM B209 6061-T62/T651
3	ADAPTER 3"	PT30AWSAL	1	ASTM B26 356.0-T6



ISOMETRIC VIEW



- NOTES:
- TEST PER Q-2.15.7.
 - SEE DOCUMENTS WPS-M09, WPS-P01, & WPS-T01 FOR WELDING PROCEDURE.
 - WELD ACCEPTANCE CRITERIA TO MEET DOCUMENT D-005.

REV	BY	DATE	DESCRIPTION
C	WEB	12/9/19	TEST PER Q-2.15.7 WAS MUST PASS QAP4C-1; UPDATED WELD PROCEDURE TO WPS-M09, WPS-P01, & WPS-T01; ADDED D-005 NOTE, UPDATED BOM MATERIALS; DRAWING # WAS B16446
B	WEB	10/10/17	REPLACED PD3ASF03 W/ PD3ASF04, UPDATED NOTES & DRAFTING STANDARDS
A	PJG	7/19/07	ADDED NOTE

UNLESS OTHERWISE SPECIFIED DIMENSIONAL TOLERANCES		DRAWN BY:	ACC
FRACTIONAL:	±1/16	CHECKED BY:	
X.XX:	±.03	PROTOTYPE DATE:	11/27/2001
X.XXX:	±.015	APPROVED FOR PRODUCTION BY:	ACC
ANGULAR:	±1°	PRODUCTION DATE:	11/27/2001
DEBURR ALL SHARP EDGES. ALL MACHINED SURFACES TO HAVE A 125 RMS FINISH UNLESS NOTED OTHERWISE.		SIZE:	B
THIRD ANGLE PROJECTION		DRAWING #:	49865

SALCO PRODUCTS, INC.

PART NAME: ELBOW 3" X 90°

MATERIAL: SEE BOM

PROJECT #: 010910 SHEET #: 1 OF 1 SCALE: 1:2

PART #: PD3A90F01A