

4

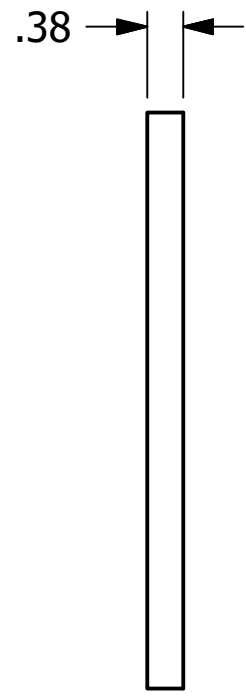
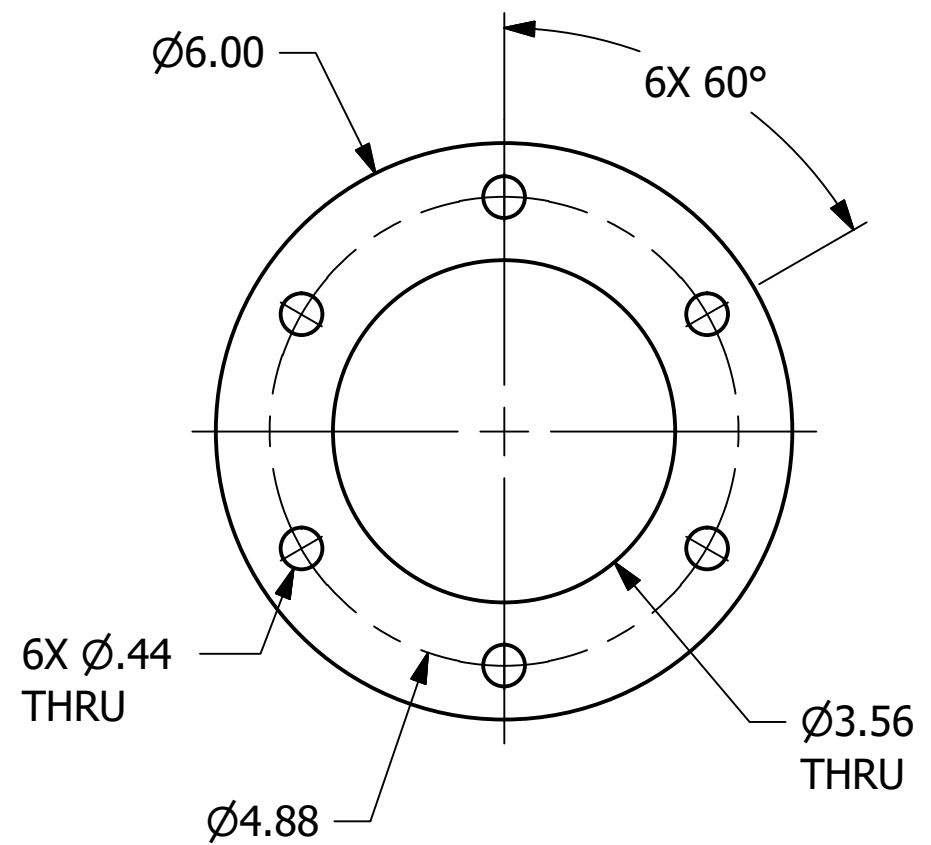
3

2

1

B

B



NOTE:
BREAK/DEBURR ALL SHARP CORNERS & EDGES.

REV	BY	DATE	DESCRIPTION
E	TAK	4/7/20	MATERIAL WAS ASTM A206 6061-T62/T651
D	WEB	11/27/19	UPDATED TO CURRENT STANDARDS; MATERIAL WAS 319,356 OR 6161-T6 ALUMINUM
C	BRG	3/11/09	REMOVED NOTE
B	BRG	2/17/09	ADDED SURFACE NOTE & HOLE DIMS
A	BRG	11/16/07	ADDED NOTE

UNLESS OTHERWISE SPECIFIED DIMENSIONAL TOLERANCES		DRAWN BY:	ACC
FRACTIONAL:	±1/16	CHECKED BY:	
X.XX:	±.03	PROTOTYPE DATE:	11/16/2001
X.XXX:	±.015	APPROVED FOR PRODUCTION BY:	ACC
ANGULAR:	±1°	PRODUCTION DATE:	11/16/2001
DEBURR ALL SHARP EDGES. ALL MACHINED SURFACES TO HAVE A 125 RMS FINISH UNLESS NOTED OTHERWISE.		SIZE:	B
THIRD ANGLE PROJECTION		DRAWING #:	16430



PART NAME: ROUND FLANGE 3"		
MATERIAL: ASTM B209 6061-T62/T651		
PROJECT #: 010910	SHEET #: 1 OF 1	SCALE: 1:2
PART #: PD3ARF		

4

3

2

1

A

A