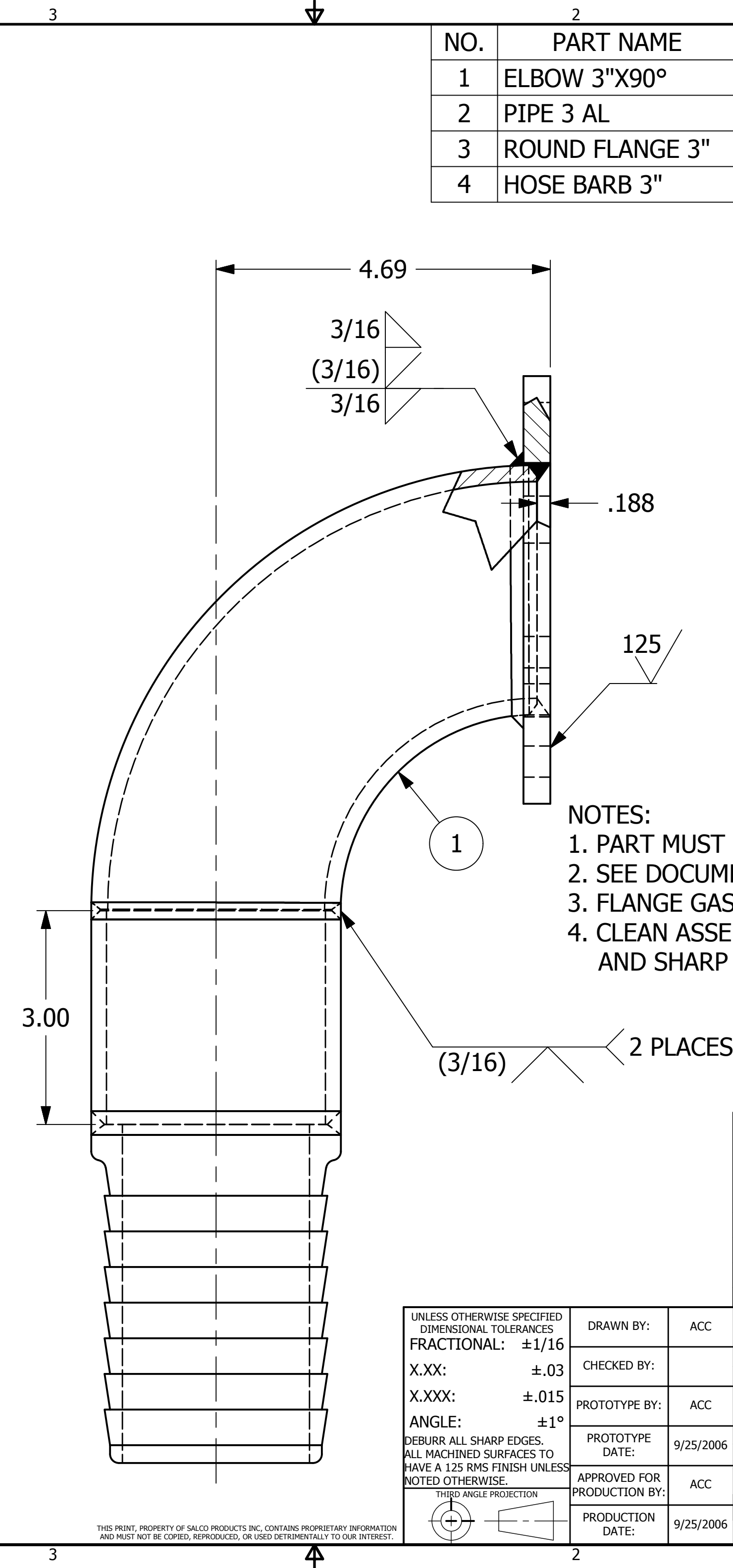
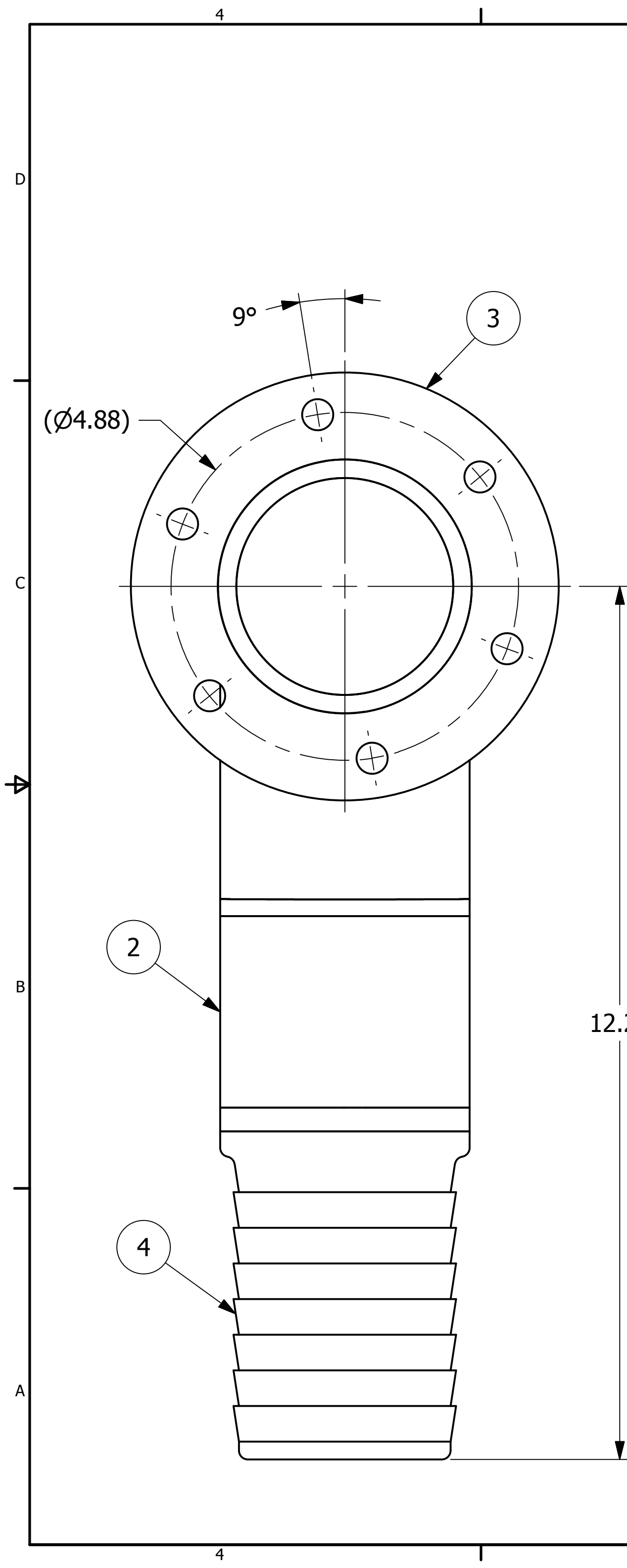


| NO. | PART NAME | PART# | REQ'D | MATERIAL |
|-----|-----------------|---------------|--------|----------|
| 1 | ELBOW 3"X90° | 3A90SCH40ELB2 | 1 | ALUMINUM |
| 2 | PIPE 3 AL | P3A40 | .25 FT | ALUMINUM |
| 3 | ROUND FLANGE 3" | PD3ARF | 1 | ALUMINUM |
| 4 | HOSE BARB 3" | B19470 | 1 | ALUMINUM |



- NOTES:
- PART MUST PASS Q-2.15.7.
 - SEE DOCUMENT DSS 13 FOR WELDING SPECIFICATIONS.
 - FLANGE GASKET SURFACE TO BE FREE OF WELD SPATTER.
 - CLEAN ASSEMBLY OF DEBRIS AND OIL. REMOVE ALL BURRS AND SHARP EDGES.

| REV | BY | DATE | DESCRIPTION |
|-----|-----|---------|---|
| D | WEB | 6-26-18 | 3/16" V-GROOVE WELDS WERE 1/8" BEVEL WELDS, ADDED GROOVE WELD TO FLANGE & SIZE WAS 1/8, UPDATED WELDING AND TESTING NOTES |
| C | BRG | 5-8-09 | ADDED SURFACE FINISH SYMBOL |
| B | PJG | 6-19-09 | ADDED NOTE |
| A | PJG | 6-19-07 | REVISED NOTES |

| | | |
|---|-----------------------------|-----------|
| UNLESS OTHERWISE SPECIFIED DIMENSIONAL TOLERANCES FRACTIONAL: $\pm 1/16$ X.XX: $\pm .03$ X.XXX: $\pm .015$ ANGLE: $\pm 1^\circ$ DEBURR ALL SHARP EDGES. ALL MACHINED SURFACES TO HAVE A 125 RMS FINISH UNLESS NOTED OTHERWISE. | DRAWN BY: | ACC |
| | CHECKED BY: | |
| | PROTOTYPE BY: | ACC |
| | PROTOTYPE DATE: | 9/25/2006 |
| | APPROVED FOR PRODUCTION BY: | ACC |
| | PRODUCTION DATE: | 9/25/2006 |

SALCO PRODUCTS, INC.

PART NAME: **FLANGED ELBOW 3" 90°**

MATERIAL: **SEE BOM**

PROJECT #: **040617** SHEET #: **1 OF 1** SCALE: **1:1**

DRAWING #: **C20685** PART #: **PD3A90FHB4**