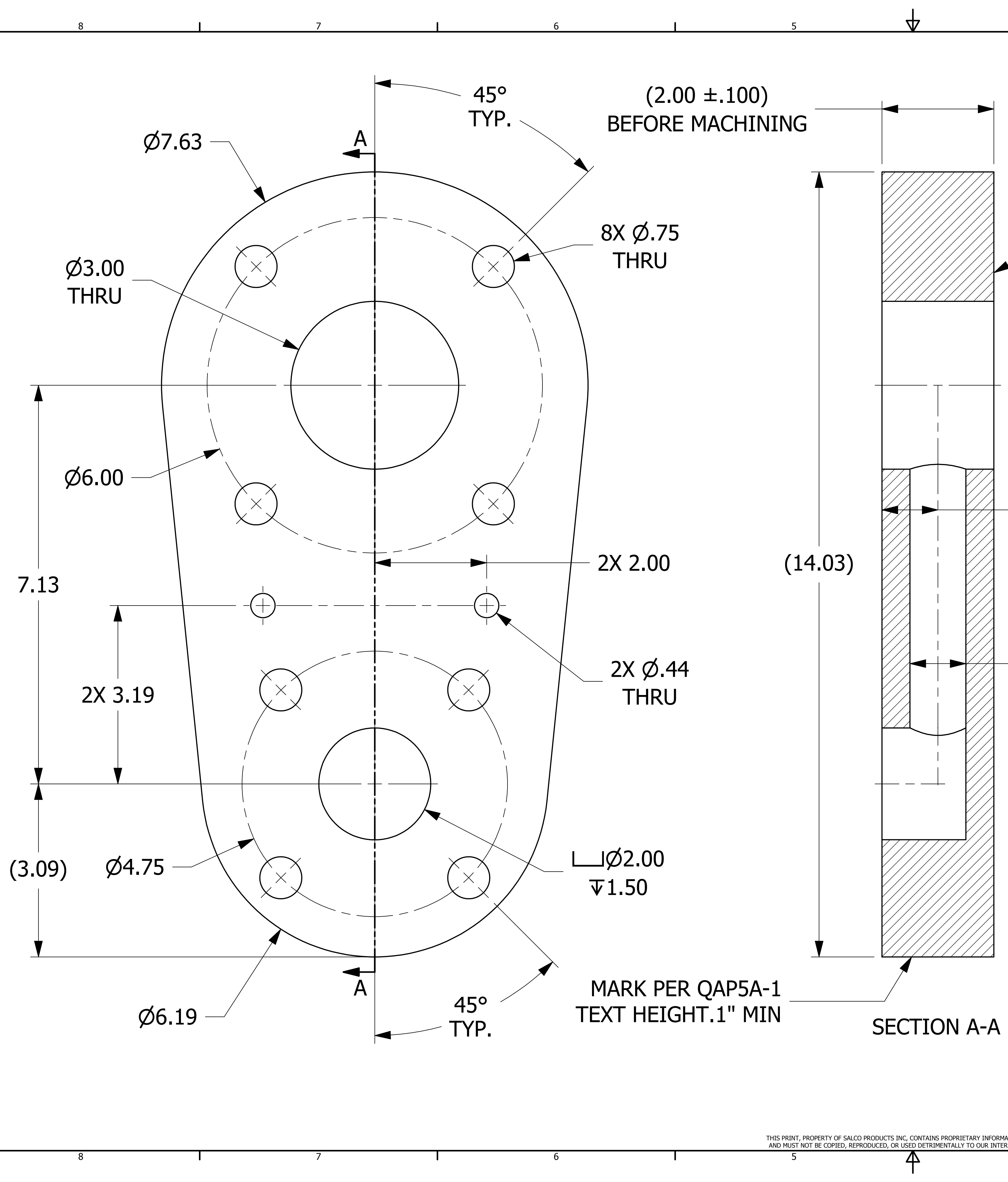


NO.	PART NAME	PART#	REQ'D	MATERIAL
1	SHEET 2"	SHT2UHR	.79 SQ FT	SALCO PE
2	PARALLEL INSTRUMENT TEE PLUG	HSPITPLG5	1	SALCO PE



(2.00 ±.100)
BEFORE MACHINING

SERRATED GASKET SURFACE
(3 PLACES)

- NOTES:
1. SEE DOCUMENT DSS 1 FOR MATERIAL SPECIFICATIONS.
 2. SEE DOCUMENT QAP5A-1 FOR MARKING PROCEDURE.
 3. SEE DOCUMENT DSS 3 FOR FRICTION WELDING SPECIFICATIONS.
 4. AAR APPROVAL #E-099017.

REV	BY	DATE	DESCRIPTION
E	WEB	4-1-14	ADDED ±.100 TOLERANCE, UPDATED NOTES
D	KHK	1-30-13	UPDATED TO CURRENT DRAFT STANDARDS, BOM, NOTE
C	REH	3-22-11	UPDATED DRAWING TO CURRENT STANDARDS FIXTURE HOLES WERE 3/8"
B	BRG	2-24-08	THROUGH HOLE WAS 0.88
A	ACC	1-6-03	ADDED PART INTO THE SYSTEM

UNLESS OTHERWISE SPECIFIED DIMENSIONAL TOLERANCES	DRAWN BY:	CHL
FRACTIONAL: ±1/16	CHECKED BY:	ACC
X.XX: ±.03	PROTOTYPE BY:	CHL
X.XXX: ±.015	PROTOTYPE DATE:	3/22/2011
ANGULAR: ±1°	APPROVED FOR PRODUCTION BY:	ACC
DEBURR ALL SHARP EDGES. ALL MACHINED SURFACES TO HAVE A 125 RMS FINISH UNLESS NOTED OTHERWISE.	PRODUCTION DATE:	1/6/2004
THIRD ANGLE PROJECTION		

SALCO PRODUCTS, INC.

PART NAME: **PARALLEL INSTRUMENT TEE 3"X2"**

MATERIAL: **SEE BOM/NOTE**

PROJECT #: **030708** SHEET #: **1 OF 1** SCALE: **1:1**

DRAWING #: **D18563** PART #: **HSPIT3X2**

THIS PRINT, PROPERTY OF SALCO PRODUCTS INC. CONTAINS PROPRIETARY INFORMATION AND MUST NOT BE COPIED, REPRODUCED, OR USED DETRIMENTALLY TO OUR INTEREST.