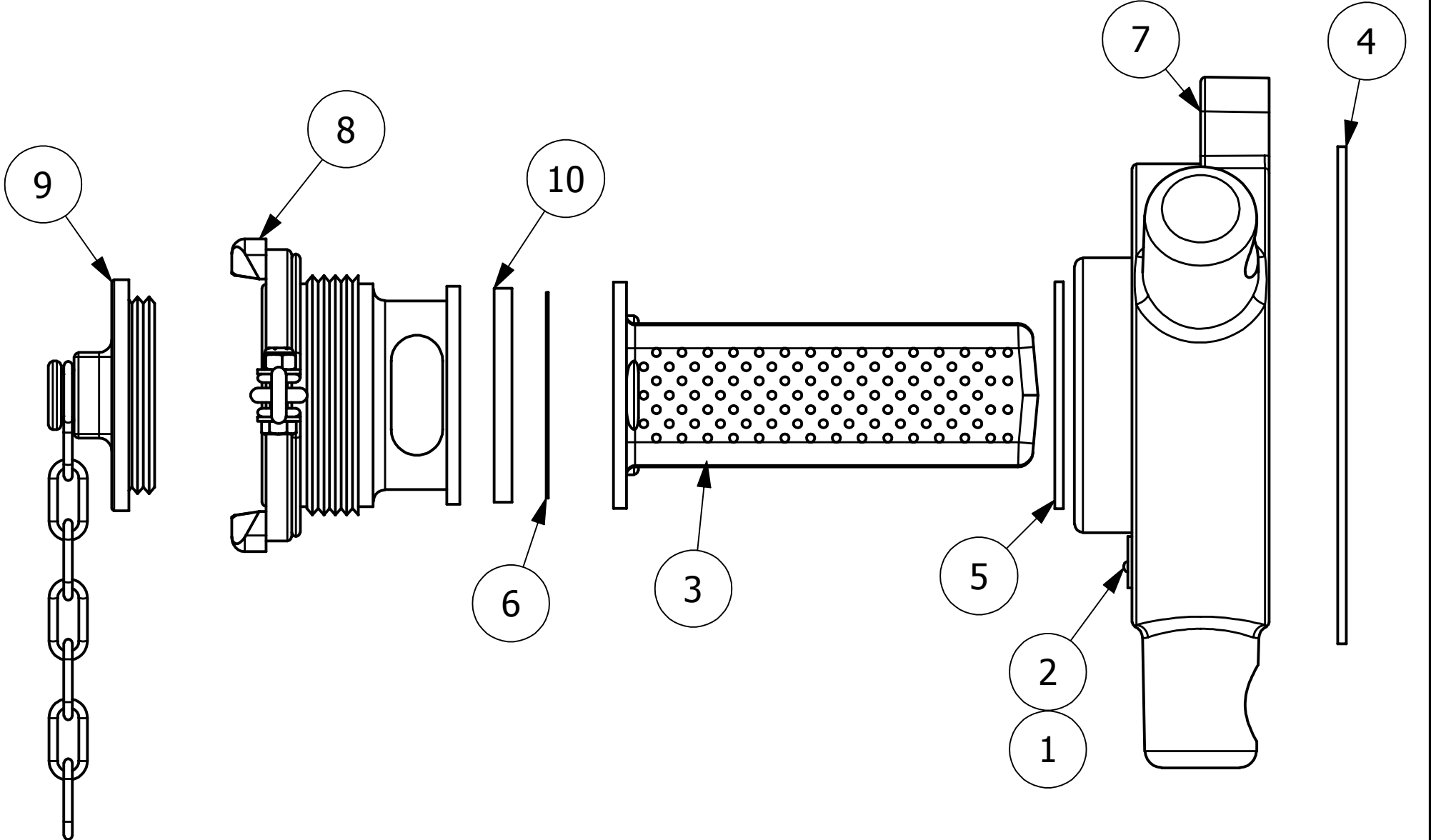


NO.	PART NAME	PART#	REQ'D	MATERIAL
1	ID PLATE 3" X 3/4"	A15152	.5	ALUMINUM
2	DRIVE SCREW TYPE U #2 X 1/8"	DR218	2	18-8 SS
3	SURGE PROTECTOR	DSP3313SS6	1	316L SS
4	QUICK INSPECT FLANGE GASKET	FG550V	1	BLACK VITON A
5	QI RETAINER GASKET	QI261G6	1	BLACK VITON A
6	QI RUPTURE DISK GASKET	QI261RDG6	1	BLACK VITON A
7	QUICK INSPECT BODY	QI261S6B	1	316 SS
8	QUICK INSPECT RETAINER DISC	QI261S6RDSA	1	316 SS
9	QUICK INSPECT CAP ASSEMBLY	QI261S6TCA	1	316 SS
10	RUPTURE DISC (SOLD SEPARATELY)			



- NOTES:
- 1. CUSTOMERS RESPONSIBILITY FOR COMPATIBILITY OF COMMODITY.
 - 2. AAR APPROVAL # PRD-162102.
 - 3. SEE DOCUMENT QAP5A-1 FOR MARKING PROCEDURE.
 - 4. FASTEN ID PLATE WITH DRIVE SCREWS.

C	JG	2-9-17	AAR APPROVAL # WAS SRD-063000; UPDATED VIEWS, NOTES; ADDED A15152, DR218
B	REH	2-17-11	UPDATED NOTES
A	REH	7-20-10	ADDED PART INTO SYSTEM
REV	BY	DATE	DESCRIPTION

UNLESS OTHERWISE SPECIFIED DIMENSIONAL TOLERANCES FRACTIONAL: $\pm 1/16$ X.XX: $\pm .03$ X.XXX: $\pm .015$ ANGLE: $\pm 1^\circ$ DEBURR ALL SHARP EDGES. ALL MACHINED SURFACES TO HAVE A 125 RMS FINISH UNLESS NOTED OTHERWISE. THIRD ANGLE PROJECTION	DRAWN BY:	CHL
	CHECKED BY:	PJG
	PROTOTYPE BY:	CHL
	PROTOTYPE DATE:	6/26/2007
	APPROVED FOR PRODUCTION BY:	PJG
	PRODUCTION DATE:	7/20/2010

SALCO PRODUCTS, INC.			
PART NAME: QUICK INSPECT SAFETY VENT			
MATERIAL: SEE BOM/NOTE			
PROJECT #:	WAG0442	SHEET #:	1 OF 1
DRAWING #:	C23766	PART #:	QI261S606A
		SCALE:	1:2