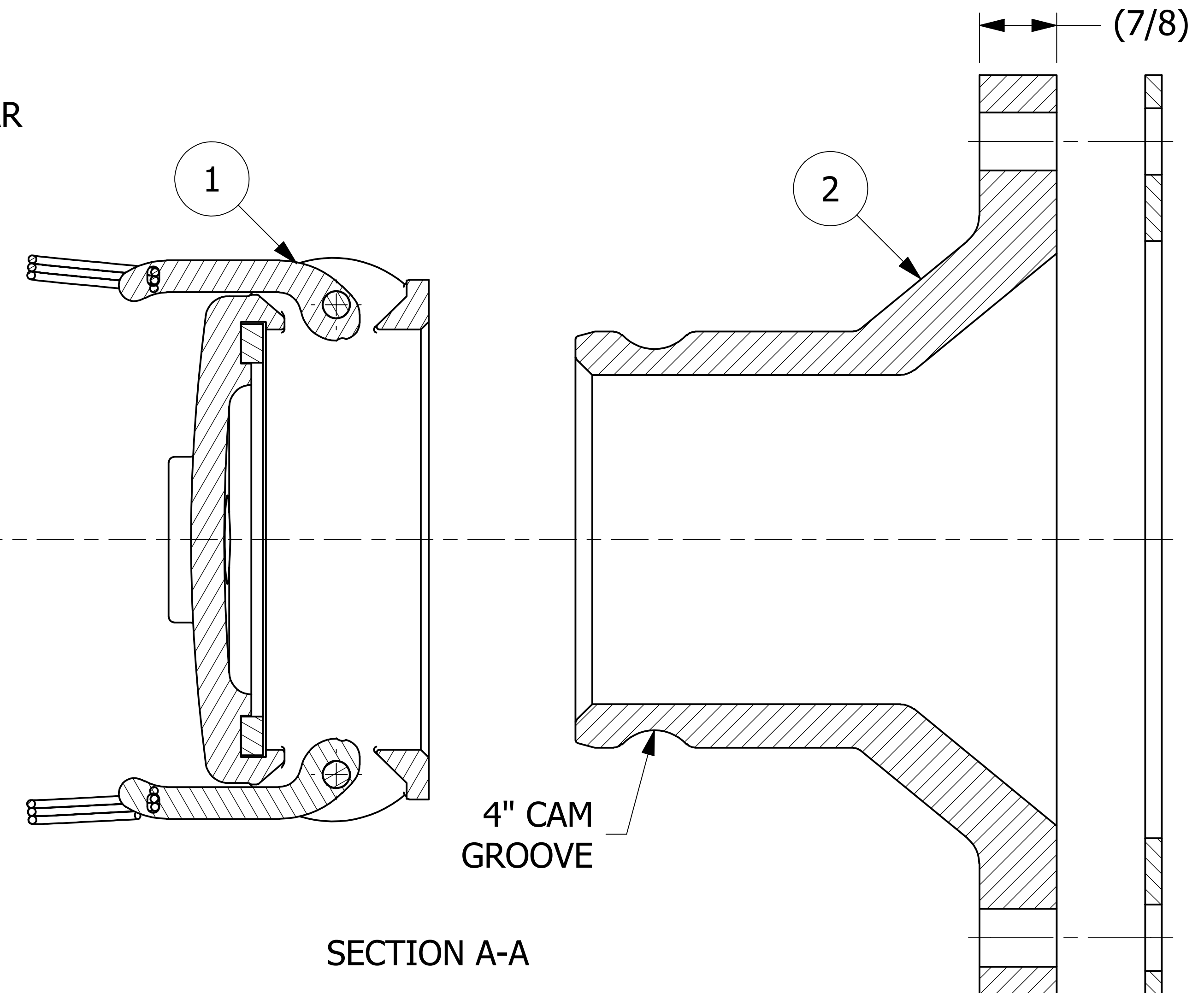
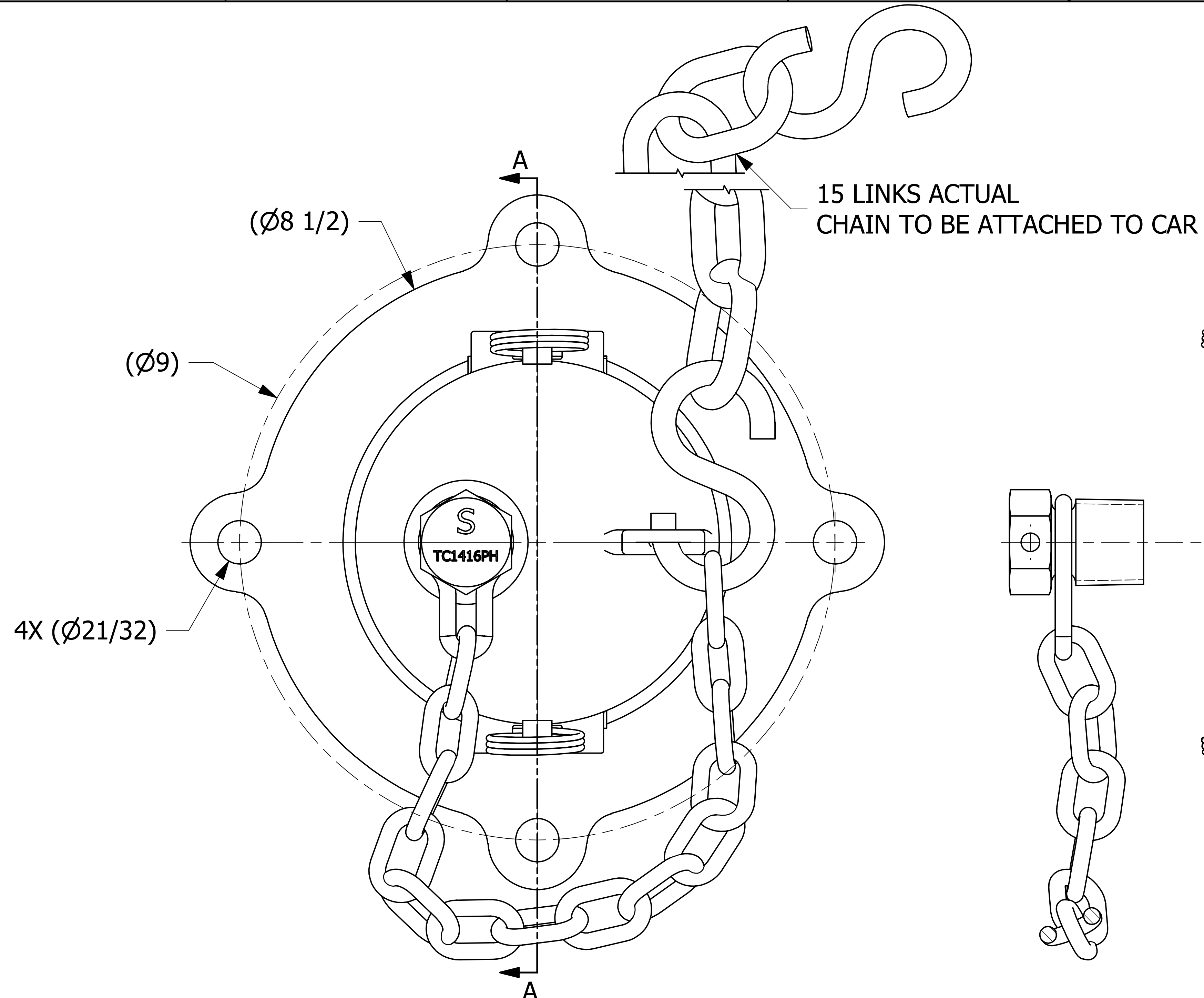


NO.	PART NAME	PART#	REQ'D	MATERIAL
1	QUICK CONNECT CAP 4" KAMMED	K4SDC2A	1	316 SS
2	QUICK CONNECT ADAPTER 4" FLANGED	K4SWF2	1	316 SS



- NOTES:**
1. APPROXIMATE HEIGHT = 7 7/8".
 2. AAR APPROVAL# E-139514.
 3. THIS ASSEMBLY IS NOT DOT APPROVED AND CAN BE USED ONLY ON AAR STENCILED CARS.
 4. QUICK DISCONNECT MEETS A-A-59326D.
 5. CASTINGS ARE 316 S.S. GRADE CF-8M ASTM# A743.
 6. GASKETS ARE WHITE FDA NITRILE.
 7. FITS JAMESBURY 6" WAFER SPHERE VALVE (9.00" B.C.).

H	RJP	12-20-13	AAR APPROVAL # WAS E-039015, MIL SPEC WAS MIL-C-27487G
G	CHL	1-12-04	AAR APPROVAL # WAS E-939034
F	FOD	3-6-00	CHANGED PART # WAS K4SWFA AND UPDATED BOM WITH SUBASSEMBLIES
E	ACC	7-22-99	REVISED NOTES
D	FOD	11-11-98	CHANGED GASKET WAS SSDCG
C	MRC	9-3-97	S-HOOK WAS 5/16" DIAMETER
B	MRC	6-17-97	CHAIN DIAMETER WAS 9/32"
A	ACC	11-14-96	WAS TC1416PA
REV	BY	DATE	DESCRIPTION

UNLESS OTHERWISE SPECIFIED DIMENSIONAL TOLERANCES FRACTIONAL: ±1/16 X.XX: ±.03 X.XXX: ±.015 ANGULAR: ±1° DEBURR ALL SHARP EDGES. ALL MACHINED SURFACES TO HAVE A 125 RMS FINISH UNLESS NOTED OTHERWISE. THIRD ANGLE PROJECTION	DRAWN BY:	BRW
	CHECKED BY:	SAB
	PROTOTYPE BY:	BRW
	PROTOTYPE DATE:	1/26/1996
	APPROVED FOR PRODUCTION BY:	BRW
	PRODUCTION DATE:	1/26/1996

SALCO PRODUCTS, INC.

QUICK CONNECT 4" FLANGED

MATERIAL: **SEE BOM**

PROJECT #: **980220** SHEET #: **1 OF 1** SCALE: **1:1**

DRAWING #: **D7871** PART #: **K4SWF2A**