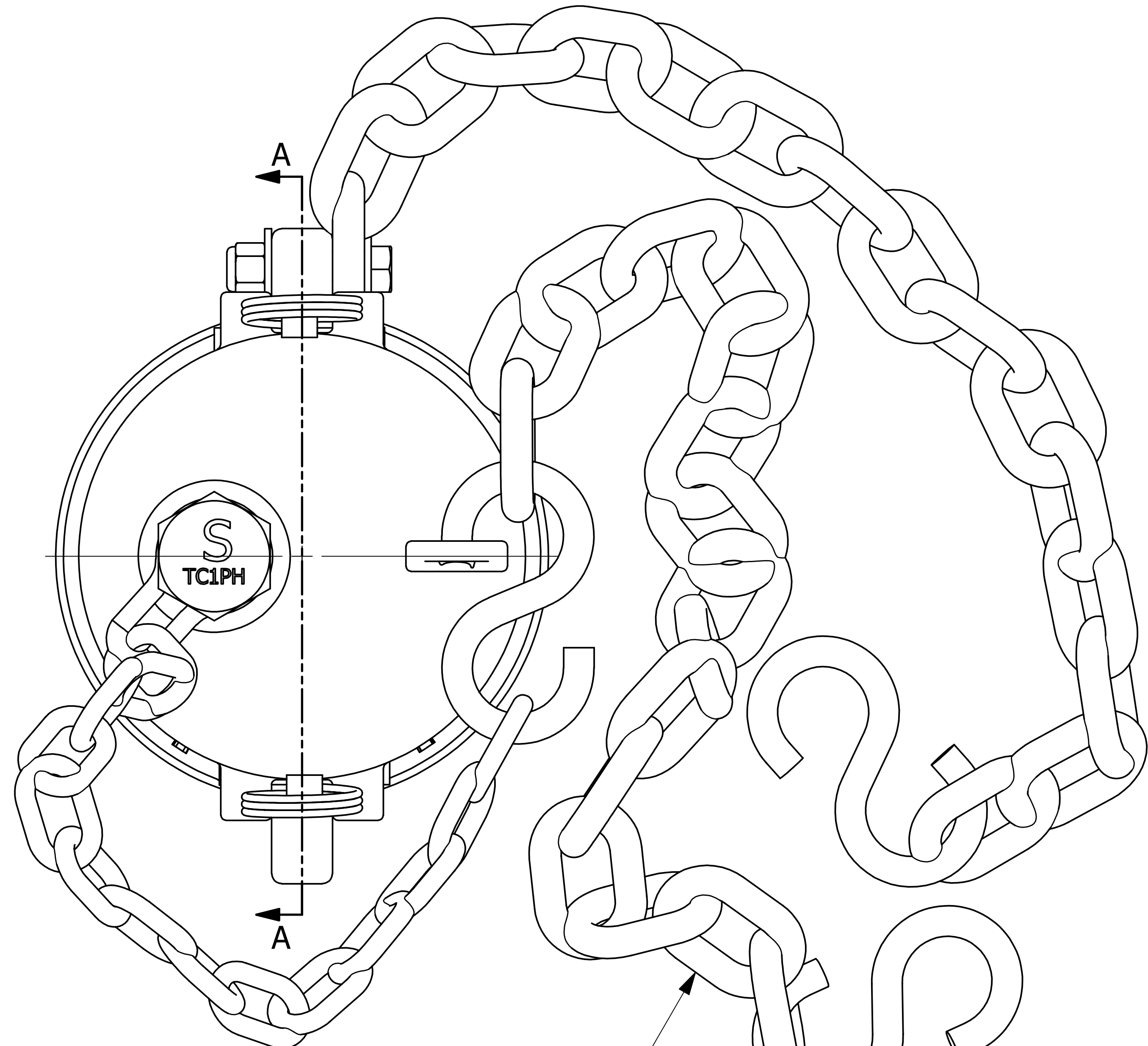
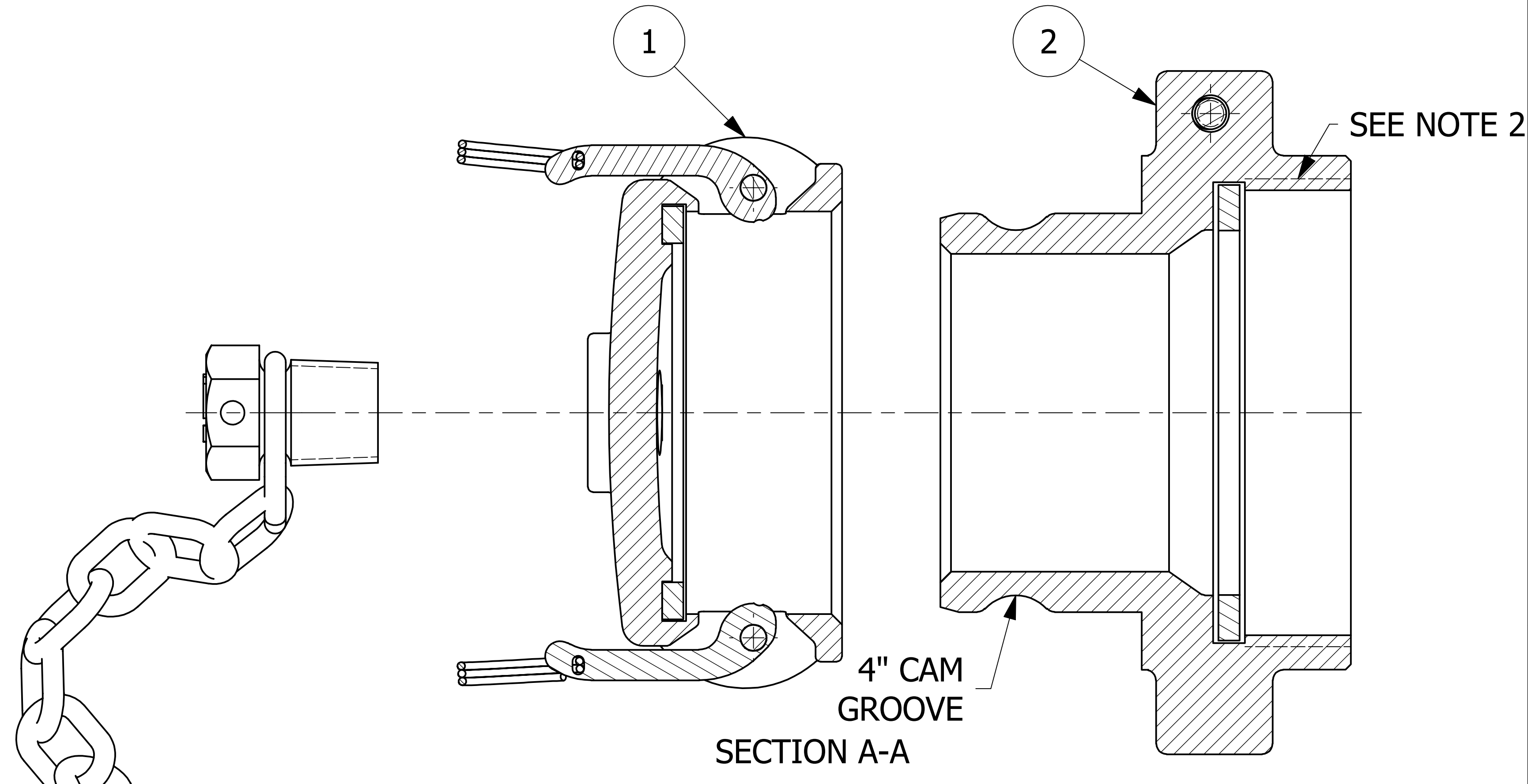


NO.	PART NAME	PART#	REQ'D	MATERIAL
1	QUICK CONNECT CAP 4" KAMMED	K4IDC1A	1	DI
2	QUICK CONNECT ADAPTER 4" THREAD ON	K4IA1A	1	DI



15 LINKS ACTUAL
CHAIN TO BE ATTACHED TO CAR



- NOTES:
- APPROXIMATE HEIGHT = 6 1/2".
 - 5 1/4" - 4 UN 2B THREADS CONFORM TO ANSI B1.1 STANDARD AND FIGURE E18 FROM AAR TANK CAR MANUAL.
 - AAR APPROVAL # E-139514.
 - THIS ASSEMBLY IS NOT DOT APPROVED AND CAN BE USED ONLY ON AAR STENCILED CARS.
 - QUICK DISCONNECT MEETS A-A-59326D.
 - CASTINGS ARE DUCTILE IRON (FERRITIZED/ANNEALED) AND MEETS ASTM A395 GRADE 60-40-18 REQUIREMENTS.
 - GASKETS ARE BLACK NITRILE.
 - SPRAY WITH USDA APPROVED WHITE MINERAL OIL OR VEGETABLE OIL AS A RUST INHIBITOR.

Q	RJP	10-31-13	AAR APPROVAL # WAS E-039015, MIL SPEC WAS MIL-C-27487G
P	ACC	8-29-03	OLD APPROVAL # WAS E939034
O	FOD	3-6-00	CHANGED PART # WAS K4IU1A AND UPDATED B.O.M. WITH SUBASSEMBLIES
N	ACC	6-14-99	CHAIN WAS CS Z/P, UPDATED NOTES
M	MRC	9-3-97	S-HOOK WAS 5/16" DIAMETER
L	MRC	7-8-97	CHAIN DIAMETER IS 3/8"
K	MRC	6-23-97	CHAIN DIAMETER WAS 1/4"
J	ACC	11-13-96	WAS TC1PA
REV	BY	DATE	DESCRIPTION

UNLESS OTHERWISE SPECIFIED DIMENSIONAL TOLERANCES	DRAWN BY:	BJC
FRACTIONAL: ±1/16	CHECKED BY:	
X.XX: ±.03	PROTOTYPE BY:	BJC
X.XXX: ±.015	PROTOTYPE DATE:	3/18/1995
ANGULAR: ±1°	APPROVED FOR PRODUCTION BY:	ACC
DEBURR ALL SHARP EDGES. ALL MACHINED SURFACES TO HAVE A 125 RMS FINISH UNLESS NOTED OTHERWISE.	PRODUCTION DATE:	3/18/1995
THIRD ANGLE PROJECTION		

SALCO PRODUCTS, INC.

PART NAME: **QUICK CONNECT 4" THREAD ON**

MATERIAL: **SEE BOM**

PROJECT #: SHEET #: **1 OF 1** SCALE: **1:1**

DRAWING #: **D5509** PART #: **K4IU1A**