

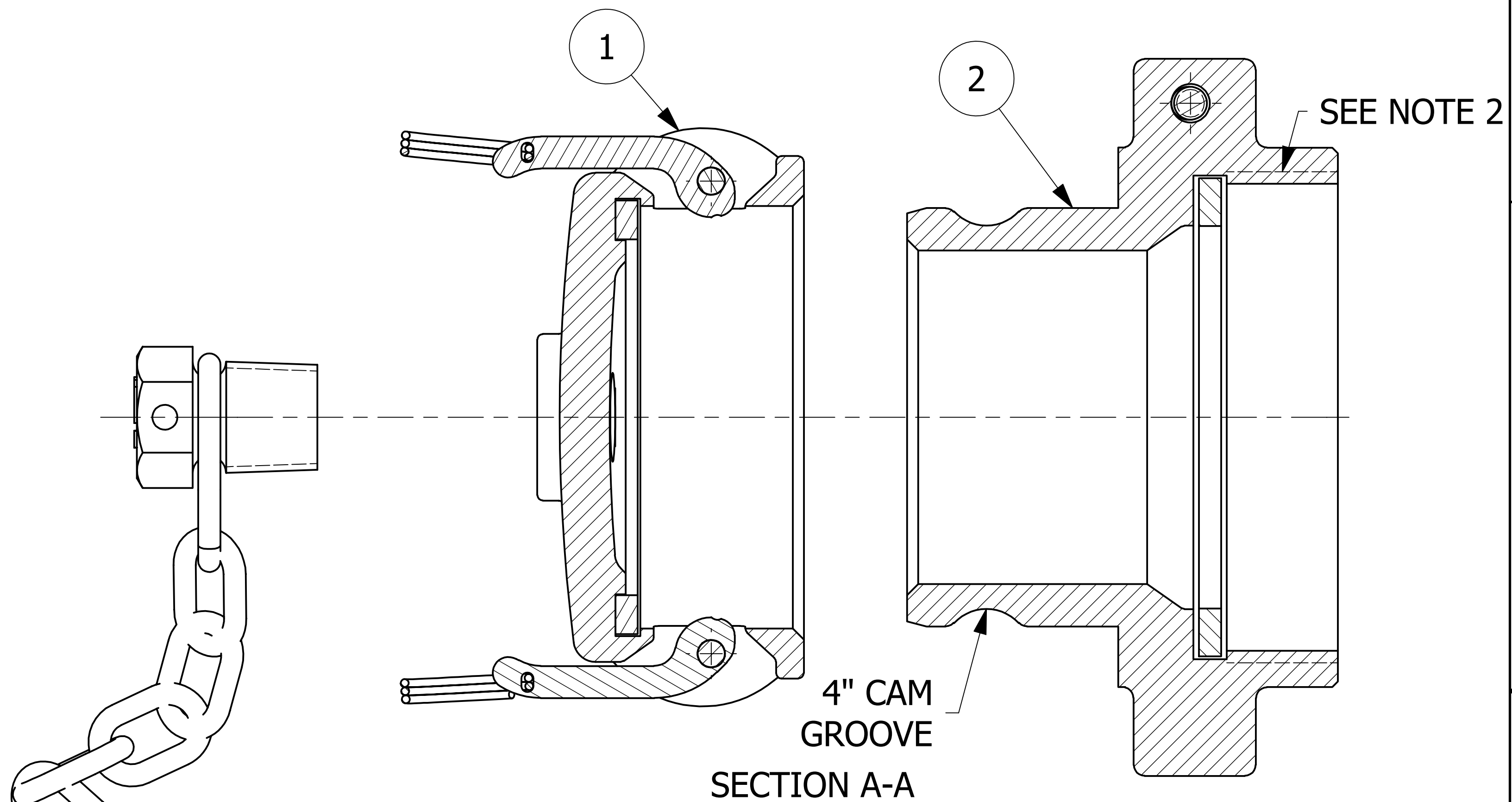
15 LINKS ACTUAL
CHAIN TO BE ATTACHED TO CAR

NOTES:

1. APPROXIMATE HEIGHT = 6 1/2".
2. 5 1/4" - 4 UN 2B THREADS CONFORM TO ANSI B1.1 STANDARD AND FIGURE E18 FROM AAR TANK CAR MANUAL.
3. AAR APPROVAL # E-139514.
4. THIS ASSEMBLY IS NOT DOT APPROVED AND CAN BE USED ONLY ON AAR STENCILED CARS.
5. QUICK DISCONNECT MEETS A-A-59326D.
6. CASTINGS ARE DUCTILE IRON (FERRITIZED/ANNEALED) AND MEETS ASTM A395 GRADE 60-40-18 REQUIREMENTS.
7. GASKETS ARE FDA WHITE NITRILE.
8. SPRAY WITH USDA APPROVED WHITE MINERAL OIL OR VEGETABLE OIL AS A RUST INHIBITOR.


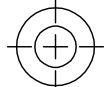
THIS PRINT, PROPERTY OF SALCO PRODUCTS INC. CONTAINS PROPRIETARY INFORMATION AND MUST NOT BE COPIED, REPRODUCED, OR USED DETRIMENTALLY TO OUR INTEREST.

NO.	PART NAME	PART #	REQ'D	MATERIAL
1	QUICK CONNECT CAP 4" KAMMED	K4IDC2A	1	DI
2	QUICK CONNECT ADAPTER 4" THREAD ON	K4IA2A	1	DI



4" CAM
GROOVE
SECTION A-A

D	RJP	10-31-13	AAR APPROVAL # WAS E-039015, MIL SPEC WAS MIL-C-27487G
C	ACC	1-5-04	AAR APPROVAL # WAS E-939034
B	FOD	3-6-00	UPDATED B.O.M. WITH SUBASSEMBLIES
A	ACC	6-14-99	CHAIN WAS CS Z/P, UPDATED NOTES
REV	BY	DATE	DESCRIPTION

UNLESS OTHERWISE SPECIFIED DIMENSIONAL TOLERANCES FRACTIONAL: ±1/16 X.XX: ±.03 X.XXX: ±.015 ANGULAR: ±1° DEBURR ALL SHARP EDGES. ALL MACHINED SURFACES TO HAVE A 125 RMS FINISH UNLESS NOTED OTHERWISE. THIRD ANGLE PROJECTION	DRAWN BY:	FOD	 SALCO PRODUCTS, INC.	
	CHECKED BY:	SAB		
	PROTOTYPE BY:	FOD	QUICK CONNECT 4" THREAD ON	
	PROTOTYPE DATE:	8/17/1998	MATERIAL: SEE BOM	
	APPROVED FOR PRODUCTION BY:	SAB	PROJECT #: 980813	SHEET #: 1 OF 1
	PRODUCTION DATE:	8/17/1998	DRAWING #: D9617	PART #: K4IU2A