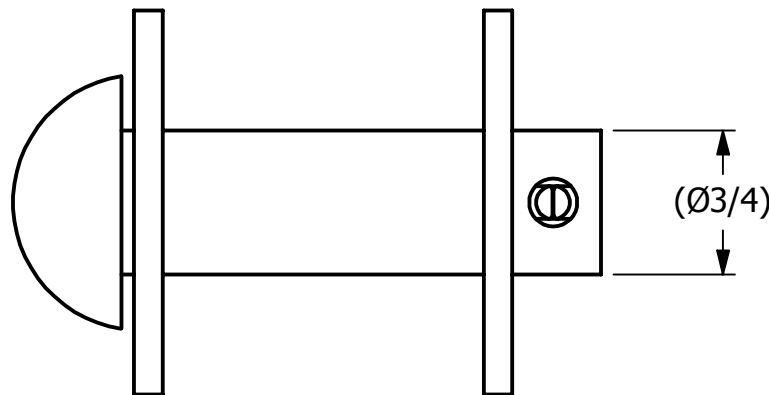
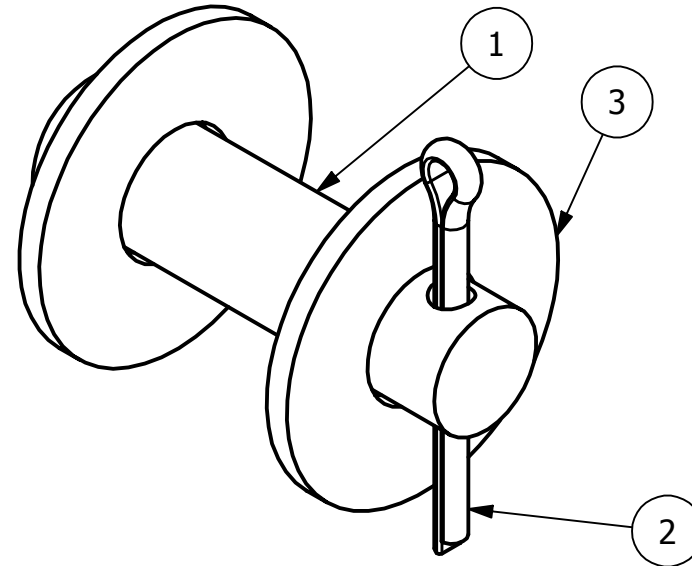
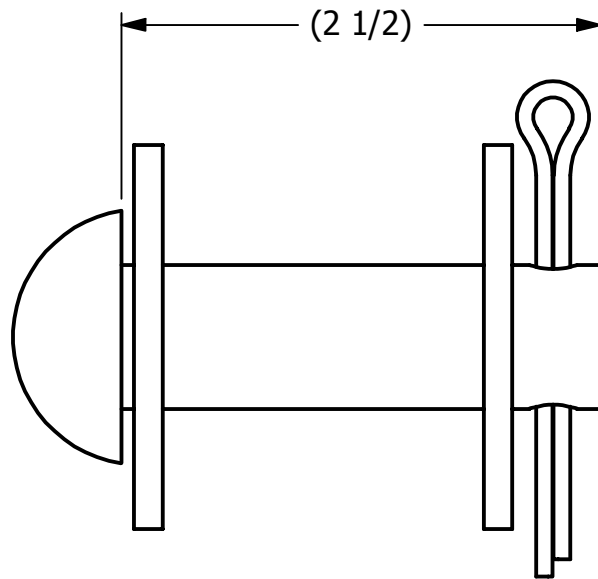


2



1

NO.	PART NAME	PART#	REQ'D	MATERIAL
1	BUTTON HEAD ROD	BHR3425HS4	1	304 SS
2	COTTER PIN 3/16"X2"	CP3162S6	1	316 SS
3	FLAT WASHER 3/4" USS	WASH34S6	2	316 SS

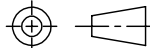


REV	BY	DATE	DESCRIPTION
D	WEB	7-24-17	WASH34S6 WAS WASH34S4
C	WEB	3-1-17	PART DESCRIPTION WAS BUTTON HEAD RIVET ASSEMBLY, UPDATED TO CURRENT DRAFTING STANDARDS
B	FOD	6/15/00	CHANGED NOTE WASHER PART NUMBER WAS WASH78S4
A	FOD	6/15/00	ADDED NOTE

**NOTE:**  
3/4" BUTTON HEAD ROD WAS MADE TO FIT 7/8" AND 3/4" EYEBOLTS. IT MAY BE USED WITH A 1" EYEBOLT IF THE CUSTOMER REQUESTS IT BUT IT IS NOT A RECOMMENDATION MADE BY SALCO.

UNLESS OTHERWISE SPECIFIED  
DIMENSIONAL TOLERANCES  
FRACTIONAL:  $\pm 1/16$   
X.XX:  $\pm .03$   
X.XXX:  $\pm .015$   
ANGULAR:  $\pm 1^\circ$   
DEBURR ALL SHARP EDGES.  
ALL MACHINED SURFACES TO  
HAVE A 125 RMS FINISH  
UNLESS NOTED OTHERWISE.

THIRD ANGLE PROJECTION



DRAWN BY: FOD

CHECKED BY: SAB

PROTOTYPE BY: FOD

PROTOTYPE DATE: 7/15/1999

APPROVED FOR PRODUCTION BY: SAB

PRODUCTION DATE: 7/15/1999

**SALCO PRODUCTS, INC.**

PART NAME:  
**BUTTON HEAD ROD ASSEMBLY**

MATERIAL: SEE BOM

PROJECT #: SHEET #: 1 OF 1 SCALE: 1:1

DRAWING #: **A13603** PART #: **BHR3425HS4A**

2



1