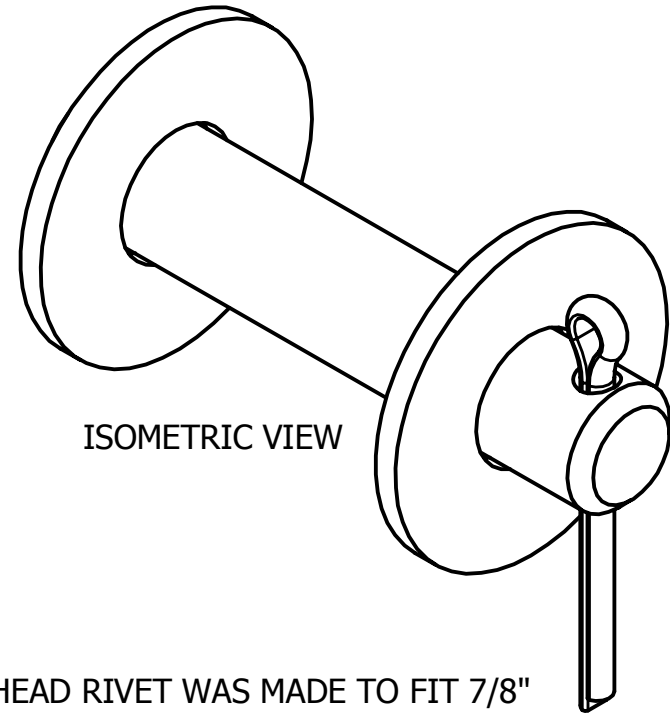
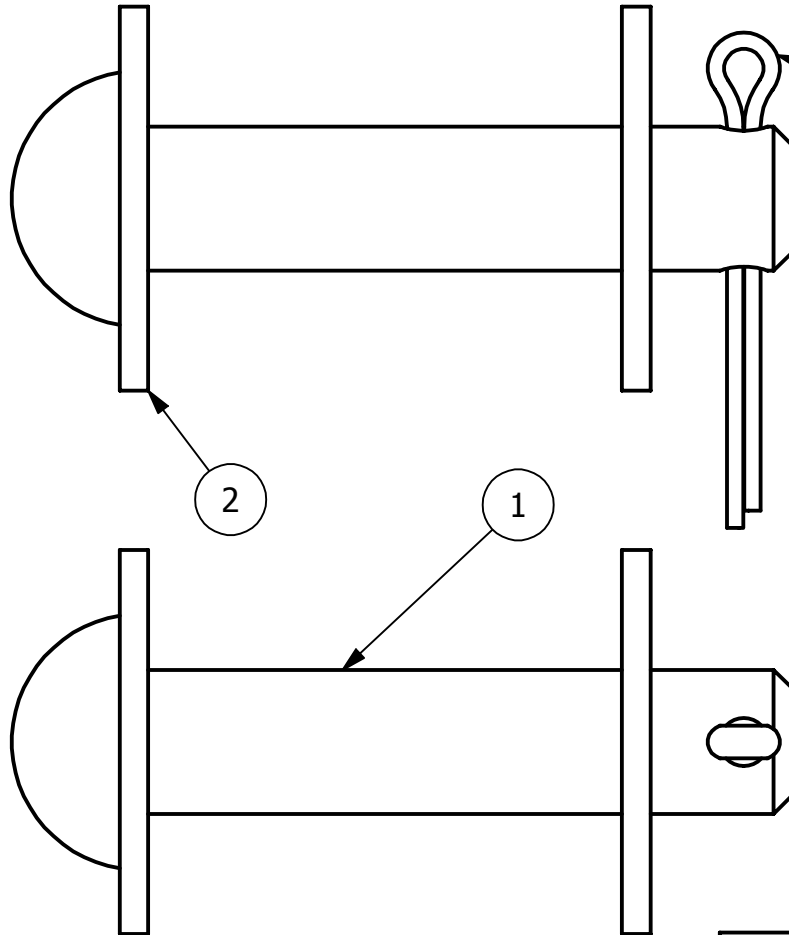


| NO. | PART NAME | PART # | REQ'D | MATERIAL |
|-----|----------------------|------------|-------|----------|
| 1 | BUTTON HEAD ROD | BHR3435HS4 | 1 | 304 SS |
| 2 | FLAT WASHER 3/4" USS | WASH34S6 | 2 | 316 SS |
| 3 | COTTER PIN 3/16"X2" | CP3162S6 | 1 | 316 SS |



ISOMETRIC VIEW

NOTE:
3/4" BUTTON HEAD RIVET WAS MADE TO FIT 7/8"
AND 3/4" EYEBOLTS. IT MAY BE USED WITH A 1"
EYEBOLT IF THE CUSTOMER REQUESTS IT BUT IT IS
NOT A RECOMMENDATION MADE BY SALCO.

| | | | |
|-----|-----|---------|--|
| A | WEB | 3-10-17 | PART DESCRIPTION WAS BUTTON HEAD RIVET ASSEMBLY, UPDATED TO CURRENT DRAFTING STANDARDS |
| REV | BY | DATE | DESCRIPTION |

UNLESS OTHERWISE SPECIFIED
DIMENSIONAL TOLERANCES
FRACTIONAL: $\pm 1/16$
X.XX: $\pm .03$
X.XXX: $\pm .015$
ANGULAR: $\pm 1^\circ$
DEBURR ALL SHARP EDGES.
ALL MACHINED SURFACES TO
HAVE A 125 RMS FINISH
UNLESS NOTED OTHERWISE.



| | |
|-----------------------------|-----------|
| DRAWN BY: | FOD |
| CHECKED BY: | SAB |
| PROTOTYPE BY: | FOD |
| PROTOTYPE DATE: | 7/16/1999 |
| APPROVED FOR PRODUCTION BY: | SAB |
| PRODUCTION DATE: | 7/16/1999 |

| | | |
|--|------------------------|------------|
| | | |
| PART NAME: BUTTON HEAD ROD ASSEMBLY | | |
| MATERIAL: SEE BOM | | |
| PROJECT #: | SHEET #: 1 OF 1 | SCALE: 1:1 |
| DRAWING #: A13611 | PART #: BHR3435HS4A | |