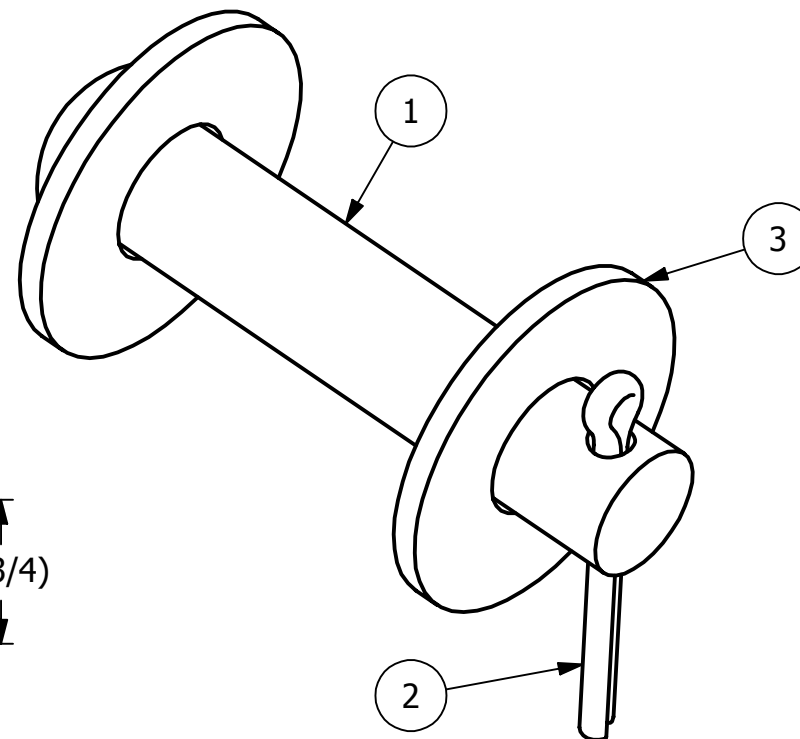
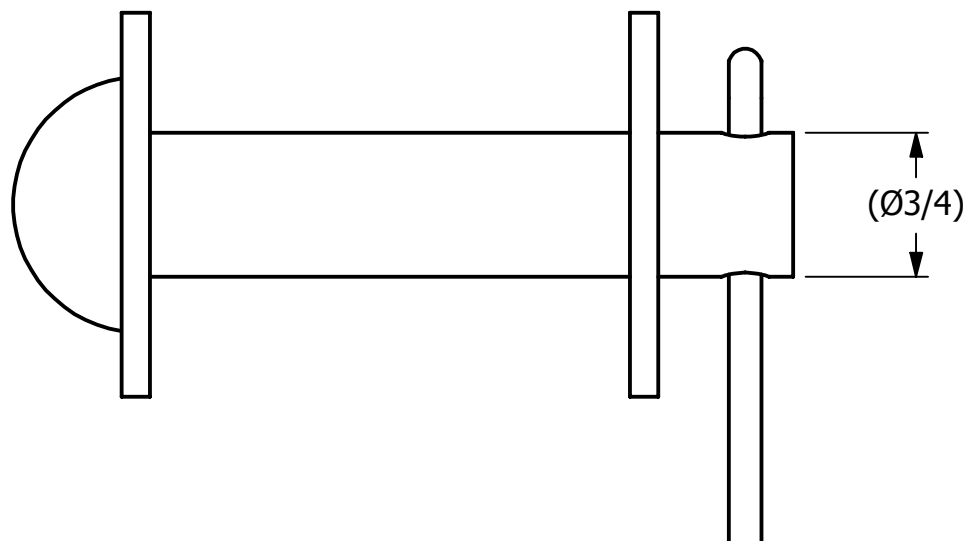
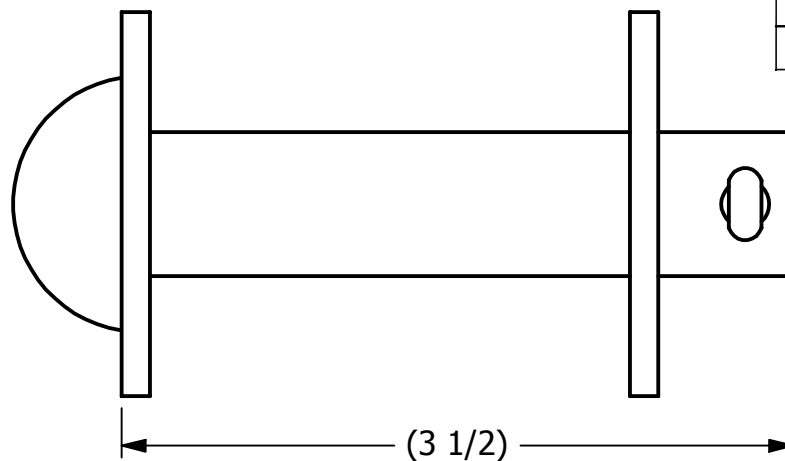


2

1

NO.	PART NAME	PART #	REQ'D	MATERIAL
1	BUTTON HEAD ROD	BHR3435HS416	1	416 SS
2	COTTER PIN 3/16"X2"	CP3162S6	1	316 SS
3	FLAT WASHER 3/4" USS	WASH34S6	2	316 SS

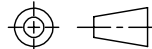


B	WEB	7-17-17	UPDATED TO CURRENT DRAFTING STANDARDS, PART DESCRIPTION WAS BUTTON HEAD RIVET ASSEMBLY
A	CHL	4-13-10	NEW PART ADDED TO SYSTEM
REV	BY	DATE	DESCRIPTION

**NOTE:**  
3/4" BUTTON HEAD ROD WAS MADE TO FIT  
7/8" AND 3/4" EYEBOLTS. IT MAY BE USED  
WITH A 1" EYEBOLTS IF THE CUSTOMER  
REQUESTS IT BUT IT IS NOT A  
RECOMMENDATION MADE BY SALCO.

UNLESS OTHERWISE SPECIFIED  
DIMENSIONAL TOLERANCES  
FRACTIONAL:  $\pm 1/16$   
X.XX:  $\pm .03$   
X.XXX:  $\pm .015$   
ANGULAR:  $\pm 1^\circ$   
DEBURR ALL SHARP EDGES.  
ALL MACHINED SURFACES TO  
HAVE A 125 RMS FINISH  
UNLESS NOTED OTHERWISE.

THIRD ANGLE PROJECTION



DRAWN BY:	CHL
CHECKED BY:	PJG
PROTOTYPE BY:	CHL
PROTOTYPE DATE:	12/3/2009
APPROVED FOR PRODUCTION BY:	PJG
PRODUCTION DATE:	4/13/2010

**SALCO PRODUCTS, INC.**

PART NAME:  
**BUTTON HEAD ROD ASSEMBLY**

MATERIAL: **SEE BOM**

PROJECT #: **WAG0751** SHEET #: **1 OF 1** SCALE: **1:1**

DRAWING #: **A27811** PART #: **BHR3435S6S416A**

2

1