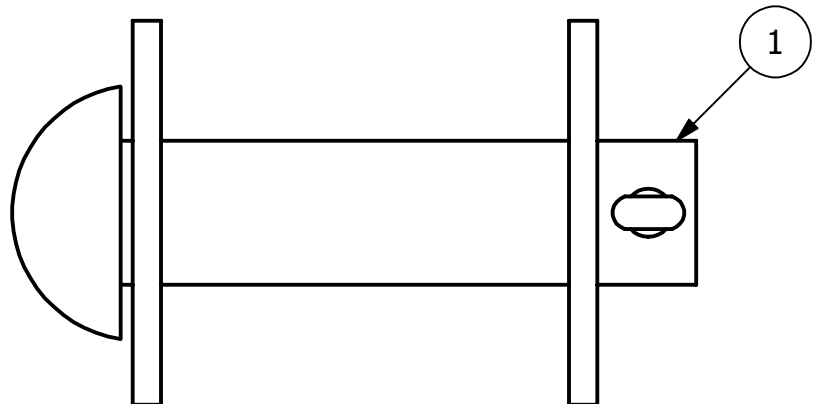
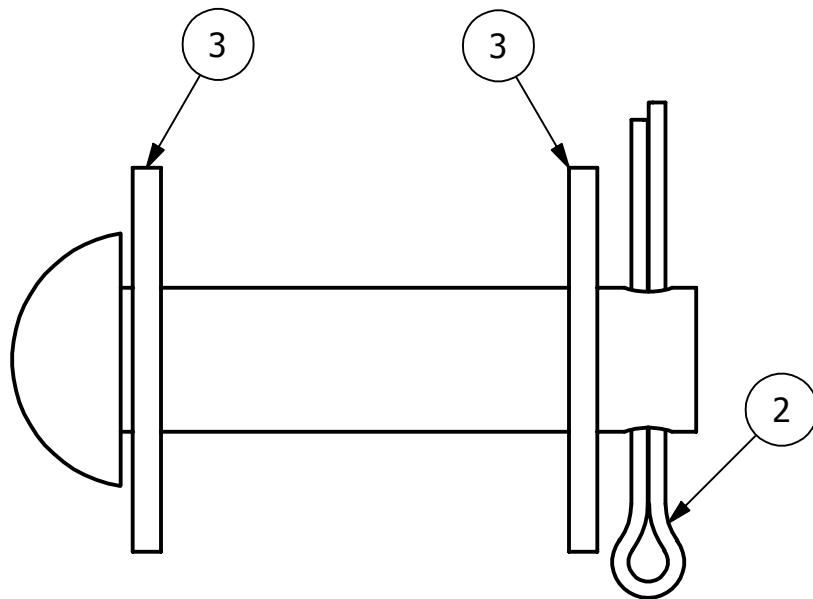


2

1

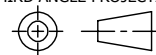
NO.	PART NAME	PART#	REQ'D	MATERIAL
1	BUTTON HEAD ROD	BHR343HS6	1	316 SS
2	COTTER PIN 3/16"X2"	CP3162S6	1	316 SS
3	FLAT WASHER 3/4" USS	WASH34S6	2	316 SS



NOTE:
 3/4" BUTTON HEAD ROD WAS MADE TO FIT 7/8" AND 3/4" EYEBOLTS. IT MAY BE USED WITH A 1" EYEBOLT IF THE CUSTOMER REQUESTS IT BUT IT IS NOT A RECOMMENDATION MADE BY SALCO.

C	TAK	1-5-17	DESCRIPTION WAS BUTTON HEAD RIVET ASSEMBLY, UPDATED DESCRIPTION FOR BHR343HS6
B	FOD	3-4-00	ADDED NOTE
A	FOD	7-19-99	UPDATED DRAWING WITH NEW STANDARDS
REV	BY	DATE	DESCRIPTION

UNLESS OTHERWISE SPECIFIED
 DIMENSIONAL TOLERANCES
 FRACTIONAL: ±1/16
 X.XX: ±.03
 X.XXX: ±.015
 ANGULAR: ±1°
 DEBURR ALL SHARP EDGES.
 ALL MACHINED SURFACES TO
 HAVE A 125 RMS FINISH
 UNLESS NOTED OTHERWISE.



DRAWN BY:	FOD
CHECKED BY:	SAB
PROTOTYPE BY:	FOD
PROTOTYPE DATE:	3/15/1999
APPROVED FOR PRODUCTION BY:	SAB
PRODUCTION DATE:	3/15/1999

SALCO PRODUCTS, INC.

PART NAME:
BUTTON HEAD ROD ASSEMBLY 3/4"X3"

MATERIAL: **SEE BOM**
 PROJECT #: **990304** SHEET #: **1 OF 1** SCALE: **1:1**

DRAWING #: **A13259** PART #: **BHR343HS6A**

2

1