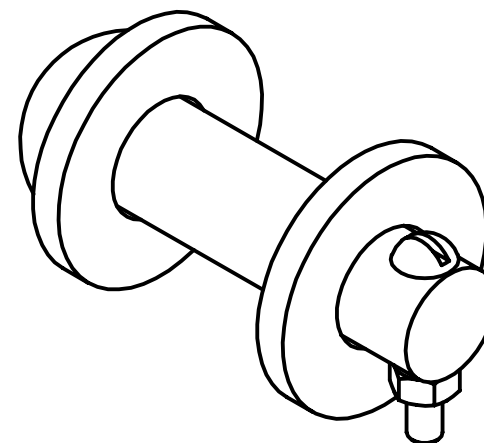
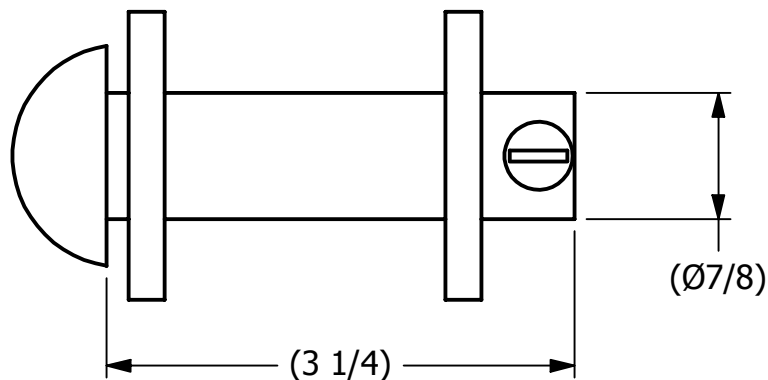


2

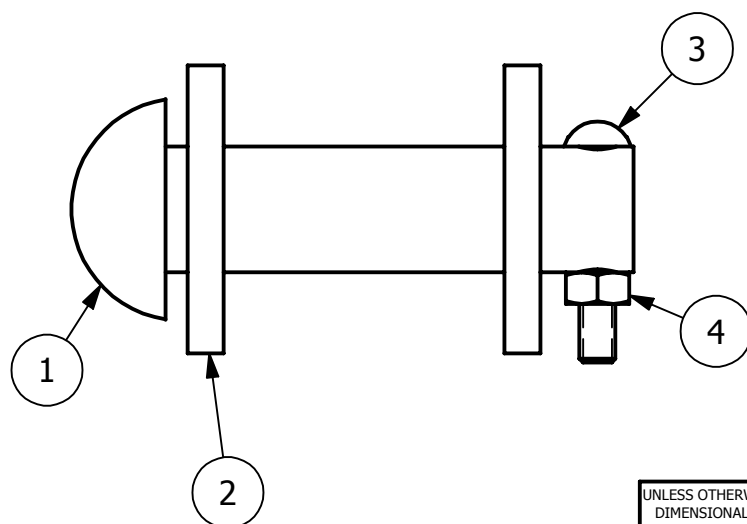


1

NO.	PART NAME	PART#	REQ'D	MATERIAL
1	BUTTON HEAD ROD 7/8"X3 1/4"	BHR78325HC1	1	CS
2	FLAT WASHER 7/8"	WASH78T	2	CS
3	SLOTTED ROUND SCREW 1/4"-20X1 1/2"	SRS25X112CS	1	CS Z/P
4	HEX NUT 1/4"-20	FHN36302	1	CS Z/P



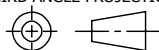
ISOMETRIC VIEW



NOTE:
7/8" BUTTON HEAD ROD WAS MADE TO FIT 7/8" AND 1"
EYEBOLTS.

REV	BY	DATE	DESCRIPTION
B	WEB	12-21-16	PART DESCRIPTION WAS BUTTON HEAD RIVET, UPDATED BOM & NOTE
A	CHL	2-21-11	DRAWING ADDED TO NETWORK

UNLESS OTHERWISE SPECIFIED
DIMENSIONAL TOLERANCES
FRACTIONAL: $\pm 1/16$
X.XX: $\pm .03$
X.XXX: $\pm .015$
ANGULAR: $\pm 1^\circ$
DEBURR ALL SHARP EDGES.
ALL MACHINED SURFACES TO
HAVE A 125 RMS FINISH
UNLESS NOTED OTHERWISE.



DRAWN BY:	VD
CHECKED BY:	CHL
PROTOTYPE BY:	VD
PROTOTYPE DATE:	7/21/2010
APPROVED FOR PRODUCTION BY:	CHL
PRODUCTION DATE:	2/21/2011

SALCO PRODUCTS, INC.		
PART NAME: BUTTON HEAD ROD 7/8"X3 1/4"		
MATERIAL: SEE BOM		
PROJECT #:	WAG0858	SHEET #: 1 OF 1
SCALE:	3:4	
DRAWING #:	A29123	PART #:
		BHR78325HC1A

THIS PRINT, PROPERTY OF SALCO PRODUCTS INC, CONTAINS PROPRIETARY INFORMATION AND MUST NOT BE COPIED, REPRODUCED, OR USED DETRIMENTALLY TO OUR INTEREST.

2



1