

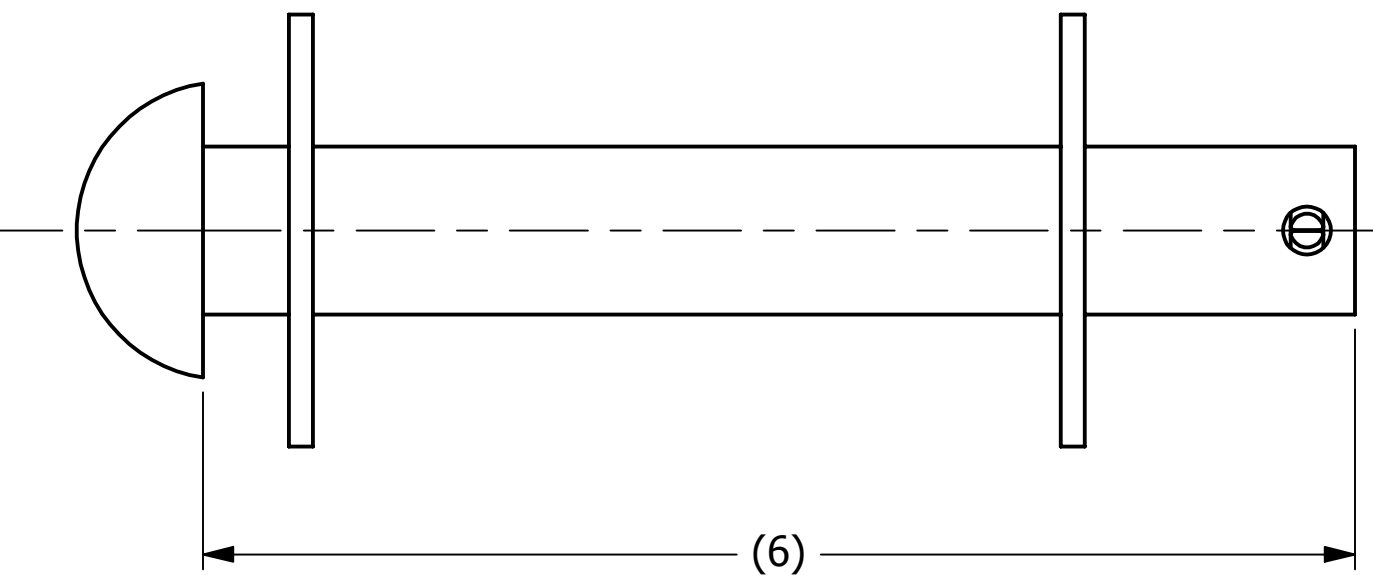
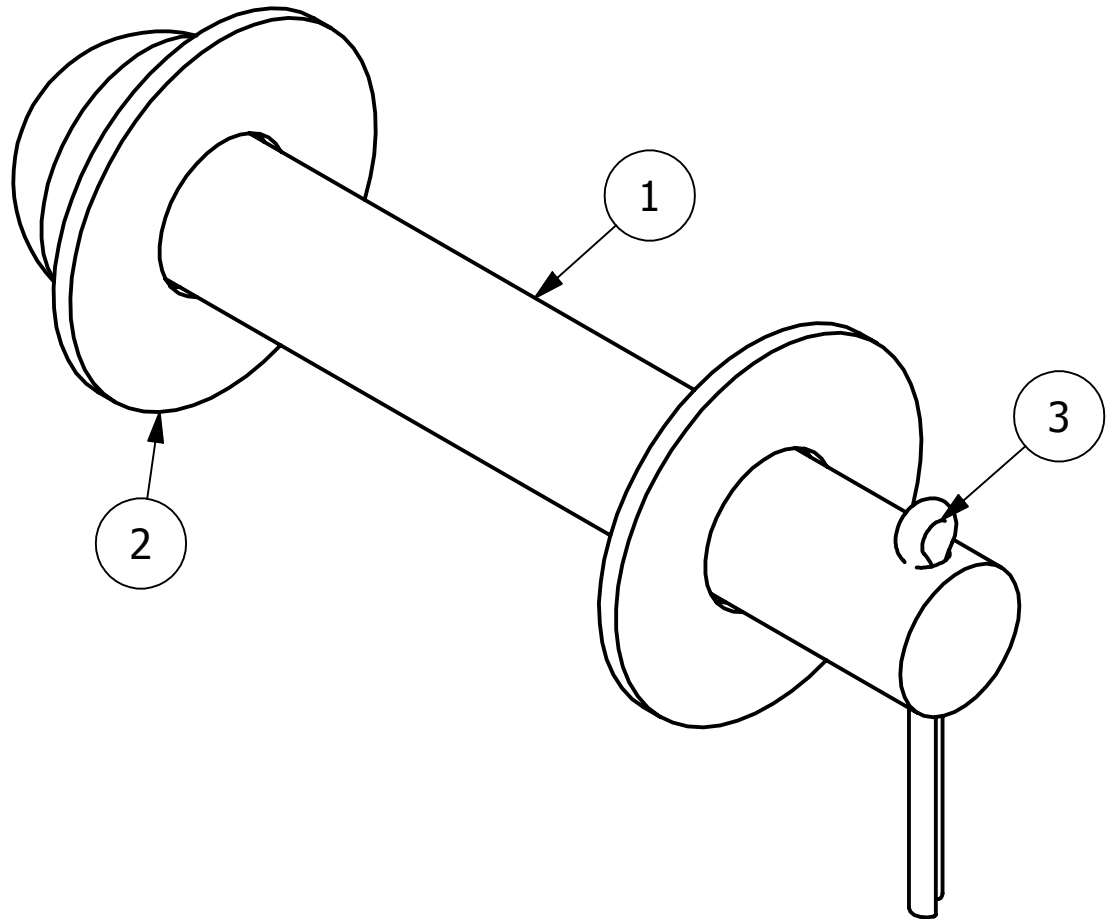
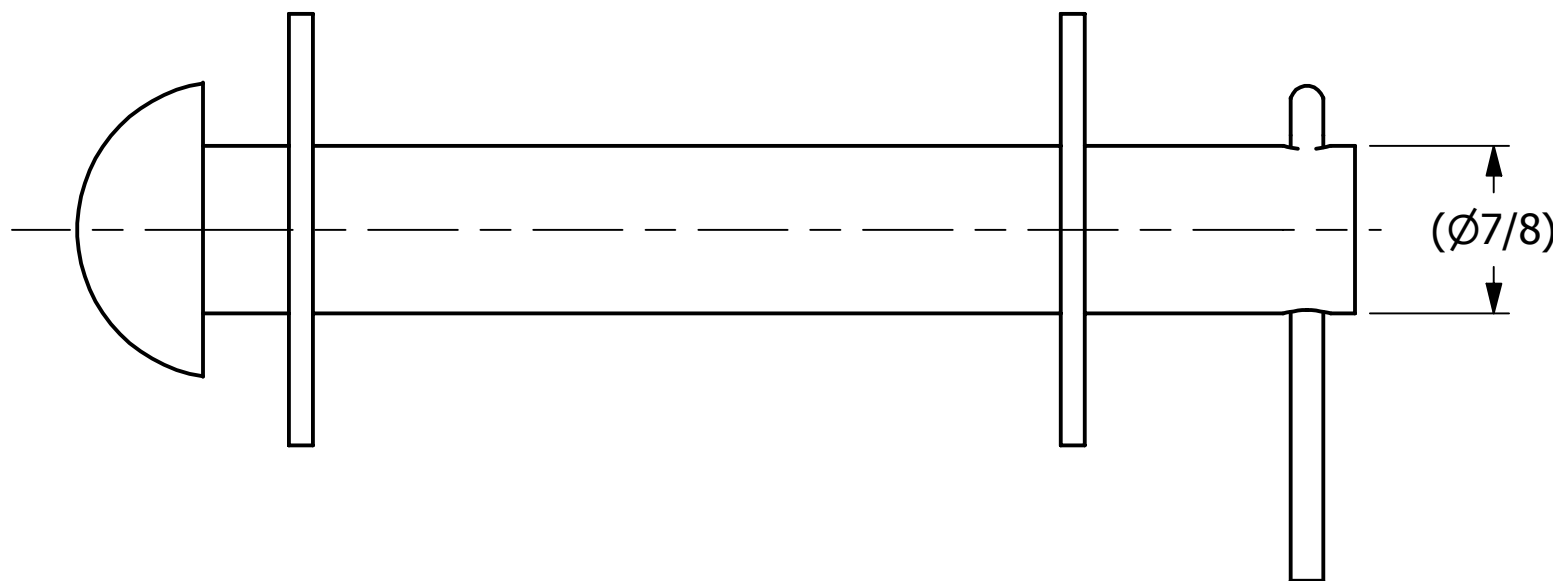
4

3

2

1

NO.	PART NAME	PART#	REQ'D	MATERIAL
1	BUTTON HEAD ROD	BHR786HC1T	1	CS XYLAN COATED
2	FLAT WASHER 7/8"	WASH78S6STD	2	316 SS
3	COTTER PIN 3/16"X2"	CP3162S6	1	316 SS



NOTE:
7/8" BUTTON HEAD ROD WAS MADE TO FIT 7/8" AND 1" EYEBOLTS.

REV	BY	DATE	DESCRIPTION
B	WEB	12-21-16	DESCRIPTION CHANGED FROM RIVET TO ROD, UPDATED BOM & TITLEBLOCK
A	CHL	9-11-09	NEW PART ADDED TO SYSTEM

UNLESS OTHERWISE SPECIFIED DIMENSIONAL TOLERANCES		DRAWN BY:	CHL
FRACTIONAL:	±1/16	CHECKED BY:	PJG
X.XX:	±.03	PROTOTYPE BY:	CHL
X.XXX:	±.015	PROTOTYPE DATE:	1/14/2009
ANGULAR:	±1°	APPROVED FOR PRODUCTION BY:	PJG
DEBURR ALL SHARP EDGES. ALL MACHINED SURFACES TO HAVE A 125 RMS FINISH UNLESS NOTED OTHERWISE.		PRODUCTION DATE:	9/11/2009
THIRD ANGLE PROJECTION			

SALCO PRODUCTS, INC.

PART NAME:
BUTTON HEAD ROD ASSEMBLY

MATERIAL: **SEE BOM**

PROJECT #: **WAG0641** SHEET #: **1 OF 1** SCALE: **1:1**

DRAWING #: **B26396** PART #: **BHR786HC1AT**

THIS PRINT, PROPERTY OF SALCO PRODUCTS INC., CONTAINS PROPRIETARY INFORMATION AND MUST NOT BE COPIED, REPRODUCED, OR USED DETRIMENTALLY TO OUR INTEREST.