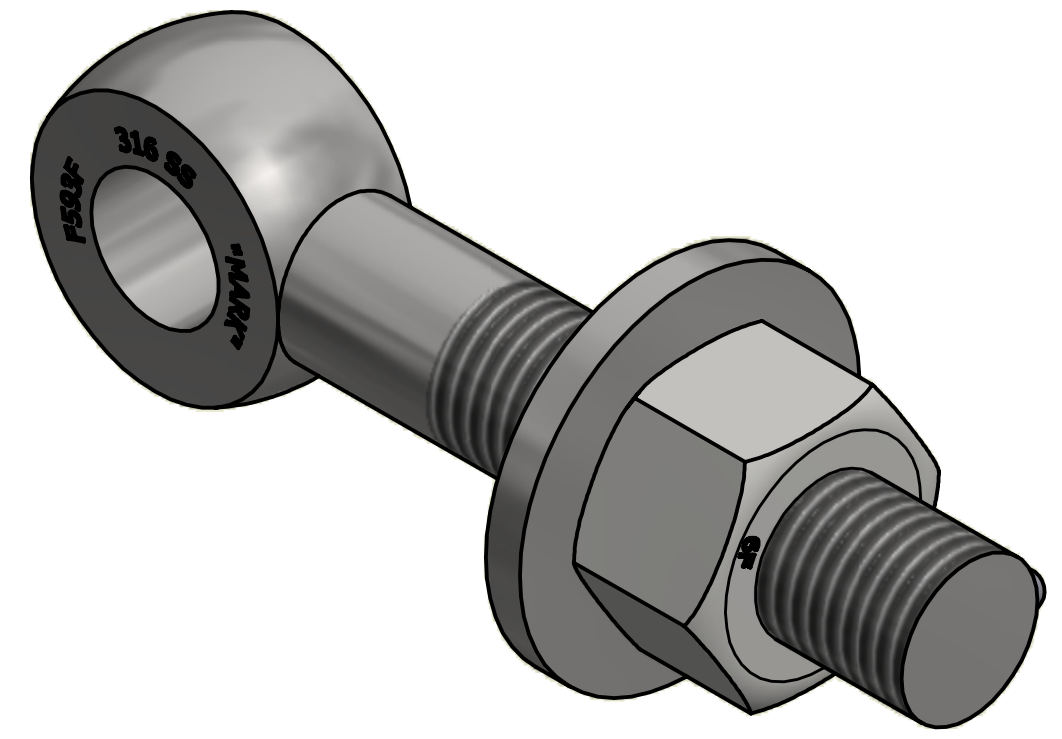
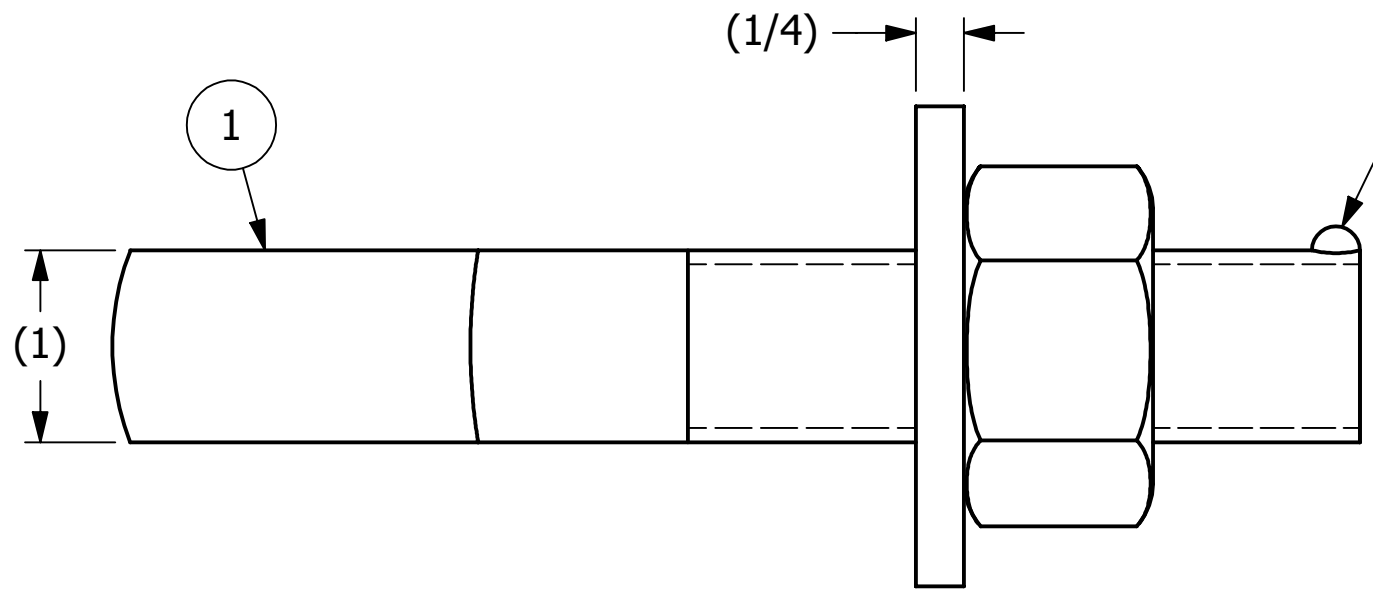
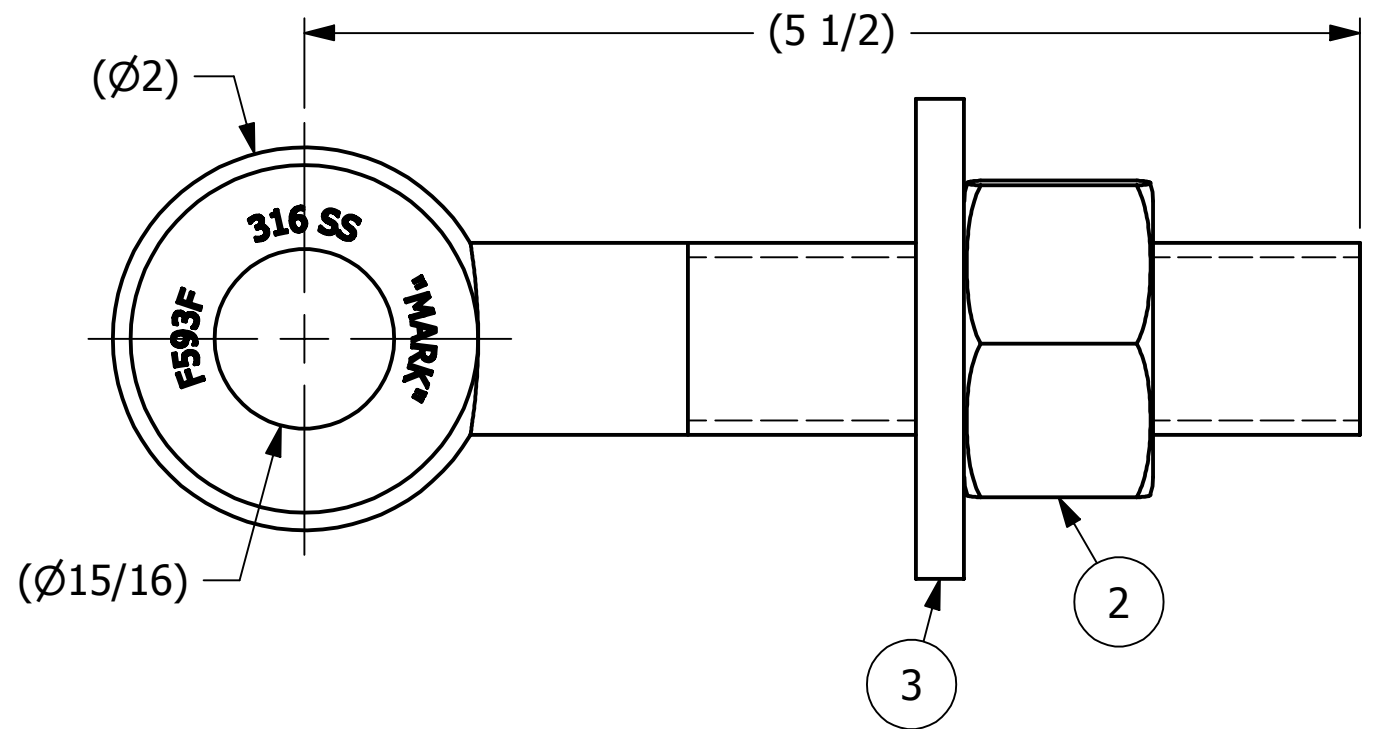


NO	PART NAME	PART#	REQ'D	MATERIAL
1	EYEBOLT 1"X5 1/2"	EBR155S6	1	316 SS
2	HEAVY HEX NUT 1"-8	N1XS6	1	416 SS
3	FLAT WASHER 1"	WASH1S6T	1	316 SS



ISOMETRIC VIEW



REV	BY	DATE	DESCRIPTION
B	JG	12-27-16	REPLACED WASH1S6 W/ WASH1S6T; UPDATED TITLEBLOCK
A	CHL	9-17-10	NEW PART ADDED TO NETWORK

<small>UNLESS OTHERWISE SPECIFIED DIMENSIONAL TOLERANCES</small> FRACTIONAL: ±1/16 X.XX: ±.03 X.XXX: ±.015 ANGULAR: ±1° <small>DEBURR ALL SHARP EDGES. ALL MACHINED SURFACES TO HAVE A 125 RMS FINISH UNLESS NOTED OTHERWISE.</small>	DRAWN BY:	CHL
	CHECKED BY:	ACC
	PROTOTYPE BY:	CHL
	PROTOTYPE DATE:	11/30/2006
<small>THIRD ANGLE PROJECTION</small> 	APPROVED FOR PRODUCTION BY:	ACC
	PRODUCTION DATE:	9/17/2010

SALCO PRODUCTS, INC.

PART NAME: EYEBOLT ASSEMBLY 1"X5 1/2"

MATERIAL: SEE BOM

PROJECT #: WAG0376 SHEET #: 1 OF 1 SCALE: 1:1

DRAWING #: B22901 PART #: EB155XAS6

THIS PRINT, PROPERTY OF SALCO PRODUCTS INC., CONTAINS PROPRIETARY INFORMATION AND MUST NOT BE COPIED, REPRODUCED, OR USED DETRIMENTALLY TO OUR INTEREST.