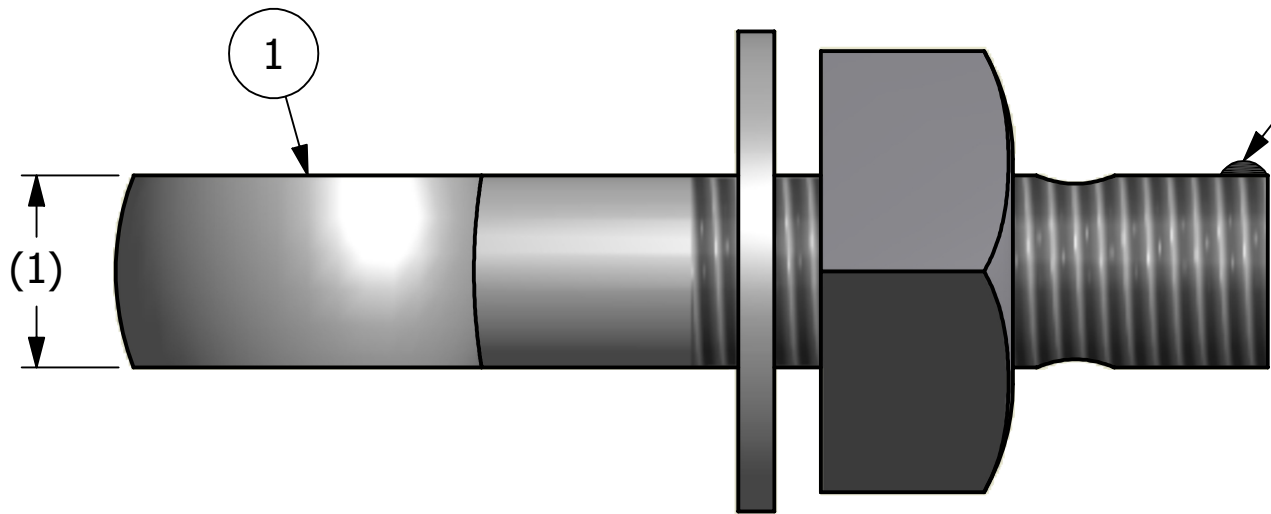
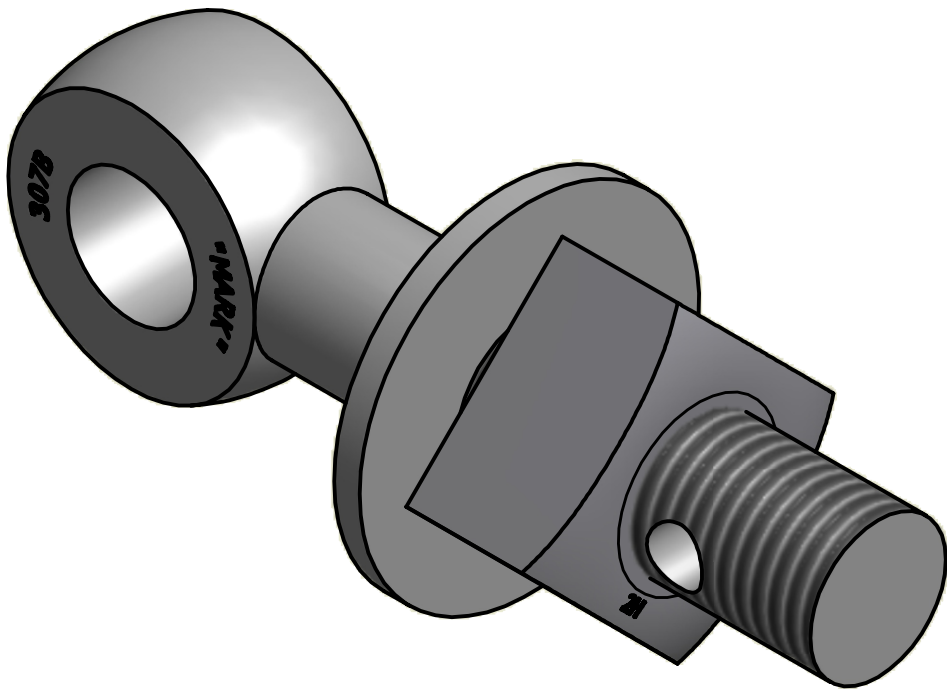


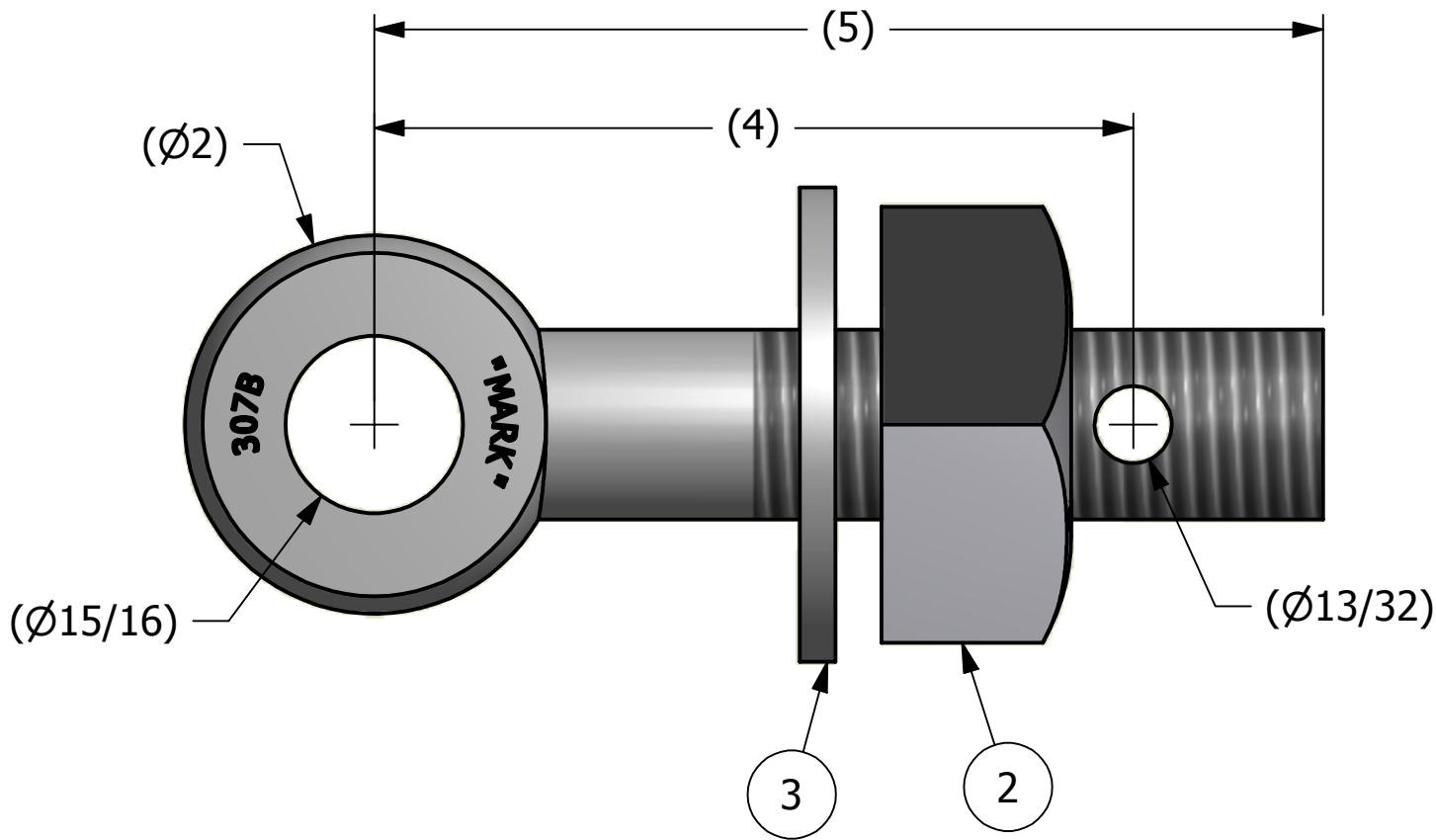
NO.	PART NAME	PART #	REQ'D	MATERIAL
1	EYEBOLT 1"X5"	EBR15H	1	CARBON STEEL
2	HEAVY SQUARE NUT 1"-8	N1	1	CARBON STEEL
3	FLAT WASHER 1"	WASH1P	1	CARBON STEEL



APPLY A BEAD OF WELD TO THE TWO END  
THREADS AFTER INSTALLING WASHER AND NUT




ISOMETRIC VIEW



B	CHL	1-19-09	CHANGED EYEBOLT MATERIAL
A	CHL	4-25-01	REPLACED WASH1 WITH WASH1P
REV	BY	DATE	DESCRIPTION

UNLESS OTHERWISE SPECIFIED DIMENSIONAL TOLERANCES	DRAWN BY:	FOD
FRACTIONAL: $\pm 1/16$	CHECKED BY:	SAB
X.XX: $\pm .03$	PROTOTYPE BY:	FOD
X.XXX: $\pm .015$	PROTOTYPE DATE:	4/22/1999
ANGULAR: $\pm 1^\circ$	APPROVED FOR PRODUCTION BY:	SAB
DEBURR ALL SHARP EDGES. ALL MACHINED SURFACES TO HAVE A 125 RMS FINISH UNLESS NOTED OTHERWISE.	PRODUCTION DATE:	4/22/1999
THIRD ANGLE PROJECTION		

 <b>SALCO PRODUCTS, INC.</b>		
PART NAME: <b>EYEBOLT ASSEMBLY 1"X5"</b>		
MATERIAL: <b>SEE BOM</b>		
PROJECT #:	SHEET #: <b>1 OF 1</b>	SCALE: <b>1:1</b>
DRAWING #:	PART #:	
<b>B13376</b>	<b>EB15HA</b>	

THIS PRINT, PROPERTY OF SALCO PRODUCTS INC., CONTAINS PROPRIETARY INFORMATION  
AND MUST NOT BE COPIED, REPRODUCED, OR USED DETRIMENTALLY TO OUR INTEREST.