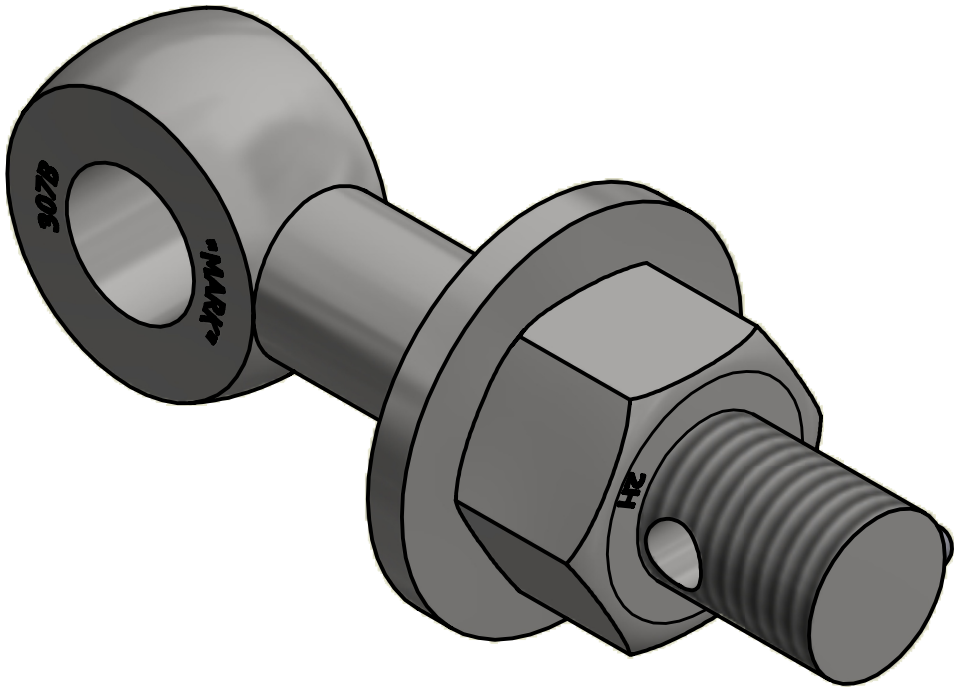
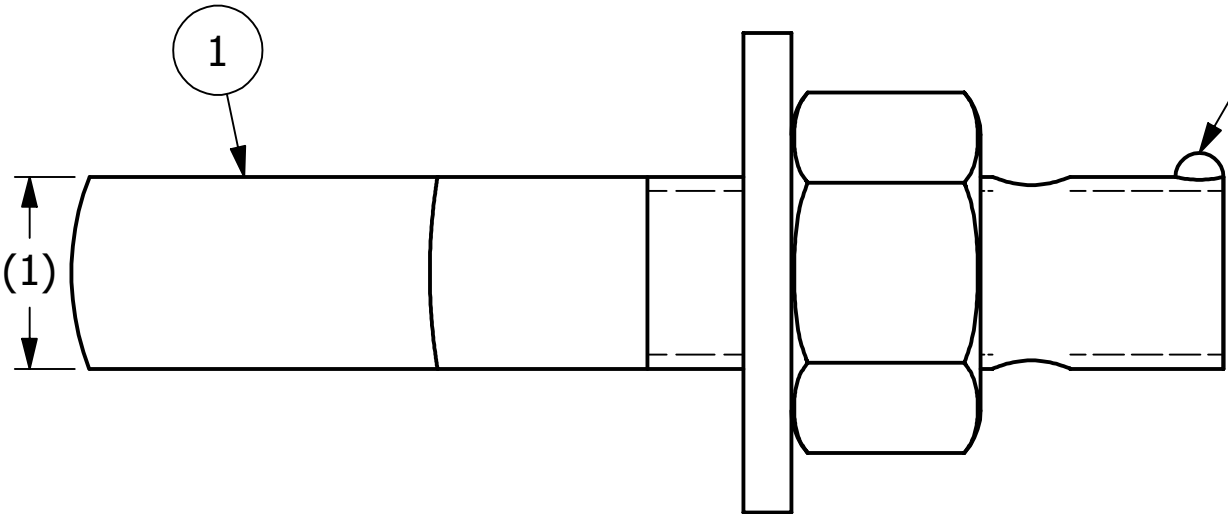
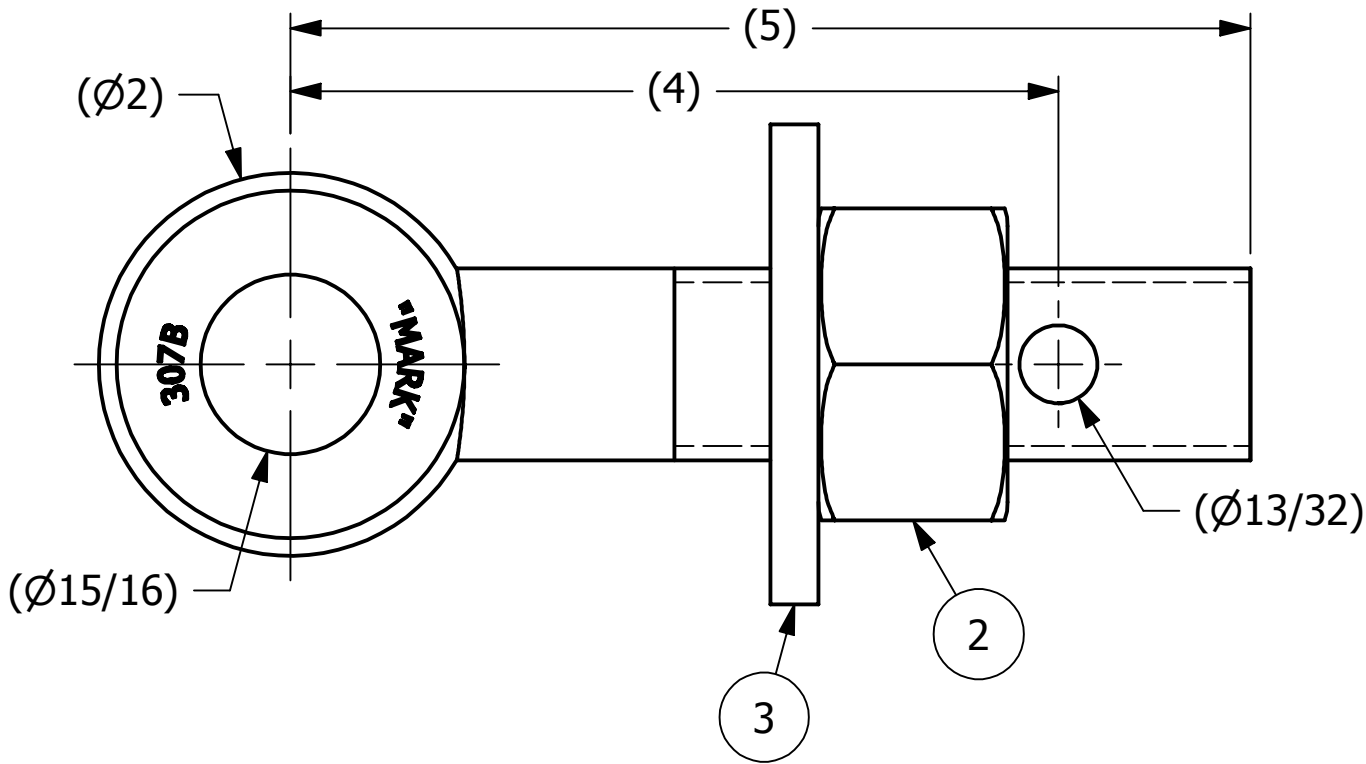


2		1		
NO	PART NAME	PART#	REQ'D	MATERIAL
1	EYEBOLT 1"X5"	EBR15H	1	CS
2	HEAVY HEX NUT 1"-8	N1X	1	A194-2H
3	FLAT WASHER 1"	WASH1PT	1	CS




ISOMETRIC VIEW



D	WEB	3-7-18	UPDATED TITLE BLOCK, WASH1PT WAS WASH1P
C	CHL	4-7-09	CHANGED EYEBOLT MATERIAL
B	CHL	4-24-01	REPLACED WASH1 WITH WASH1P
A	FOD	5-12-99	REVISED DRAWING, ADDED NEW TITLE BLOCK
REV	BY	DATE	DESCRIPTION

UNLESS OTHERWISE SPECIFIED DIMENSIONAL TOLERANCES FRACTIONAL: $\pm 1/16$ X.XX: $\pm .03$ X.XXX: $\pm .015$ ANGULAR: $\pm 1^\circ$ DEBURR ALL SHARP EDGES. ALL MACHINED SURFACES TO HAVE A 125 RMS FINISH UNLESS NOTED OTHERWISE. THIRD ANGLE PROJECTION	DRAWN BY:	TJN
	CHECKED BY:	
	PROTOTYPE BY:	TJN
	PROTOTYPE DATE:	1/28/1993
	APPROVED FOR PRODUCTION BY:	TJN
		PRODUCTION DATE: 1/28/1993

 SALCO PRODUCTS, INC.		
PART NAME: EYEBOLT ASSEMBLY 1"X5"		
MATERIAL: SEE BOM		
PROJECT #:	SHEET #: 1 OF 1	SCALE: 1:1
DRAWING #: B5366	PART #: EB15XHA	