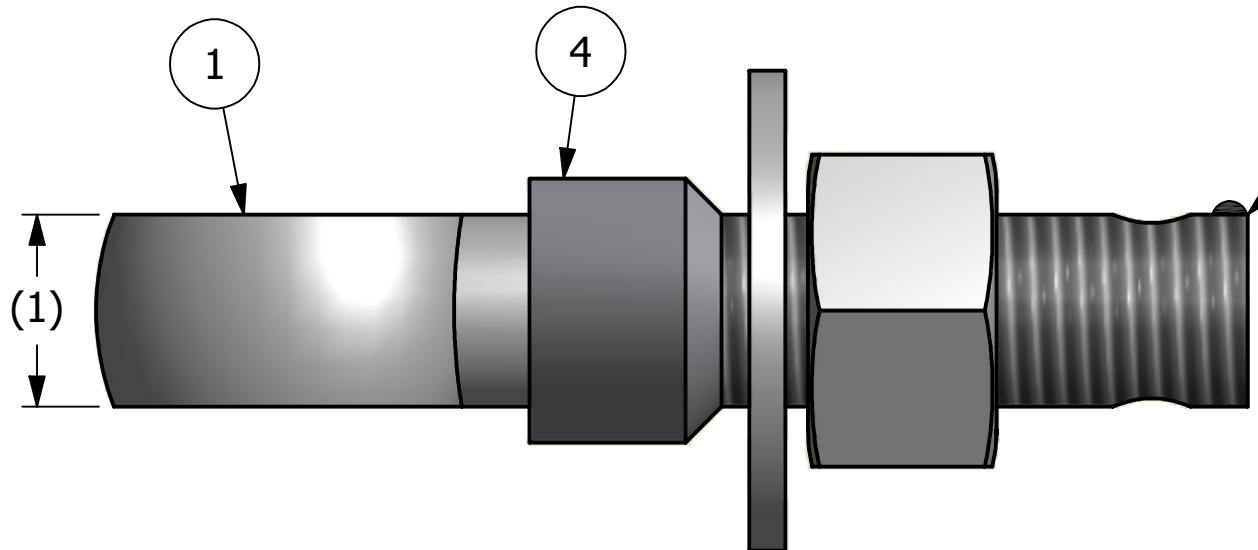
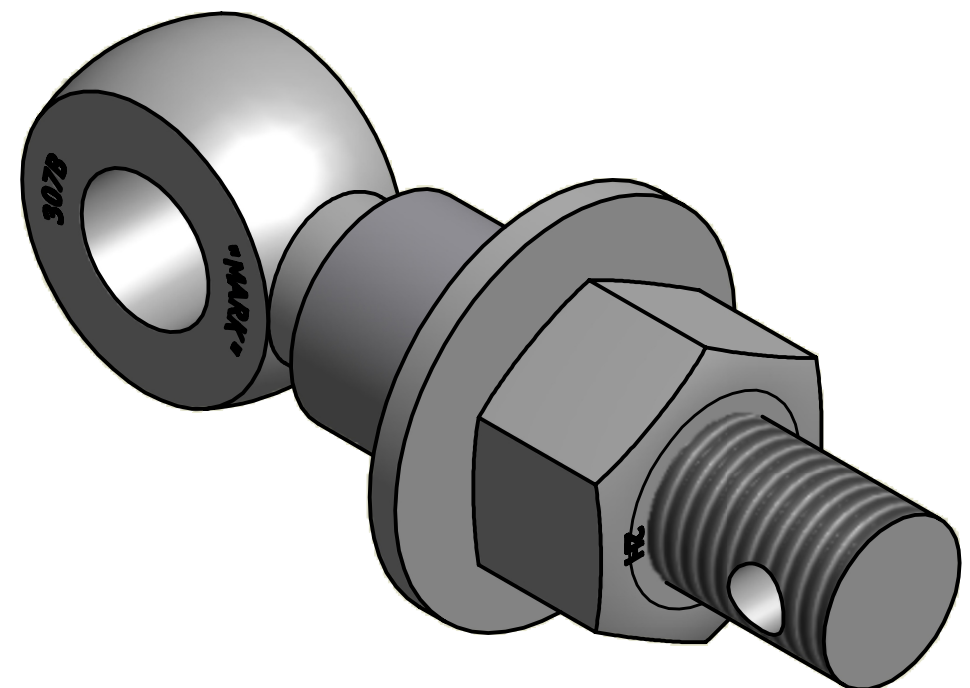


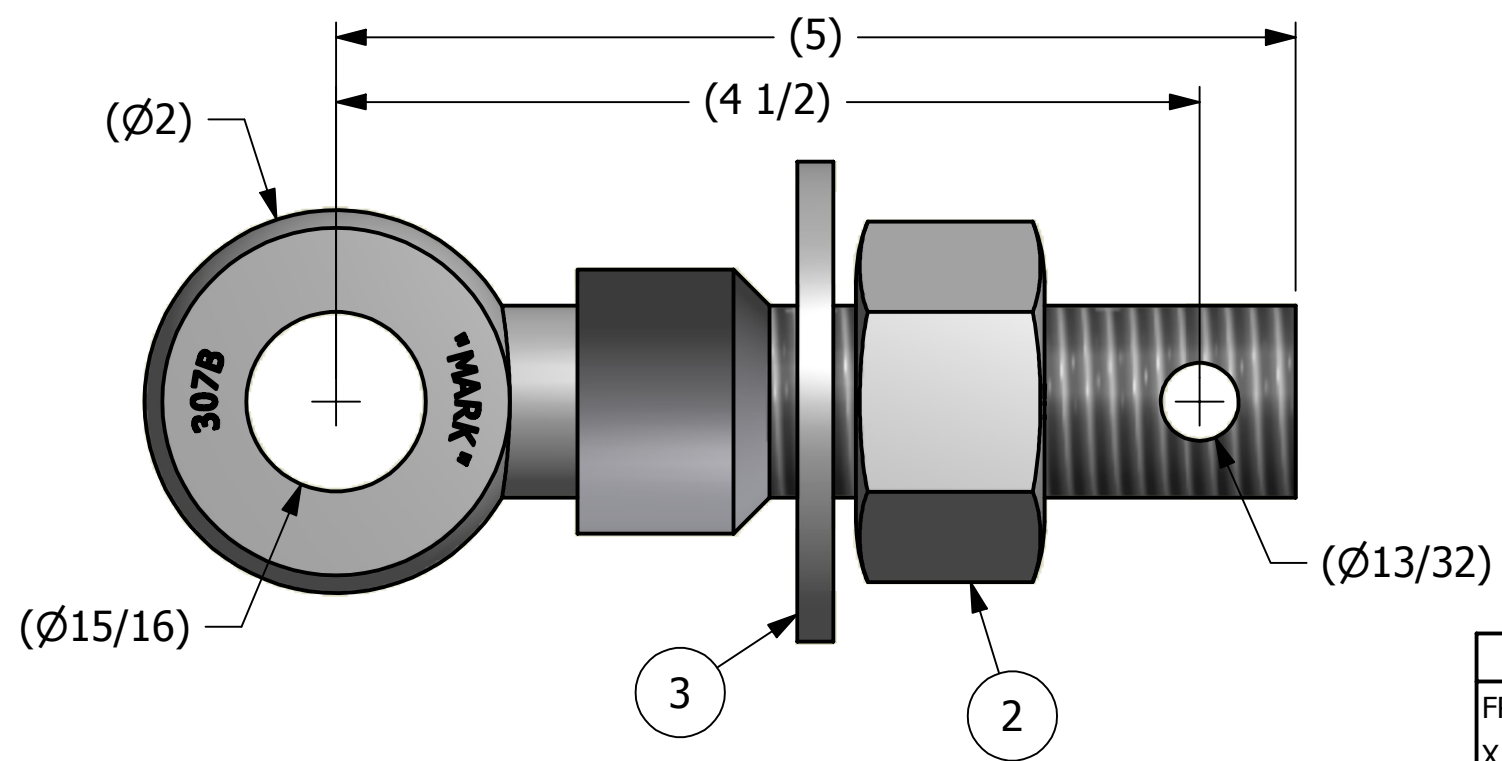
NO.	PART NAME	PART#	REQ'D	MATERIAL
1	EYEBOLT 1"X5"	EBR15HFT	1	CARBON STEEL
2	HEAVY HEX NUT 1"-8	N1X	1	CARBON STEEL
3	FLAT WASHER 1"	WASH1P	1	CARBON STEEL
4	EYEBOLT SAFETY COLLAR 1"	COLLAR1S3T3	1	303 SS



APPLY A BEAD OF WELD TO THE TWO END THREADS AFTER INSTALLING WASHER, NUT AND COLLAR



ISOMETRIC VIEW



NOTE:  
APPLY JET LUBE(PFPE GREASE) TO WORKING THREAD AREA,  
THE BOTTOM FACE OF THE NUT AND THE TOP FACE OF THE  
WASHER.

A	BG	8-30-12	NEW PART ADDED TO THE NETWORK
REV	BY	DATE	DESCRIPTION

UNLESS OTHERWISE SPECIFIED DIMENSIONAL TOLERANCES	DRAWN BY:	CHL
FRACTIONAL: ±1/16	CHECKED BY:	WRB
X.XX: ±.03	PROTOTYPE BY:	CHL
X.XXX: ±.015	PROTOTYPE DATE:	8/5/2010
ANGULAR: ±1°	APPROVED FOR PRODUCTION BY:	WRB
THIS PRINT, PROPERTY OF SALCO PRODUCTS INC., CONTAINS PROPRIETARY INFORMATION AND MUST NOT BE COPIED, REPRODUCED, OR USED DETRIMENTALLY TO OUR INTEREST.	PRODUCTION DATE:	8/30/2012
THIRD ANGLE PROJECTION		

**SALCO PRODUCTS, INC.**

PART NAME: EYEBOLT ASSEMBLY 1"X5"

MATERIAL: SEE BOM

PROJECT #: WAG0864    SHEET #: 1 OF 1    SCALE: 1:1

DRAWING #: **B29227**    PART #: **EB15XHFTATC3L**