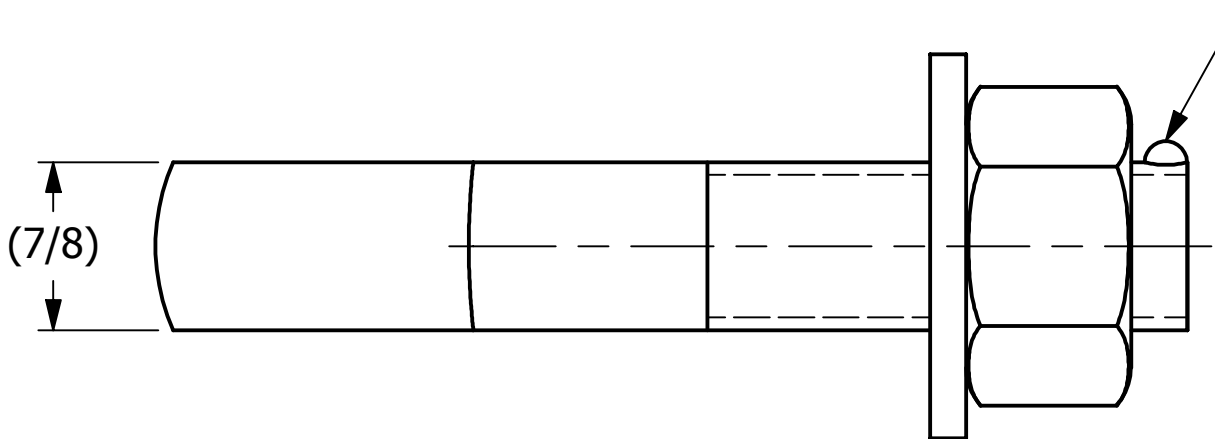
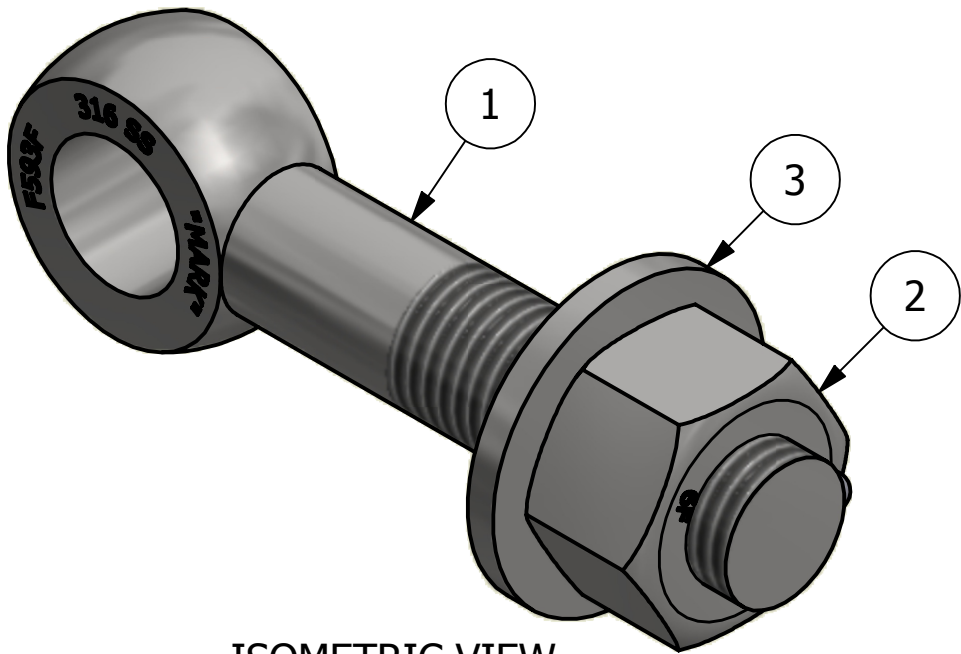
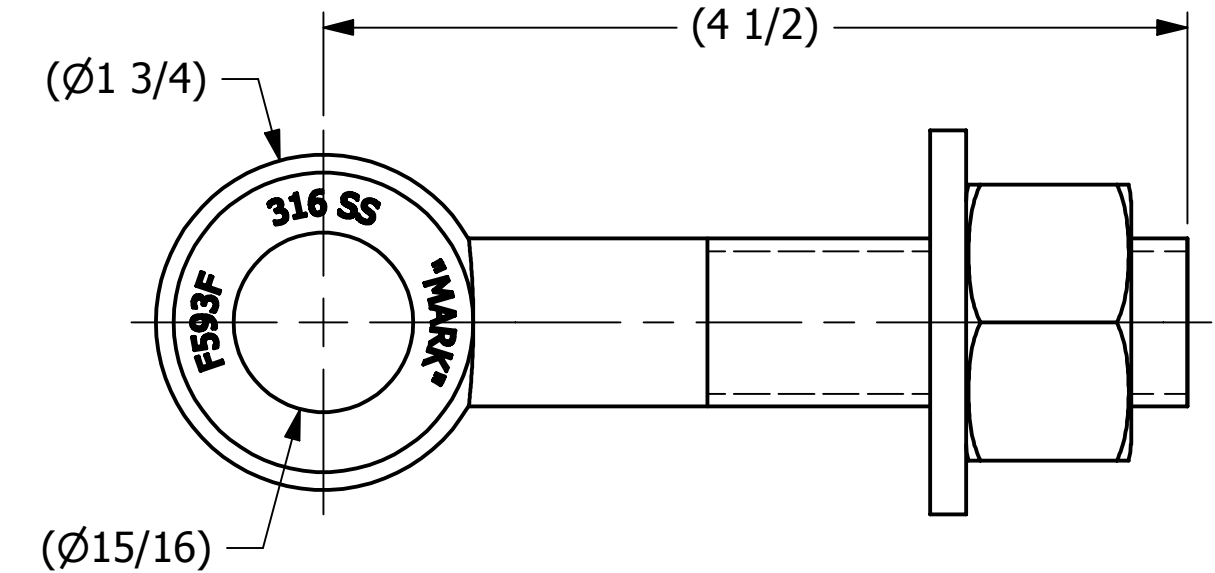


NO	PART NAME	PART#	REQ'D	MATERIAL
1	EYEBOLT 7/8"X4 1/2"	EBR7845S6	1	316 SS
2	HEAVY HEX NUT 7/8"-9	N78XS6	1	416 SS
3	FLAT WASHER 7/8" SAE	WASH78S6	1	316 SS



APPLY A BEAD OF WELD TO THE TWO END  
THREADS AFTER INSTALLING WASHER AND NUT



ISOMETRIC VIEW

B	RJP	7-14-17	WASH78S6 WAS WASH78S4; UDPATED TITLE BLOCK
A	CHL	5-24-06	NEW PART ADDED TO SYSTEM
REV	BY	DATE	DESCRIPTION

UNLESS OTHERWISE SPECIFIED DIMENSIONAL TOLERANCES FRACTIONAL: ±1/16 X.XX: ±.03 X.XXX: ±.015 ANGULAR: ±1° DEBURR ALL SHARP EDGES. ALL MACHINED SURFACES TO HAVE A 125 RMS FINISH UNLESS NOTED OTHERWISE. THIRD ANGLE PROJECTION	DRAWN BY:	CHL
	CHECKED BY:	PJG
	PROTOTYPE BY:	CHL
	PROTOTYPE DATE:	3/13/2006
	APPROVED FOR PRODUCTION BY:	PJG
	PRODUCTION DATE:	5/24/2006

PART NAME: EYEBOLT ASSEMBLY 7/8"X4 1/2"		
MATERIAL: SEE BOM		
PROJECT #: WAG0307	SHEET #: 1 OF 1	SCALE: 1:1
DRAWING #: B21666	PART #: EB7845XAS6	