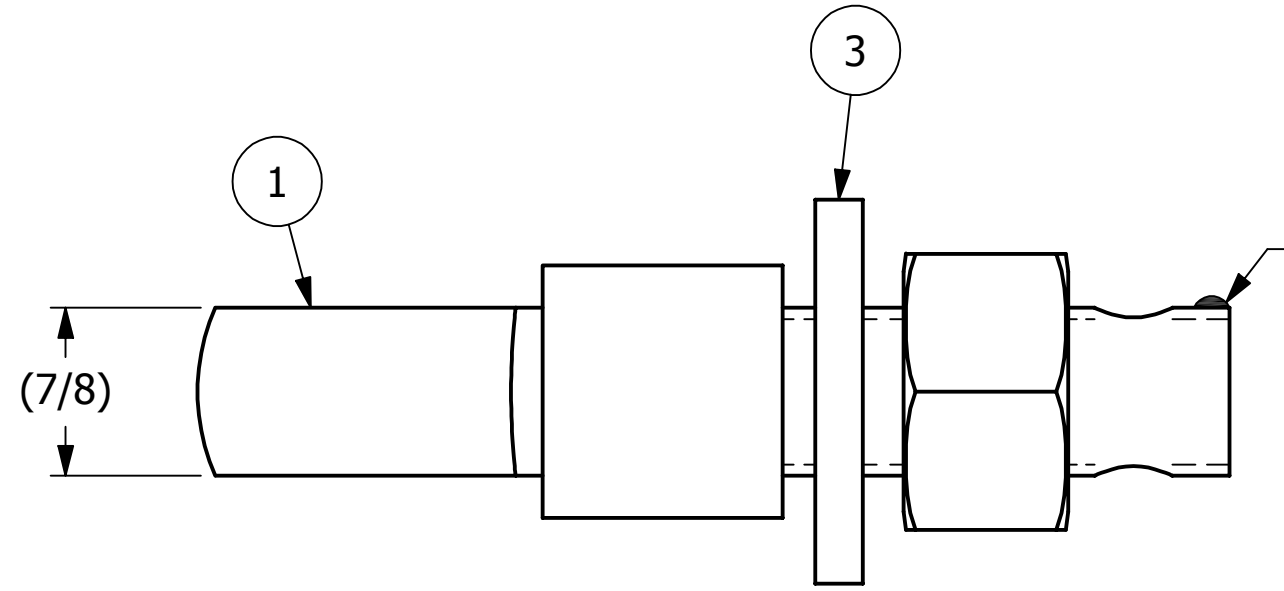
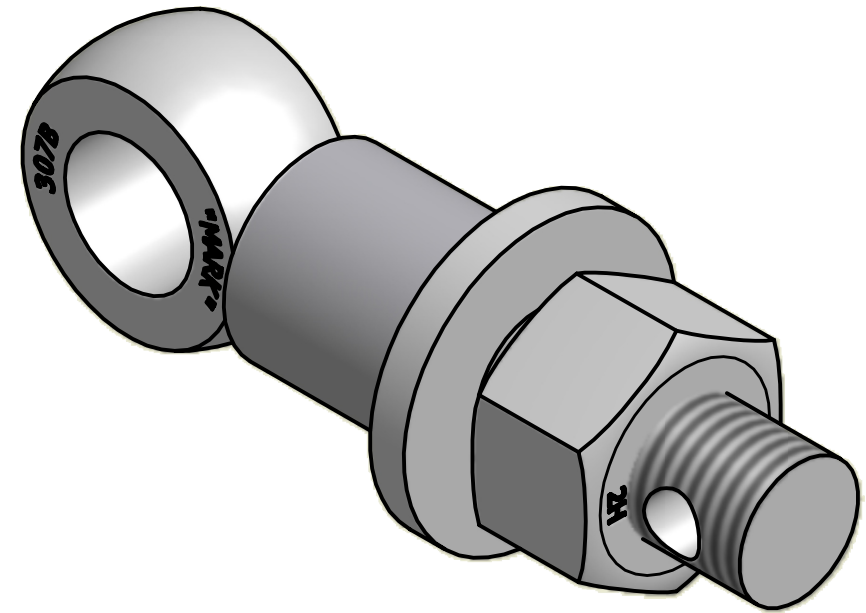


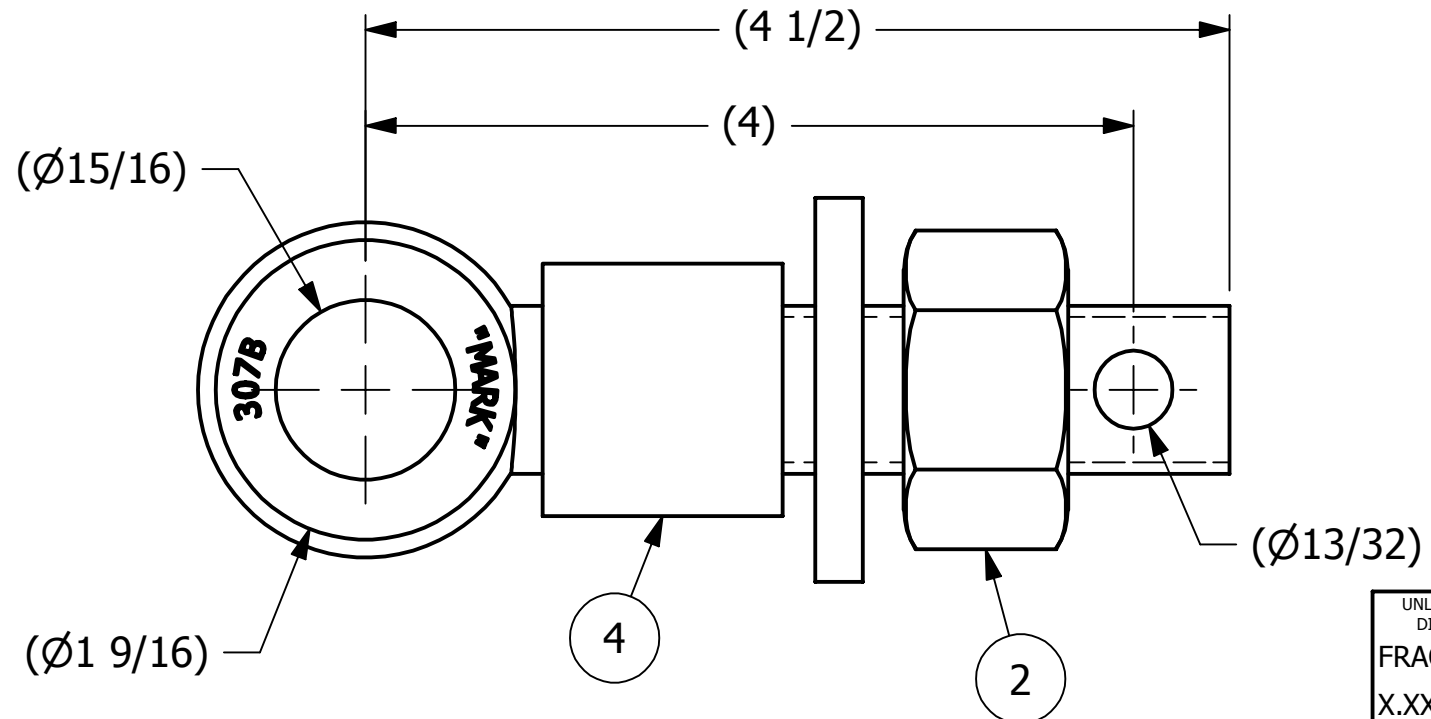
NO.	PART NAME	PART#	REQ'D	MATERIAL
1	EYEBOLT 7/8"X4 1/2"	EBR7845H	1	CARBON STEEL
2	HEAVY HEX NUT 7/8"-9	N78X	1	CARBON STEEL
3	FLAT WASHER 7/8"	WASH78T	1	CARBON STEEL
4	SAFETY COLLAR 1"	COLLAR1	1	CARBON STEEL



APPLY A BEAD OF WELD TO THE TWO END THREADS AFTER INSTALLING COLLAR, WASHER, AND NUT.



ISOMETRIC VIEW



A	CHL	9-8-10	NEW PART ADDED TO NETWORK
REV	BY	DATE	DESCRIPTION

<small>UNLESS OTHERWISE SPECIFIED DIMENSIONAL TOLERANCES</small> FRACTIONAL: ±1/16 X.XX: ±.03 X.XXX: ±.015 ANGULAR: ±1° <small>DEBURR ALL SHARP EDGES. ALL MACHINED SURFACES TO HAVE A 125 RMS FINISH UNLESS NOTED OTHERWISE.</small>	DRAWN BY:	CHL
	CHECKED BY:	WRB
	PROTOTYPE BY:	CHL
	PROTOTYPE DATE:	9/1/2010
	APPROVED FOR PRODUCTION BY:	WRB
	PRODUCTION DATE:	9/8/2010

SALCO PRODUCTS, INC.

PART NAME: **EYEBOLT ASSEMBLY 7/8"X4 1/2"**

MATERIAL: **SEE BOM**

PROJECT #: **WAG0852** SHEET #: **1 OF 1** SCALE: **1:1**

DRAWING #: **B29370** PART #: **EB7845XHAC**

THIS PRINT, PROPERTY OF SALCO PRODUCTS INC., CONTAINS PROPRIETARY INFORMATION AND MUST NOT BE COPIED, REPRODUCED, OR USED DETRIMENTALLY TO OUR INTEREST.