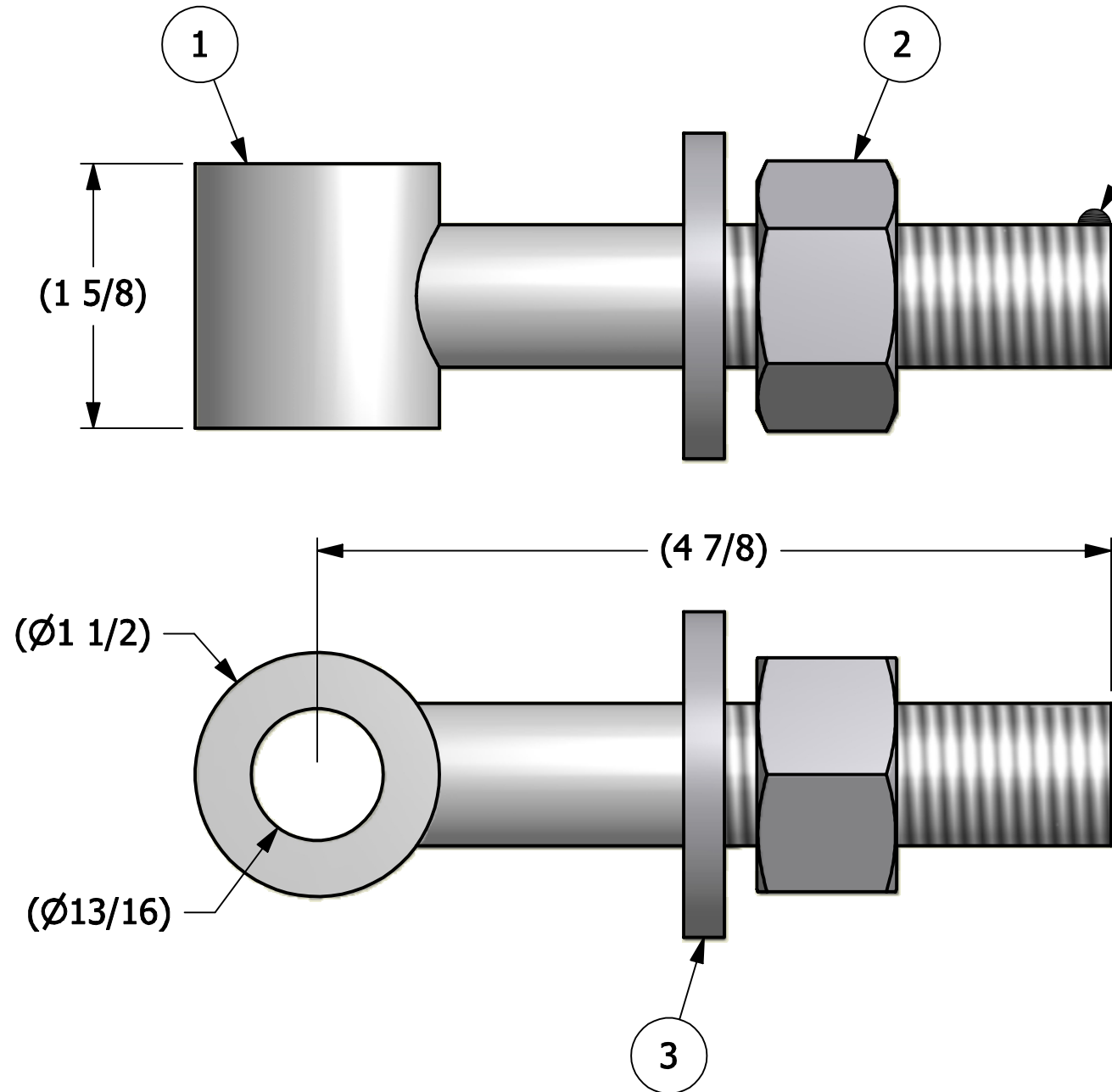
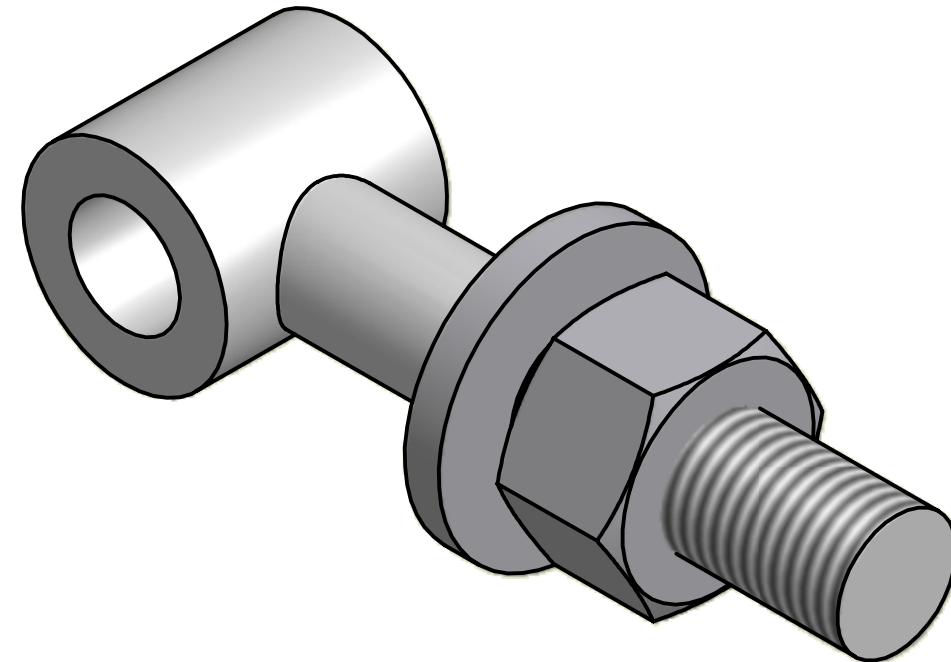


NO.	PART NAME	PART #	REQ'D	MATERIAL
1	EYEBOLT 7/8"X4 7/8"	EBR78478T	1	ASTM A307 GR B
2	HEAVEY HEX NUT 7/8"-9	N78X	1	CARBON STEEL
3	FLAT WASHER 7/8" USS	WASH78T	1	CARBON STEEL



APPLY A BEAD OF WELD TO THE TWO END THREADS AFTER INSTALLING WASHER AND NUT.



ISOMETRIC VIEW

B	BRG	6-25-08	EBR78478T WAS 1045 STEEL
A	CHL	4-6-04	NEW PART ADDED TO SYSTEM
REV	BY	DATE	DESCRIPTION

UNLESS OTHERWISE SPECIFIED DIMENSIONAL TOLERANCES	DRAWN BY:	CHL
FRACTIONAL: ±1/16	CHECKED BY:	PJG
X.XX: ±.03	PROTOTYPE BY:	CHL
X.XXX: ±.015	PROTOTYPE DATE:	3/15/2004
ANGULAR: ±1°	APPROVED FOR PRODUCTION BY:	PJG
THIS PRINT, PROPERTY OF SALCO PRODUCTS INC., CONTAINS PROPRIETARY INFORMATION AND MUST NOT BE COPIED, REPRODUCED, OR USED DETRIMENTALLY TO OUR INTEREST.	PRODUCTION DATE:	4/6/2004
THIRD ANGLE PROJECTION		

SALCO PRODUCTS, INC.

PART NAME: **EYEBOLT ASSEMBLY 7/8"X4 7/8"**

MATERIAL: **SEE BOM**

PROJECT #: **WAG0115** SHEET #: **1 OF 1** SCALE: **1:1**

DRAWING #: **B19007** PART #: **EB78478XTA**