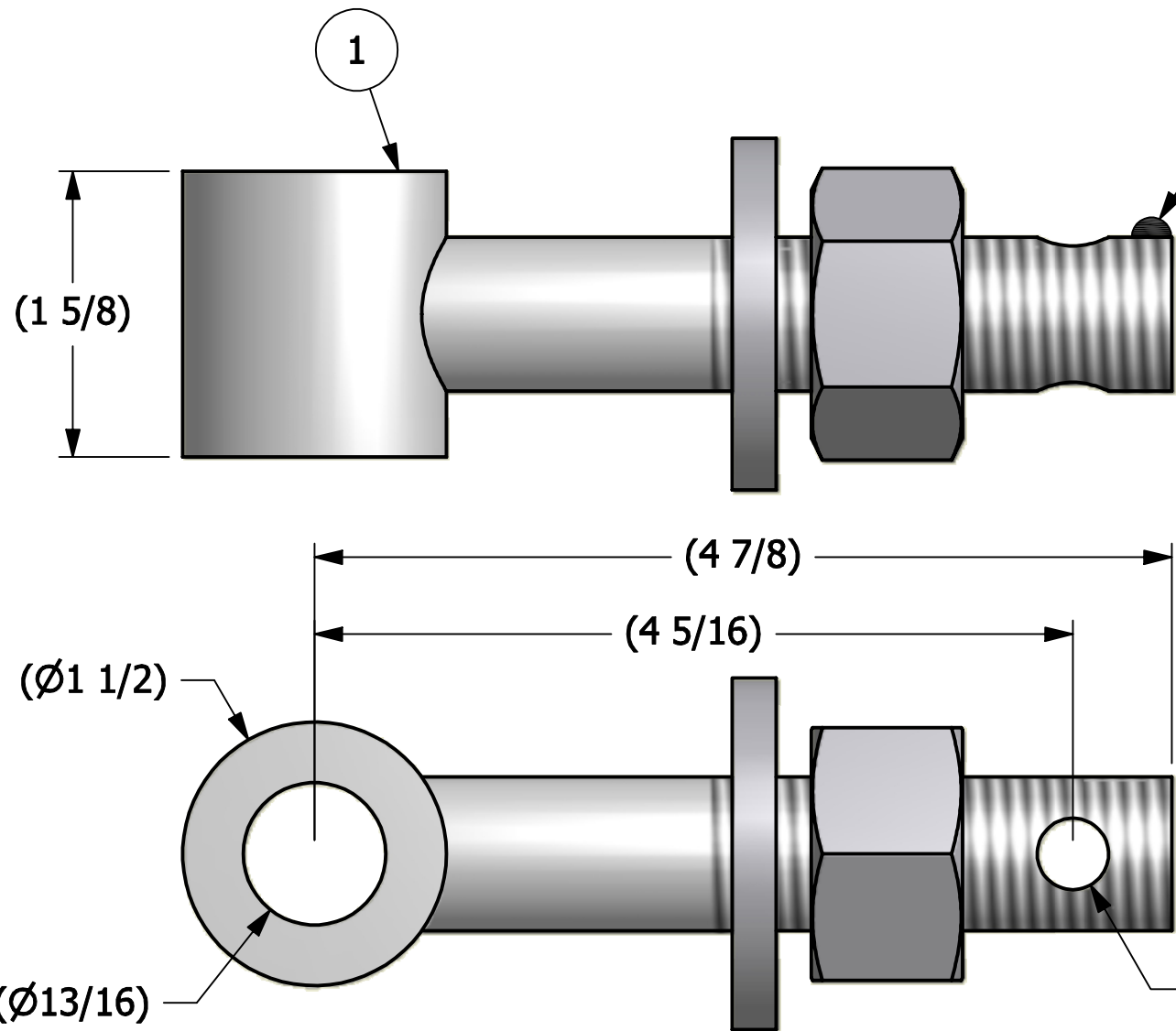
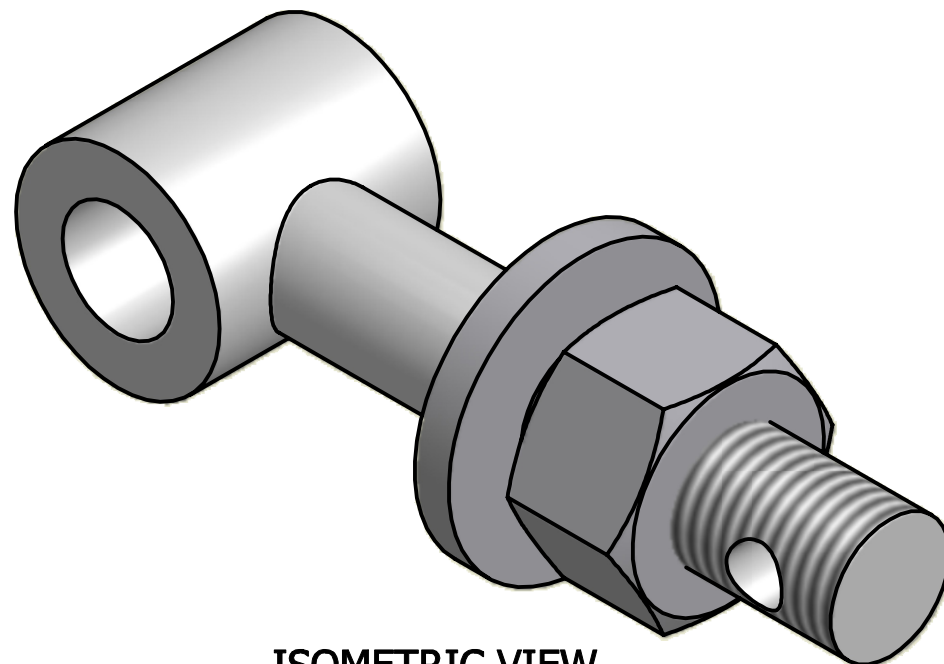


NO.	PART NAME	PART#	REQ'D	MATERIAL
1	EYEBOLT 7/8"X4 7/8"	EBR78478TH	1	ASTM A307 GR B
4	HEAVY HEX NUT 7/8"-9	N78X	1	CARBON STEEL
5	FLAT WASHER 7/8" USS	WASH78T	1	CARBON STEEL



APPLY A BEAD OF WELD TO THE TWO END THREADS AFTER INSTALLING WASHER AND NUT



ISOMETRIC VIEW

REV	BY	DATE	DESCRIPTION
C	BRG	7-30-08	N78X WAS N78XT AND WASH78T WAS WASH78SST
B	BRG	6-20-08	EBR78478TH WAS 1045 STEEL
A	CHL	10-1-04	NEW PART ADDED TO SYSTEM

UNLESS OTHERWISE SPECIFIED DIMENSIONAL TOLERANCES		DRAWN BY:	CHL
FRACTIONAL:	±1/16	CHECKED BY:	ACC
X.XX:	±.03	PROTOTYPE BY:	CHL
X.XXX:	±.015	PROTOTYPE DATE:	7/7/2004
ANGULAR:	±1°	APPROVED FOR PRODUCTION BY:	ACC
THIS PRINT, PROPERTY OF SALCO PRODUCTS INC., CONTAINS PROPRIETARY INFORMATION AND MUST NOT BE COPIED, REPRODUCED, OR USED DETRIMENTALLY TO OUR INTEREST.		PRODUCTION DATE:	10/1/2004
THIRD ANGLE PROJECTION			

**SALCO PRODUCTS, INC.**

PART NAME: **EYEBOLT ASSEMBLY 7/8"X4 7/8"**

MATERIAL: **SEE BOM**

PROJECT #: **WAG0156** SHEET #: **1 OF 1** SCALE: **1:1**

DRAWING #: **B19362** PART #: **EB78478XTHA**