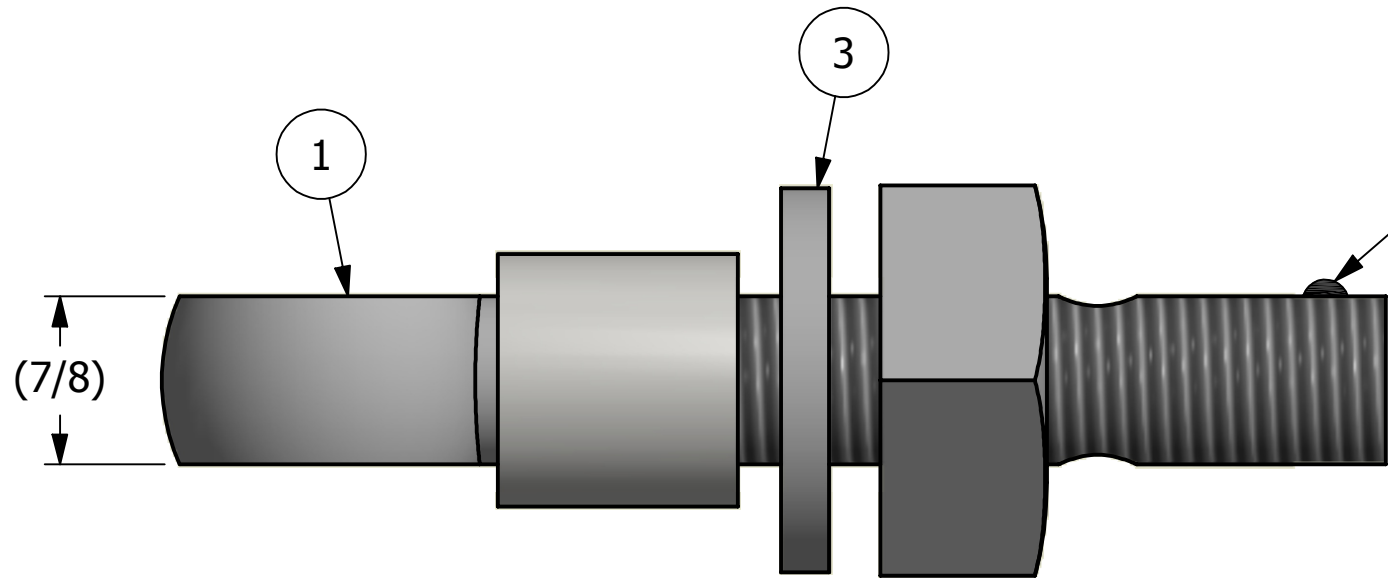
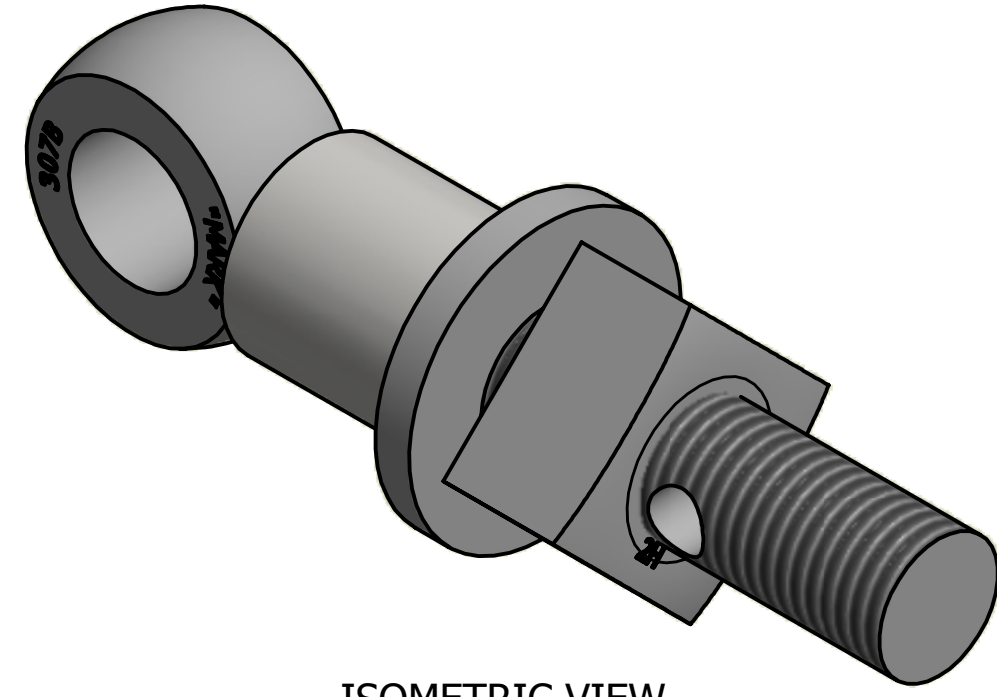


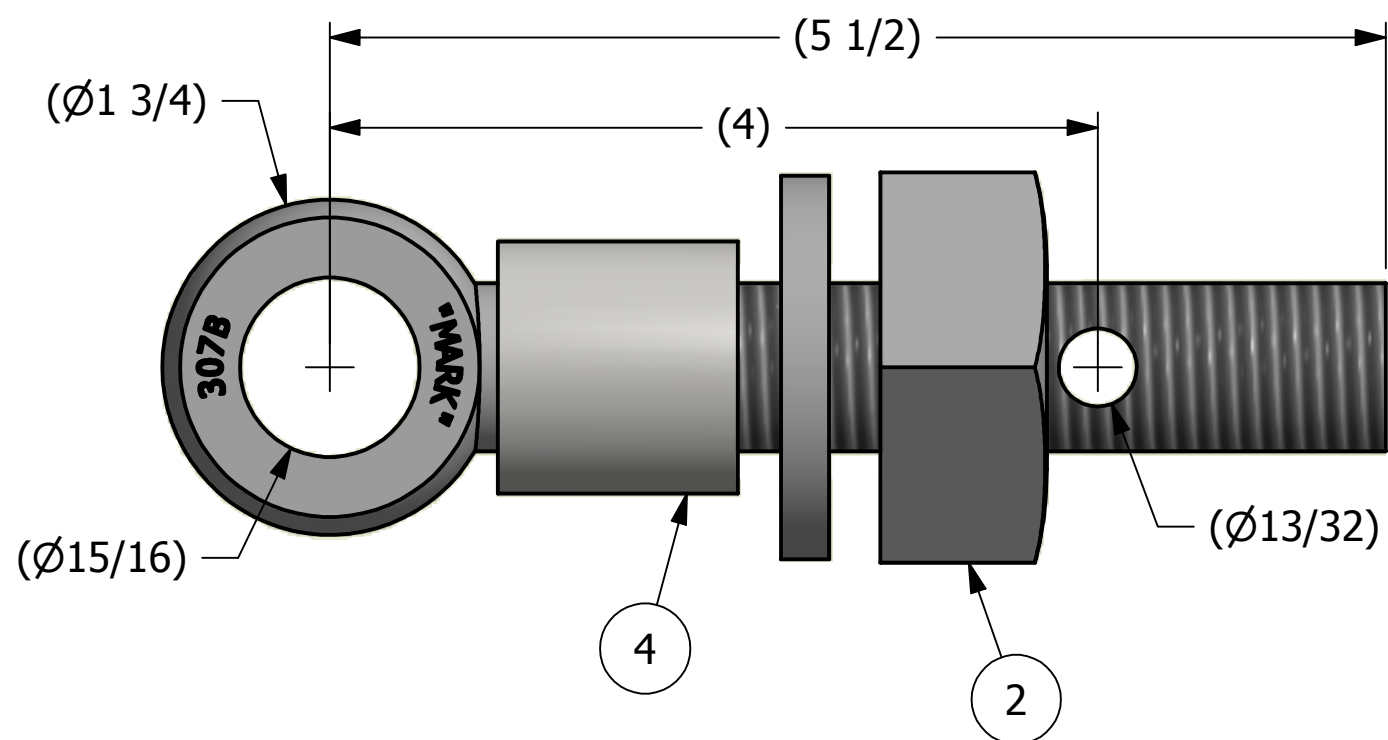
NO.	PART NAME	PART#	REQ'D	MATERIAL
1	EYEBOLT 7/8"X5 1/2"	EBR7855H2	1	CARBON STEEL
2	HEAVY SQUARE NUT 7/8"-9	N78	1	CARBON STEEL
3	FLAT WASHER 7/8"	WASH78T	1	CARBON STEEL
4	SAFETY COLLAR 1"	COLLAR1	1	CARBON STEEL



APPLY A BEAD OF WELD TO THE TWO END THREADS AFTER INSTALLING WASHER, NUT AND COLLAR.



ISOMETRIC VIEW



REV	BY	DATE	DESCRIPTION
B	GS	2-21-13	REPLACED EBR7855HR W/ EBR7855H2 REMOVED A16204
A	CHL	1-3-08	NEW PART ADDED TO THE SYSTEM

UNLESS OTHERWISE SPECIFIED DIMENSIONAL TOLERANCES	DRAWN BY:	CHL
FRACTIONAL: ±1/16	CHECKED BY:	PJG
X.XX: ±.03	PROTOTYPE BY:	CHL
X.XXX: ±.015	PROTOTYPE DATE:	5/16/2007
ANGULAR: ±1°	APPROVED FOR PRODUCTION BY:	PJG
THIS PRINT, PROPERTY OF SALCO PRODUCTS INC., CONTAINS PROPRIETARY INFORMATION AND MUST NOT BE COPIED, REPRODUCED, OR USED DETRIMENTALLY TO OUR INTEREST.	PRODUCTION DATE:	1/3/2008
THIRD ANGLE PROJECTION		

SALCO PRODUCTS, INC.

PART NAME: **EYEBOLT ASSEMBLY 7/8"X5 1/2"**

MATERIAL: **SEE BOM**

PROJECT #: **WAG0428** SHEET #: **1 OF 1** SCALE: **1:1**

DRAWING #: **B23580** PART #: **EB7855HAC**

