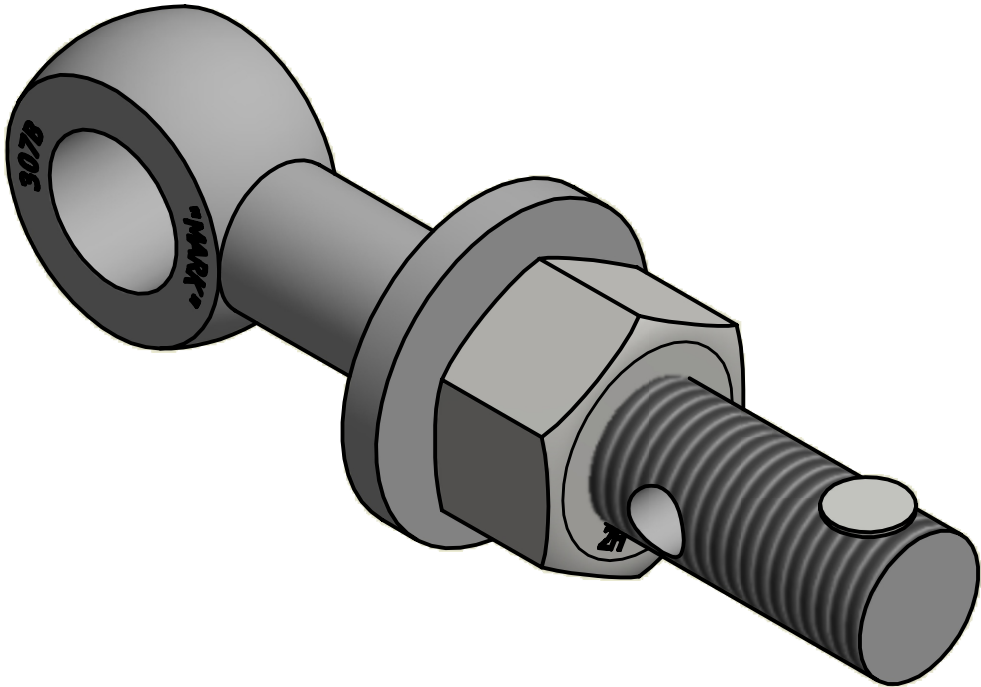
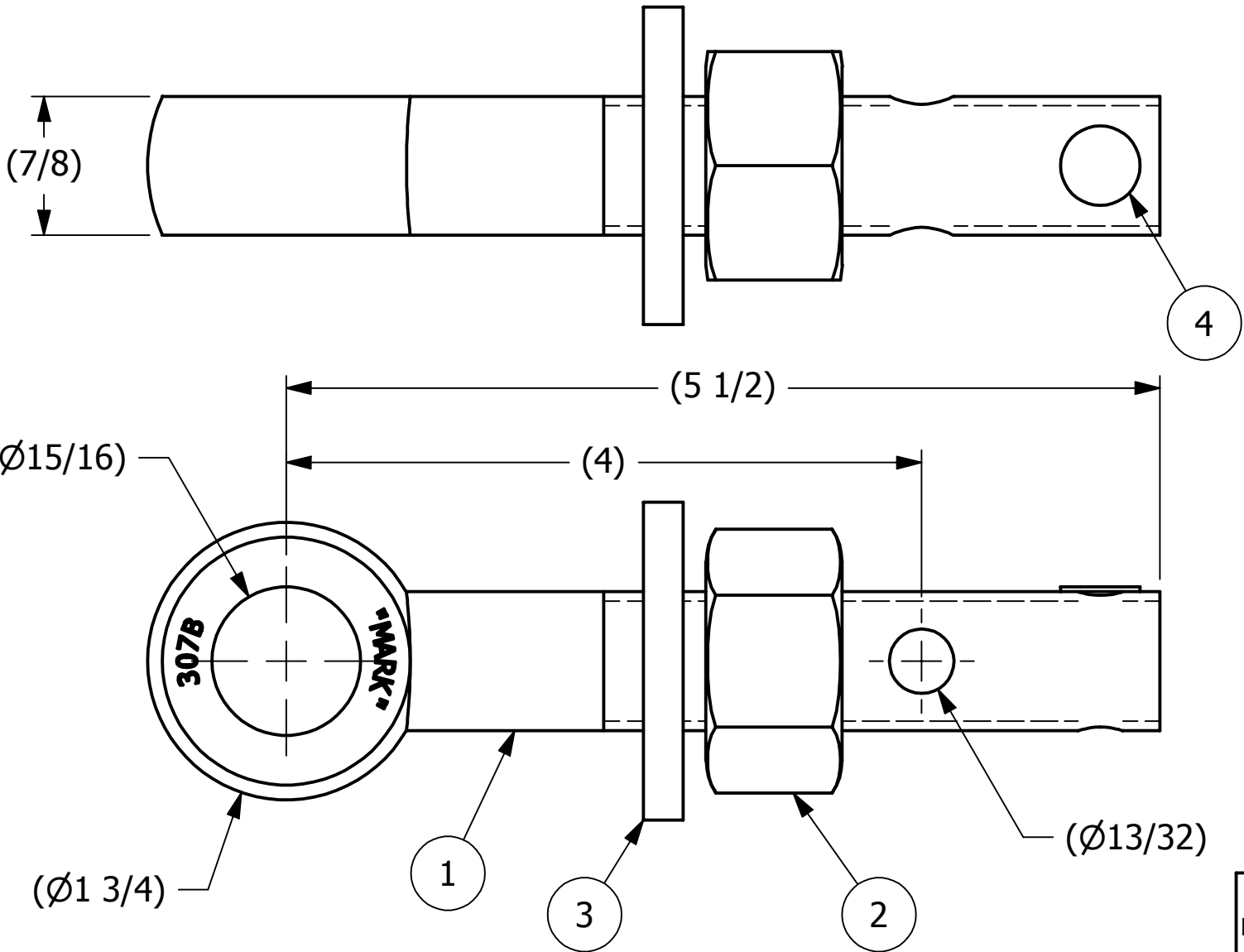
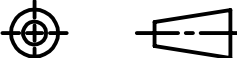



NO.	PART NAME	PART #	REQ'D	MATERIAL
1	EYEBOLT 7/8"X5 1/2"	EBR7855HR	1	CARBON STEEL
2	HEAVY HEX NUT 7/8"-9	N78X	1	CARBON STEEL
3	FLAT WASHER 7/8"	WASH78T	1	CARBON STEEL
4	HUCK RIVET 1/4"X13/16"	A16204	1	304 SS



ISOMETRIC VIEW

D	JJK	4-16-14	UPDATED EYEBOLT OD
C	CHL	6-10-02	CHANGED MATERIAL WASH78T FROM CS Z/P
B	CHL	11-26-01	REPLACED SN14S W/ A16204
A	FOD	8-5-99	UPDATED BOM, ITEM #1 WAS EB7855HR
REV	BY	DATE	DESCRIPTION

UNLESS OTHERWISE SPECIFIED DIMENSIONAL TOLERANCES FRACTIONAL: ±1/16 X.XX: ±.03 X.XXX: ±.015 ANGULAR: ±1° DEBURR ALL SHARP EDGES. ALL MACHINED SURFACES TO HAVE A 125 RMS FINISH UNLESS NOTED OTHERWISE. THIRD ANGLE PROJECTION <div></div>	DRAWN BY:	FOD	<div> SALCO PRODUCTS, INC.</div>		
	CHECKED BY:	SAB			
	PROTOTYPE BY:	FOD	PART NAME: EYEBOLT ASSEMBLY 7/8"X5 1/2"		
	PROTOTYPE DATE:	5/26/1999	MATERIAL: SEE BOM		
	APPROVED FOR PRODUCTION BY:	SAB	PROJECT #:		SHEET #: 1 OF 1
PRODUCTION DATE:	5/26/1999	DRAWING #: B13485		PART #: EB7855XHA	