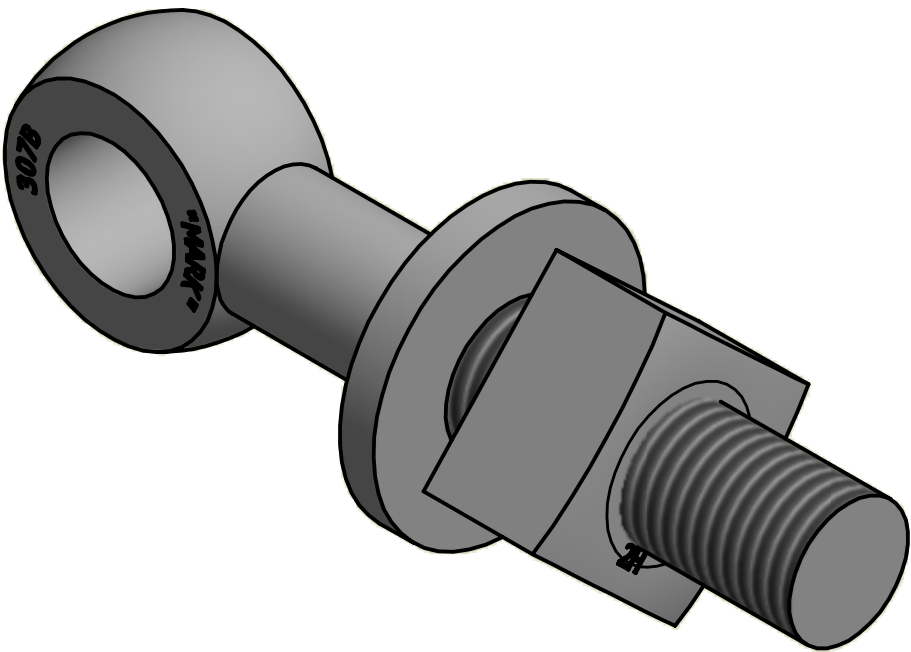
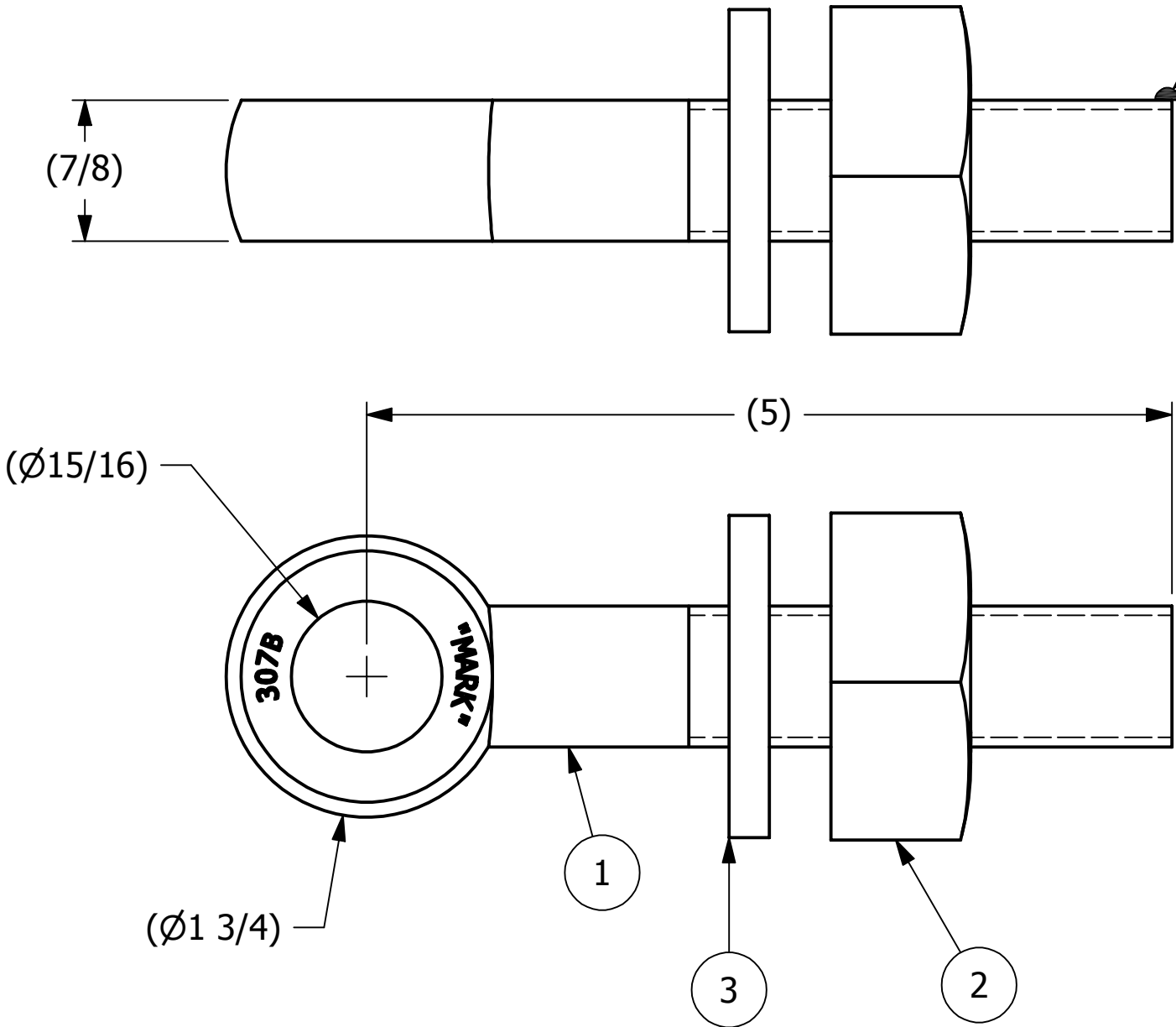


NO.	PART NAME	PART #	REQ'D	MATERIAL
1	EYEBOLT 7/8"X5"	EBR785	1	CARBON STEEL
2	HEAVY SQUARE NUT 7/8"-9	N78	1	CARBON STEEL
3	FLAT WASHER 7/8"	WASH78T	1	CARBON STEEL

APPLY A BEAD OF WELD TO THE TWO END
THREADS AFTER INSTALLING WASHER AND NUT.



ISOMETRIC VIEW



C	JJK	4-16-14	UPDATED EYEBOLT OD
B	CHL	6-10-02	CHANGED MATERIAL WASH78T WAS CS Z/P
A	FOD	8-5-99	UPDATED BOM, ITEM #1 WAS EB785
REV	BY	DATE	DESCRIPTION

UNLESS OTHERWISE SPECIFIED DIMENSIONAL TOLERANCES FRACTIONAL: $\pm 1/16$ X.XX: $\pm .03$ X.XXX: $\pm .015$ ANGULAR: $\pm 1^\circ$ DEBURR ALL SHARP EDGES. ALL MACHINED SURFACES TO HAVE A 125 RMS FINISH UNLESS NOTED OTHERWISE. THIRD ANGLE PROJECTION	DRAWN BY:	FOD
	CHECKED BY:	SAB
	PROTOTYPE BY:	FOD
	PROTOTYPE DATE:	5/27/1999
	APPROVED FOR PRODUCTION BY:	SAB
	PRODUCTION DATE:	5/27/1999



PART NAME:
EYEBOLT ASSEMBLY 7/8"X5"

MATERIAL: SEE BOM

PROJECT #: SHEET #: 1 OF 1 SCALE: 1:1

DRAWING #: B13486 PART #: EB785A