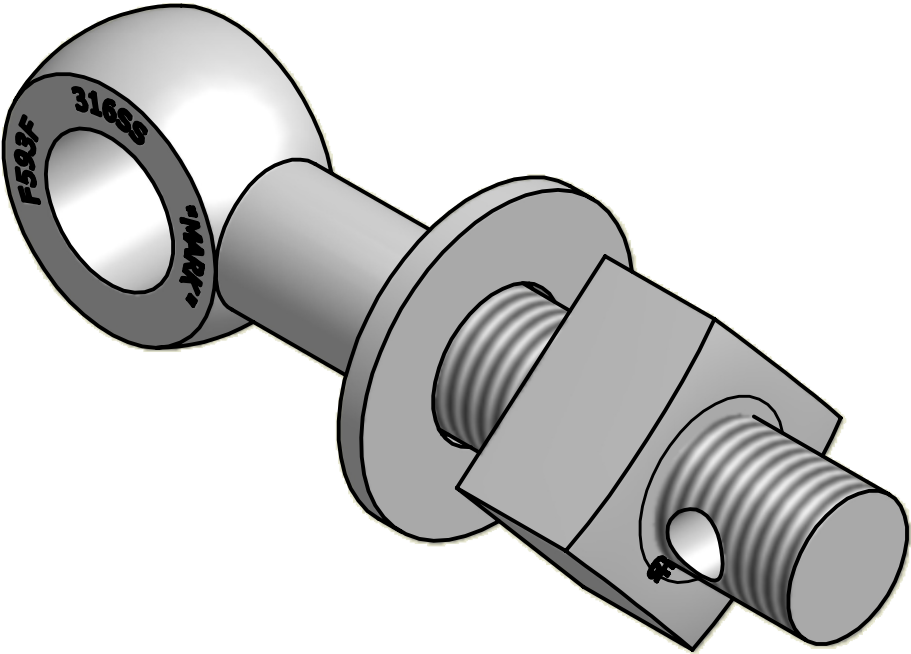
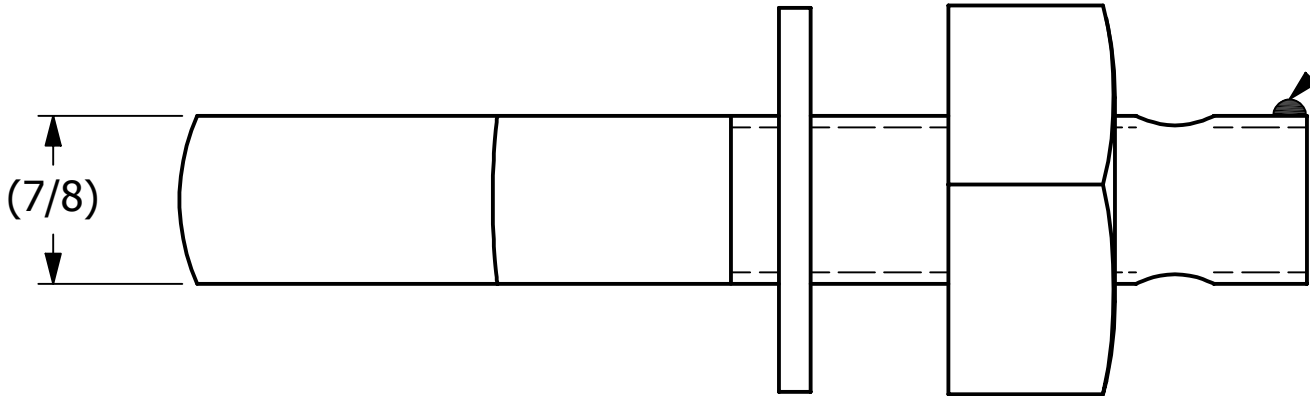
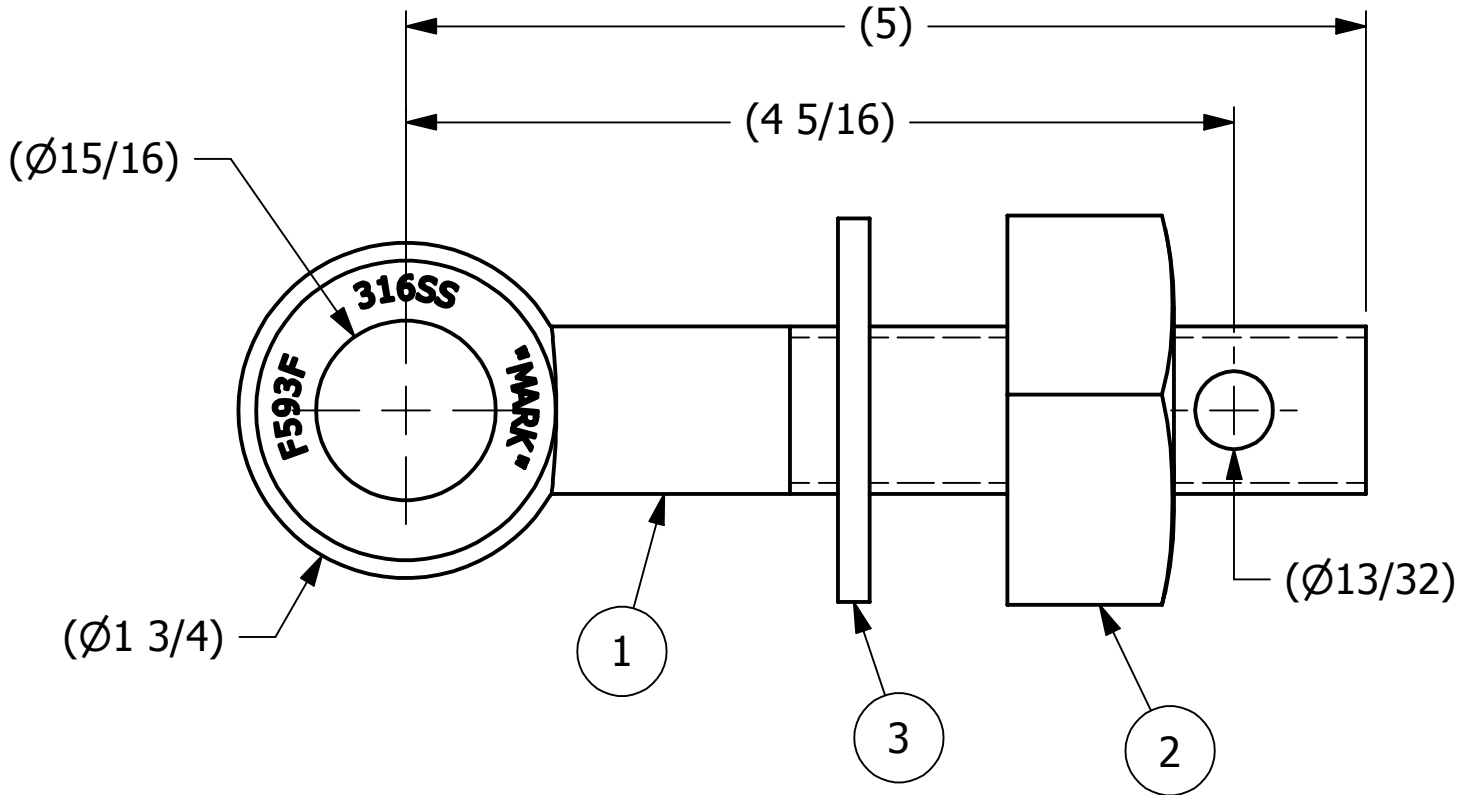


2		1		
NO.	PART NAME	PART #	REQ'D	MATERIAL
1	EYEBOLT 7/8"X5"	EBR785HS6	1	316 SS
2	HEAVY SQUARE NUT 7/8"-9	N78S6	1	416 SS
3	FLAT WASHER 7/8" SAE	WASH78S6	1	316 SS

APPLY A BEAD OF WELD TO THE TWO END
THREADS AFTER INSTALLING WASHER AND NUT.



ISOMETRIC VIEW



B	CHL	5-31-05	REPLACED RIVET WITH WEL STOP & REPLACED EBR785HS6R W/ EBR785HS6
A	CHL	11-26-01	REPLACED SN14S W/ A16204
REV	BY	DATE	DESCRIPTION

UNLESS OTHERWISE SPECIFIED DIMENSIONAL TOLERANCES FRACTIONAL: ±1/16 X.XX: ±.03 X.XXX: ±.015 ANGULAR: ±1° DEBURR ALL SHARP EDGES. ALL MACHINED SURFACES TO HAVE A 125 RMS FINISH UNLESS NOTED OTHERWISE. THIRD ANGLE PROJECTION	DRAWN BY:	FOD
	CHECKED BY:	SAB
	PROTOTYPE BY:	FOD
	PROTOTYPE DATE:	5/27/1999
	APPROVED FOR PRODUCTION BY:	SAB
	PRODUCTION DATE:	5/27/1999

PART NAME: EYEBOLT ASSEMBLY 7/8"X5"		
MATERIAL: SEE BOM		
PROJECT #:	SHEET #: 1 OF 1	SCALE: 1:1
DRAWING #: B13489	PART #: EB785HAS6	