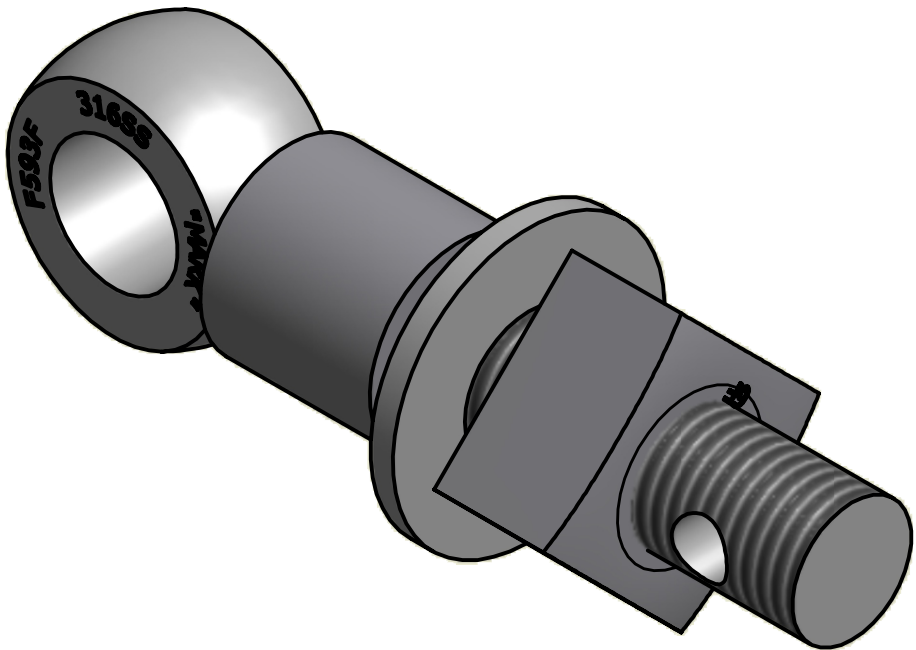




NO.	PART NAME	PART#	REQ'D	MATERIAL
1	HEAVY SQUARE NUT 7/8"-9	N78S6	1	416 SS
2	FLAT WASHER 7/8" SAE	WASH78S6	1	316 SS
3	SAFETY COLLAR 1 1/4"	COLLAR1S6	1	316 SS
4	EYEBOLT 7/8"X5"	EBR785HS6	1	316 SS



ISOMETRIC VIEW

C	KHK	2-7-13	REPLACED N78XS6S WITH N78S6 UPDATED TITLEBLOCK
B	BRG	6-11-08	REPLACED COLLAR1S4 W/COLLAR1S6 & REMOVED A16204
A	CHL	11-26-01	REPLACED SN14S W/A16204
REV	BY	DATE	DESCRIPTION

UNLESS OTHERWISE SPECIFIED DIMENSIONAL TOLERANCES FRACTIONAL: ±1/16 X.XX: ±.03 X.XXX: ±.015 ANGULAR: ±1° DEBURR ALL SHARP EDGES. ALL MACHINED SURFACES TO HAVE A 125 RMS FINISH UNLESS NOTED OTHERWISE. THIRD ANGLE PROJECTION	DRAWN BY:	TJN	 <b>SALCO PRODUCTS, INC.</b>	
	CHECKED BY:			
	PROTOTYPE BY:	TJN	PART NAME: <b>EYEBOLT ASSEMBLY 7/8"X6"</b>	
	PROTOTYPE DATE:	2/17/1993	MATERIAL: <b>SEE BOM</b>	
	APPROVED FOR PRODUCTION BY:	TJN	PROJECT #:	SHEET #: 1 OF 1
	PRODUCTION DATE:	2/17/1993	DRAWING #: <b>B5385</b>	PART #: <b>EB785HAS6C</b>

THIS PRINT, PROPERTY OF SALCO PRODUCTS INC., CONTAINS PROPRIETARY INFORMATION  
AND MUST NOT BE COPIED, REPRODUCED, OR USED DETRIMENTALLY TO OUR INTEREST.